

CTC

Cable Termination Components

CTC
10 YEARS
2009 - 2019



WIRING & COMPONENT ACCESSORIES CATALOGUE

ISSUE X



Cable Termination Components Ltd was founded in 2009 by Directors/Owners Chris Harris and Andy Bell and therefore they are celebrating their 10th year anniversary as a business.

From a standing start Chris and Andy have grown the business to be one of the UK's premier Cable Termination Suppliers. Their main focus for the business has always been about putting the customer needs first and despite their ever-growing success this remains their main motivation.

On behalf of the Directors we would like to thank all of our customers for their support and look forward to working side by side with you going forward.

CTC Cable Termination Components supply an extensive range of products suitable for most electrical applications. Whether you need a few bags of Pre-Insulated Terminals or a 10-400mm Hand Hydraulic Crimper, we have everything you need.

Based in Stonehouse, Gloucestershire, just off Junction 13 of the M5 Motorway, we are ideally placed to serve the M5 & M4 corridors and can easily branch out into the rest of the UK.

See page 5 for details of Terms & Deliveries.

We actively support UK businesses by supplying products manufactured in the UK where possible.

Look for the label.



**MANUFACTURED
IN THE UK**

CTC

T: 01453 821798 F: 01453 823736 E: sales@ctcukltd.co.uk

CONTENTS

CABLE TERMINATIONS

Pre-insulated Terminals	6-7
Insulated Bootlace Ferrules	8
Twin Entry Insulated Bootlace Ferrules	8
Uninsulated Bootlace Ferrules	9
Din Rail Terminals	9
Relays	10
Contactors & Timer	10
Emergency Push Buttons	10
Rotary Isolators	11
Stand Alone Modular RCD	12
RCD Sockets and Spurs	12
Surge Protection	13
Cable Markers	14
Neoprene Sleeves	15
Warning Labels	16
Quick Fit Connectors	17
Piano Connectors	17
MC4 Connectors	17
MC3 Connectors	17
Gel Crimps	17
Copper Tube Terminals	18-19
Heavy Duty Copper Tube Terminals	20-21
Reduced Palm Tube Terminals	22
Copper Butt Splices	22
Copper Transformer Fixing Terminals	23
Copper Reducing Pins	23
Copper Tube Terminals – Specials	24
Mechanical Connectors	24

TOOLING

Crimping Tools	25-26
Boot Lace Ferrule Crimpers	26
Cable Tie Guns	27
Cable Cutters	27
Conduit Cutters	28
Wire Strippers	28
Threaded Rod Cutter	28

Folding Sack Truck	28
Lockout Kit	29
Electrician's Tools & Toolkit	29
Holesaws	30
Ladders	31
Raaco Boxes	31
Kits & Kit Boxes	32-34

CABLE FIXINGS

Plastic Cable Ties	35-36
Plastic Cable Tie Accessories	36-37
Metal Cable Ties	37
Cable Cleats	38
Aluminium Cable Cleats	39
Trefoil Aluminium Cable Cleats	40
Cable Clips	41
Zip-Lock	41
Girder Clips	42-43
Fixings	44

CABLE JOINTING

Resin Cable Joints	45
ISO GEL	46
Plastic Enclosures	47-48
Plugs, Couplers, Sockets, Splitters & Isolators	49-52

INSULATION

Heatshrink Sleeves	53-54
Insulation Sleeving	54

CABLE MANAGEMENT

Spiral Wrap	55
Push Back Jacket	55
Grommet Strip	55
Flexible Conduit & Burial Conduit	56
Flexible Conduit Accessories	57
Cable Protectors	57
Cable Dispensers, Rotators & Rollers	58

CONTENTS continued

CABLE GLANDS & ACCESSORIES

Dome Top Glands / IP68	59
Entry Thread Washers	59
Serrated 'Shakeproof' Washers	59
Brass Cable Gland Packs	60
Consumer Unit Glands	61
Consumer Unit Tail Kit Glands	61
Cable Gland Sizing Charts	62-64
Brass Reducers	65
Brass Adaptors	65

FIRE SAFETY PRODUCTS

Fire Safe Clips to BS5839-1	66
316 Stainless Steel Cable Tie Base	66
Concrete Direct Screws	66
Fire Safe Fixing Kit	66
Metal Cable Ties	67
Fire Kit Box	67
Fire Safe P Clip Range	68

MICC PRODUCTS

MICC Accessories	69
MICC Tooling	69

EARTHING COMPONENTS & ACCESSORIES

CTC Earth Bars	70
Earthing Accessories	70-71

TAPES, SEALANTS, LUBRICANTS & AEROSOLS

Tapes	72
Wipes, Sealants, Adhesives	73
Aerosols	74
Rubber Matting	74

MISCELLANEOUS

Cable Installation	75
Inspection Cameras	75
Transformers	75
HDMI Leads & TV Connectors	75
Extension Leads	75
Health & Safety	76

CTC PROFILES

CTC Profiles	77-82
--------------	-------

Terms & Deliveries

MINIMUM ORDERS

We have no minimum order.

DISPATCH

Orders can be dispatched up until 4.00pm for next day delivery (provided items are in stock).

CARRIAGE

Carriage is chargeable on all orders below a nett value of £100.00 to mainland UK.

RETURNS

Goods correctly supplied will not be accepted for return without the prior agreement of CTC and will be subject to a handling charge.

Please email accounts@ctcukltd.co.uk for returns authorisation number. Any goods returned without this number will be refused.

PRICES

Any prices quoted are subject to value added tax at the appropriate rate.

HIRE TOOLING

We can offer a range of hire tools including hand and foot operated crimping tools, hydraulic cable cutters and cable drum jacks. Dispatch and collection of hire equipment is included in the hire charge. P.O.A.

WEIGHTS AND MEASUREMENTS

All weights and measurements are subject to a+/- tolerance of 10%.



CALL

01453 821798



EMAIL

sales@ctcukltd



FAX

01453 823736

Free UK mainland delivery on orders over £100.

CABLE TERMINATIONS

Pre-Insulated Terminals

Most terminals are UL and ROHS compliant.

Max working temperature +75°C.

RING TERMINALS

Part Number (0.5-1.5 RED)	Part Number (1.5-2.5 BLUE)	Part Number (4.0-6.0 YELLOW)
RIR32	BIR32	YIR32
RIR37	BIR37	YIR37
RIR43	BIR43	YIR43
RIR53	BIR53	YIR53
RIR65	BIR65	YIR65
RIR85	BIR85	YIR85
RIR10	BIR10	YIR10



FORK TERMINALS

Part Number (0.5-1.5 RED)	Part Number (1.5-2.5 BLUE)	Part Number (4.0-6.0 YELLOW)
RIF32	BIF32	YIF32
RIF37	BIF37	YIF37
RIF43	BIF43	YIF43
RIF53	BIF53	YIF53
RIF65	BIF65	YIF65



INSULATED SPLICES

Part Number (0.5-1.5 RED)	Part Number (1.5-2.5 BLUE)	Part Number (4.0-6.0 YELLOW)
RIBS	BIBS	YIBS
Heatshrink Splice	Heatshrink Splice	Heatshrink Splice
RIBS/HS	BIBS/HS	YIBS/HS



INSULATED PINS/BLADES

Part Number (0.5-1.5 RED)	Part Number (1.5-2.5 BLUE)	Part Number (4.0-6.0 YELLOW)
RIP12	BIP12	YIP14
RIB10	BIB10	YIB10
RIB18	BIB18	YIB18



INSULATED BULLETS

Part Number (0.5-1.5 RED)	Part Number (1.5-2.5 BLUE)	Part Number (4.0-6.0 YELLOW)
RIBM4	BIBM4	YIBM5
RISF4	BISF4	YISF5



Pre-Insulated Terminals continued

FEMALE INSULATED PUSH-ONS

Part Number (0.5-1.5 RED)	Part Number (1.5-2.5 BLUE)	Part Number (4.0-6.0 YELLOW)
RIFPX28	BIFP48	YIFP63
RIFP28	BIFP63	YIFP95
RIFPX48		
RIFP48		
RIFP63		



MALE INSULATED PUSH-ONS

Part Number (0.5-1.5 RED)	Part Number (1.5-2.5 BLUE)	Part Number (4.0-6.0 YELLOW)
RIMP63	BIMP63	YIMP63



FULLY INSULATED FEMALE PUSH-ONS

Part Number (0.5-1.5 RED)	Part Number (1.5-2.5 BLUE)	Part Number (4.0-6.0 YELLOW)
RIFPT28	BIFPT48	YIFPT63
RIFPT48	BIFPT63	
RIFPT63		



INSULATED PIGGY BACK TERMINALS

Part Number (0.5-1.5 RED)	Part Number (1.5-2.5 BLUE)	Part Number (4.0-6.0 YELLOW)
RIPIG63	BIPIG63	YIPIG63



INSULATED HOOK BLADES

Part Number (0.5-1.5 RED)	Part Number (1.5-2.5 BLUE)	Part Number (4.0-6.0 YELLOW)
RIHB30	BIHB30	YIHB46
RIHB46	BIHB46	



CLOSED END CONNECTORS

Part Number (1.5)	Part Number (2.5)	Part Number (6.0)
NES15	NES25	NES60



INSULATED RIGHT ANGLE FEMALE CONNECTORS

Part Number (0.5-1.5 RED)	Part Number (1.5-2.5 BLUE)
RIFPT63RA	BIFPT63RA



Insulated Bootlace Ferrules

French and German insulated Bootlace Ferrules are suitable for tri-rated cables and are in accordance with DIN 46288 Part 4, temperature range -40° up to 125°C.

We can also offer a full range of long pin bootlace ferrules, uninsulated bootlace ferrules and tooling to suit.



Part Number French	Colour French	Part Number German	Colour German	Pin Length (mm)	Overall Length
T0.25BLF	VIOLET	K0.25BLF	L/BLUE	6.0	10.4
T0.34BLF	PINK	K0.34BLF	TURQUOISE	6.0	10.4
T0.50BLF	WHITE	K0.50BLF	ORANGE	8.0	14.0
T0.75BLF	BLUE	K0.75BLF	WHITE	8.0	14.6
T1.0BLF	RED	K1.0BLF	YELLOW	8.0	14.6
T1.5BLF	BLACK	K1.5BLF	RED	8.0	14.6
T2.5BLF	GREY	K2.5BLF	BLUE	8.0	15.2
T4.0BLF	ORANGE	K4.0BLF	GREY	9.0	16.5
T6.0BLF	GREEN	K6.0BLF	BLACK	12.0	20.0
T10.0BLF	BROWN	K10.0BLF	IVORY	12.0	21.5
T16.0BLF	IVORY	K16.0BLF	GREEN	12.0	22.2
T25.0BLF	BLACK	K25.0BLF	BROWN	16.0	29.0
T35.0BLF	RED	K35.0BLF	BEIGE	16.2	30.0
T50.0BLF	BLUE	K50.0BLF	OLIVE	19.0	36.0
T70.0BLF	YELLOW	K70.0BLF	YELLOW	20.0	37.0
T95.0BLF	RED	K95.0BLF	RED	25.0	44.0
T120BLF	BLUE	K120BLF	BLUE	27.0	48.0

Twin Entry Insulated Bootlace Ferrules

Part Number	Colour	Pin Length (mm)	Overall Length
2 X 0.50BLF	WHITE	8.0	15.0
2 X 0.75BLF	BLUE	8.0	15.0
2 X 1.0BLF	RED	8.0	15.0
2 X 1.5BLF	BLACK	8.0	16.0
2 X 2.5BLF	GREY	13.0	18.5
2 X 4.0BLF	GREY	12.0	23.0
2 X 6.0BLF	YELLOW	14.0	26.0
2 X 10.0BLF	RED	14.0	26.0
2 X 16.0BLF	BLUE	14.0	30.0

CABLE TERMINATIONS continued

Uninsulated Bootlace Ferrules

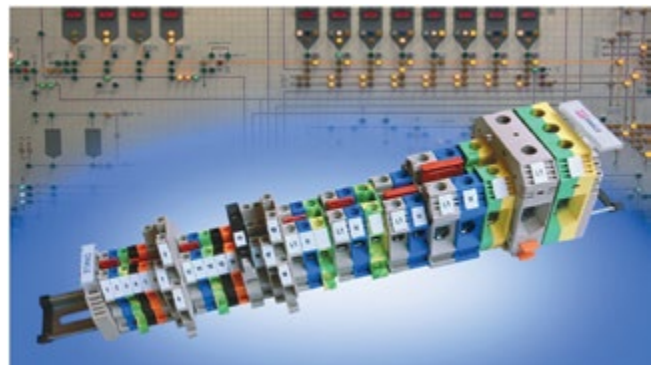
Part Number	Size (mm)	Part Number	Size (mm)
UBLF0.5	0.5	UBLF6.0	6.0
UBLF0.75	0.75	UBLF10.0	10.0
UBLF1.0	1.0	UBLF16	16.0
UBLF1.5	1.5	UBLF25	25.0
UBLF2.5	2.5	UBLF35	35.0
UBLF4.0	4.0	UBLF50	50.0



Din Rail Terminals

Terminals supplied in packs of 100.

Part Number	Description
CDK2.5N	Din Terminals 2.5mm Grey
CDK4N	Din Terminals 4.0mm Grey
CDK6N	Din Terminals 6.0mm Grey
CDK10N	Din Terminals 10.0mm Grey
CDK16N	Din Terminals 16.0mm Grey
CDK35N	Din Terminals 35.0mm Grey
CDK50N	Din Terminals 50mm Grey
CDK95N	Din Terminals 95mm Grey
CDK150N	Din Terminals 150mm Grey
CDK4NPE	Earth Terminals 4mm G/Y
CDK6NPE	Earth Terminals 6mm G/Y
CDK10NPE	Earth Terminals 10mm G/Y
CDK16NPE	Earth Terminals 16mm G/Y
CDK35NPE	Earth Terminals 35mm G/Y
CDK50NPE	Earth Terminals 50mm G/Y
CDK95NPE	Earth Terminals 95mm G/Y
CDK4NC	End Plate 2.5-4mm
CDK6NC	End Plate 6mm



Part Number	Description
CDK10NC	End Plate 10mm
CDK16NC	End Plate 16mm
CSS4	Din Rail End Brackets
CTM26BLANK	Markers Strip 10
CDK4NBLU	Din Terminals Neutral Blue 4.0mm
CDKNSPS001	Din Rail Partition Spacer
CDSS2.5N-06P	Jumper Bars 2.5mm
CDSS4N-06P	Jumper Bars 4mm
CDSS6N-06P	Jumper Bars 6mm
CDSS10N-03P	Jumper Bars 10mm
CTS35DINRAIL	Din Rail 2 Metre

Din Rail Trade Counter Blister Packs

Part Number	Description
CTB01C	Din Terminals 10x2.5mm Grey & 10 Markers – Pack
CTB02C	Din Terminals 10x4.0mm Grey & 10 Markers – Pack
CTB03C	Din Terminals 5x10mm Grey & 10 Markers – Pack
CTB06C	Din Rail Accessory Pack

Part Number	Description
CTB08C	Din Terminals 3x4mm Blue
CTB09C	Din Terminals Earth 5x4mm – Pack
CTB10C	Din Terminals 3x16mm
CT-JUMPER	Jumper Bars 10 off 2.5 & 4mm – Pack

Relays

Part Number	Description
CTB01C	Din Terminals 10x2.5mm Grey & 10 Markers
CTB02C	Din Terminals 10x4.0mm Grey & 10 Markers
CTB03C	Din Terminals 5x10mm Grey & 10 Markers
CTB06C	Din Rail Accessory Pack
CTB09C	Din Terminals Earth 5x4mm
CT-JUMPER	Jumper Bars 10 off 2.5 & 4mm
CTRL01C	Relay 10amp 230vac 8pin
CTRL02C	Relay 10amp 230vac 11pin
CTRL05C	Relay 10amp 24vac 8pin
CTRL06C	Relay 10amp 24vdc 8pin
CTRL07C	Relay 10amp 24vac 11pin
CTRL08C	Relay 10amp 24vdc 11pin
CTRL09C	Relay 10amp 12vdc 8pin
CTRL11C	Relay 10amp 240vac 14pin
CTBA01C	Relay Base 8pin
CTBA02C	Relay Base 11pin
CTBA03C	Relay Base 14pin



Contactors

Part Number	Description
CTCR40C	20amp 2 pole 240v ac
CTCR41C	25amp 4 pole 240v ac
CTCR44C	40amp 2 pole 240v ac
CTCR42C	40amp 4 pole 240v ac

Timer

CTM34C MULTI-FUNCTION TIMER

10-240c ac/dc
din mounted



Emergency Push Buttons

Part Number	Description
CTES-TR	Emergency Pushbutton station twist release
CTES-KR	Emergency Pushbutton station key release



CTC Industrial Rotary Isolators Range

NEW



NEW LARGE ENCLOSURE
20amp and 32amp available

- Weatherproof to IP65
- Easy installation
- Multiple M20/M25 knockouts up to 63 amp top and bottom
- M25/M32 knockouts up to 100amp top and bottom
- Can be locked in the off position using a padlock (not supplied)
- Earth and Neutral terminals are included
- Captive retained cover screws
- Conforms to IEC 60947-3

Part No.	Amp	Pole	Voltage	Enclosure Size
RI-20A-4P	20	4	415V	125x100x120mm
RI-32A-4P	32	4	415V	125x100x120mm
RI-40A-4P	40	4	415V	175X114X135mm
RI-20A-4PL	20	4	415V	175x114x135mm
RI-32A-4PL	32	4	415V	175x114x135mm
RI-63A-4P	63	4	415V	175x114x135mm
RI-100A-4P	100	4	415V	240x160x165mm

Insulated IP65 3 Position Change Over switches available to order upon request in 20, 32, 40, 63, 80 & 100 Amp AC21

Stand Alone Modular RCD

Part Number	Description
CRCD25/2/30	25A 30MA 2POLE RCD
CRCD25/4/30	25A 30MA 4POLE RCD
CRCD40/2/30	40A 30MA 2POLE RCD
CRCD40/4/30	40A 30MA 4POLE RCD
CRCD63/2/30	63A 30MA 2POLE RCD
CRCD63/4/30	63A 30MA 4POLE RCD
CRCD80/2/30	80A 30MA 2POLE RCD
CRCD80/4/100TD	80A 100MA 4POLE RCD TIME DELAY
CRCD100/4/100	100A 100MA 4POLE RCD



RCD Socket Range

Part Number	Description
CTRCD2GSKT	2 GANG RCD SOCKET UNSW WHI
CTRCD2GSKT/MET	2 GANG METAL RCD SOCKET UNSW
CTRCD1GSKT	1 GANG RCD SOCKET WHITE
CTRCD1GSKT/MET	1 GANG RCD SOCKET METAL
CTRCD2GSWSKT	2 GANG SWITCHED RCD WHI SOCKET
CTRCD2GSW/MET	2 GANG SWITCHED RCD MET SOCKET
CTRCDSPUR	SWITCHED SPUR RCD WHITE



Control Products

CTFS6380100 KMF METAL CLAD SWITCH FUSE

c/w 100 , 80 and 63
amp Fuses



CTC100 CENTRAL HEATING WIRING CENTRE



Surge Protection Devices

COMING SOON!



Brand new product from CTC

Please email your enquiries to sales@ctcukltd.co.uk and let our surge suppression support team take the stress of choosing the right device.

CABLE TERMINATIONS continued

Cable Markers

A cable identification system, offering a huge range of cable sizes that can be identified with a simple marker. Its chevron cut ensures easy and accurate alignment, the expanding gusset feature offers easy fitting. Ideal for cables from 0.2mm² to 70.0mm². Supplied loose in boxes.

Applications include general panel building, mass transit, telecoms and utilities. Available in Black on White, Black on Yellow, Black on Red or Colour Coded.

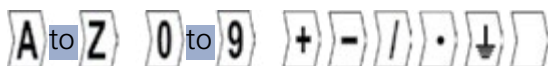
Made of Self-Extinguishing PVC with a Service Temperature Rating of -45°C to +70°C.

Resistant to petrol, industrial diesel, 10% sodium chloride, cutting oil, gear oil, aircraft fuel, abrasion, gamma and UV radiation.



AVAILABLE MARKS

All sizes (B/W)
Black on White



EL1/3 (B/Y)
Black on Yellow



EL1/3 (B/R)
Black on Red



EL02/3B, EL1/3B, EL2/4B
0-9 (C/C) Colour Coded



Part Number (Boxes)	Cable Dia. (mm)	Cable Size* (mm ²)	Marker Length (mm)	Box Qty	Applicator Part No.
EL02/3B	1.4-2.8	0.2-1.0	3	1000	ELA 1
EL1/3B	2.8-5.0	0.75-6.0	3	1000	ELA 2
EL2/4B	4.0-10.0	2.5-16.0	4	500	ELA 3
EL3/6B**	8.0-16.0	16.0-70.0	6	200	ELA 4

* BS6004/BS6231

** Available in Black on White only.

HOW TO ORDER

- 1** Part No: EL02/3B
 - 2** Colour: B/W
 - 3** Letter/Number: A
- = EL02/3B B/W A



CALL
01453 821798



EMAIL
sales@ctcukltd



FAX
01453 823736

Free UK mainland delivery on orders over £100.

Neoprene Sleeves

Neoprene sleeves are made from highly elastic extruded Polychloroprene rubber, pre-lubricated as standard (CH12-CH25). They are particularly useful for binding the ends of braided mains leads into plugs and portable equipment. The sleeves can be stretched 5 times in fitting and 2 times in use. Neoprene sleeves are best applied using the expanding tools. Available in 12 colours for easy identification, diameters range from 1.2mm to 20mm. Custom lengths are available to order.



COLOUR OPTIONS: Black, Blue, Brown, Green, Grey, Orange, Pink, Red, Violet, White, Yellow, Green/Yellow.

MATERIAL: Polychloroprene Rubber Quality 3490

SERVICE TEMPERATURE RANGE: -30°C to +90°C

SHORT TIME TEMPERATURE: 110°C

SHORE HARDNESS A: 40 ± 5

TENSILE STRENGTH AT BREAK: >6.5 MPa

ULTIMATE ELONGATION: >500%

TEAR STRENGTH: 10kN/m

DIELECTRIC STRENGTH: 13 kv/mm

VOLUME RESISTIVITY: 4 x 10⁹ cm

FLAME RESISTANCE: V0 UL94

CHEMICAL RESISTANCE: Resistance to mineral and vegetable oils, aromatic fuels, acids and alkalis.

MATERIAL SPECIFICATION: BS3858 Type 1.



PRE-CUT LENGTHS

Part Number	Length (mm)	Internal Dia. (mm)	Max. OD of Cable (mm)	Pack Qty
H12x20 (COLOUR)	20	1.2	2.4	1000
H15x20 (COLOUR)	20	1.5	3.0	1000
H20x20 (COLOUR)	20	2.5	4.0	1000
H30x25 (COLOUR)	25	3.0	6.0	1000
H50x25 (COLOUR)	25	5.0	10.0	100
H75x25 (COLOUR)	25	7.5	15.0	100
H100x25 (COLOUR)	25	10.0	19.8	100
H150x25 (COLOUR)	25	15.0	30.0	100
H200x25 (COLOUR)	25	20.0	40.0	100

Warning Labels

Part Number	Description
DNSO8035	Label - Do Not Switch Off 80x35
TWOCOL7540	Label - Two Wiring Colours 75x40
DAN415V5020	Label - Danger 415v 50x20
DAN230V5020	Label - Danger 230v 50x20
DAN110V5020	Label - Danger 110v 50x20
DAN415V8035	Label - Danger 415v 80x35
DAN230V8035	Label - Danger 230v 80x35
DAN110V8035	Label - Danger 110v 80x35
DANLT8035	Label - Danger Live Terminals 80x35
WARISO8035	Label - Wiring ISO Elsewhere 80x35
DANBTWN8050	Label - Danger 415v Between 80x50
WARISORC8050	Label - Warning ISO Before Removing Colour 80x50
WARTRI7060	Label - Warning Triangle 70x60
DAN230VTRI	Label - Danger 230v Triangle 55x70
DAN415VTRI	Label - Danger 415v Triangle 55x70
MAINSW8035	Label - Main Switch 80x35
RCDTEST7540	Label - RCD Test 75x40
EARCON5070	Label - Earth Connection 50x70
PTPL500	Pat Test Pass Labels
PTFL500	Pat Test Fail Labels



DNSO8035



TWOCOL7540



DAN415V5020



DAN230V5020



DAN110V5020



DAN415V8035



DAN230V8035



DAN110V8035



DANLT8035



WARISO8035



DANBTWN8050



WARISORC8050



WARTRI7060



DAN230VTRI



DAN415VTRI



MAINSW8035



EARCON5070



PTPL500



RCDTEST7540

Other labels and signs available on request

CABLE TERMINATIONS continued

Quick Fit Connectors

A fast, easy and reliable way of connecting and distributing cable and conductors in housing electrics. Can be applied, tool free, by means of push-in spring technology. Transparent housing allows fast and easy optical examination. Different colours provide a comfortable identification of the different connectors. Solid stranded copper conductors can be used. Easy to use: Strip the cable approximately 11mm then insert completely into the connector. To change or correct a wire, hold and twist it alternating left and right while pulling the connector.

Part No.	Colour	No. of Conductors	Pack Contents
QFC2	Yellow	2	10
QFC3	Orange	3	10
QFC4	Clear	4	10
QFC5	Blue	5	10
QFC6	Violet	6	10
QFC8	Grey	8	10



Piano Connectors

Part No.	Description
CTCPKC-412	Piano Connectors 2 Way Lever
CTCPKC-413	Piano Connectors 3 Way Lever
CTCPKC-415	Piano Connectors 5 Way Lever



MC4 Connectors

MC4 MALE & FEMALE CONNECTORS

These MC4 male and female connectors are suitable for cable between 4-6mm.



MC4 BRANCH CONNECTORS

These MC4 male and female branch connectors are suitable for cable between 4-6mm.



The tried and tested design of these MC4 cable connectors enable snap-in locking and can only be released using an MC4 spanner, making these connectors safe and reliable. Suitable for use on cable with a cross section of 4-6mm².

Spec:

Cable Cross Section: 4-6mm²

Cable Outer Diameter: 5.5-9mm

Current Rating:

30A Voltage Rating: 1000V

(IEC/CEI), 600V (UL)

MC3 Connectors



These MC3 connectors are fully touch protected and allow for quick and easy on-site connection, lowering installation costs.

Suitable for use on cables with a cross section of 2.5-4mm² with an outer diameter of 4.9-7.1mm.

Gel Crimps

BT CRIMPS

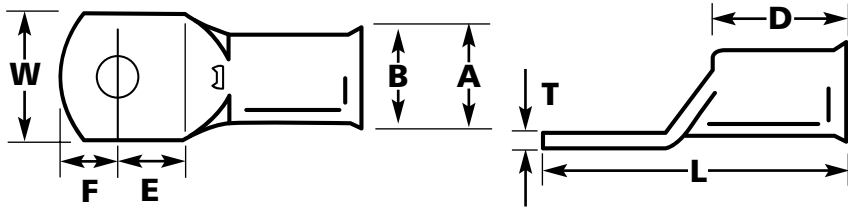
Gel filled moisture resistant connector.

UY2 – 2 way

UY3 – 3 way



Copper Tube Terminals



MANUFACTURED
IN THE UK

Part No.	Stud Size (mm)	A	B	W	E	F	D	L	T
1.5-3T	3	3.6	1.9	5.5	5.0	3.0	7.5	17.0	1.4
1.5-4T	4	3.6	1.9	6.7	6.0	4.0	7.5	19.5	1.1
1.5-5T	5	3.6	1.9	7.7	6.5	4.5	7.5	20.4	0.9
2.5-3T	3	3.9	2.4	5.5	5.0	3.0	7.8	18.0	1.6
2.5-4T	4	3.9	2.4	8.0	5.0	4.0	6.0	19.0	1.4
2.5-5T	5	3.9	2.4	10.0	6.2	4.5	6.0	21.2	1.1
2.5-6T	6	3.9	2.4	10.0	6.5	5.5	6.0	21.0	1.0
4-4T	4	4.7	3.0	10.0	6.0	5.0	8.0	21.0	1.7
4-5T	5	4.7	3.0	10.0	7.0	5.5	8.0	21.0	1.4
4-6T	6	4.7	3.0	10.0	7.0	6.0	8.0	23.5	1.3
6-4T	4	6.0	4.1	9.5	6.0	4.0	8.5	21.5	2.0
6-5T	5	6.0	4.1	10.0	6.4	5.5	8.5	24.5	1.9
6-6T	6	6.0	4.1	11.0	6.5	5.5	8.5	24.5	1.7
6-8T	8	6.0	4.1	12.5	8.5	7.0	8.5	27.0	1.6
6-10T	10	6.0	4.1	12.5	9.3	7.7	8.5	27.0	0.9
10-5T	5	6.6	4.7	10.8	5.6	5.2	8.0	26.0	1.7
10-6T	6	6.6	4.7	10.8	5.6	5.2	8.0	26.0	1.7
10-8T	8	6.6	4.7	13.5	8.0	7.0	9.5	29.5	1.2
10-10T	10	6.9	4.7	16.0	12.0	10.0	10.0	39.0	1.5
10-12T	12	6.9	4.7	18.0	12.0	10.0	10.0	39.0	1.2
16-6T	6	7.5	5.5	10.8	8.8	6.2	9.5	30.0	2.0
16-8T	8	7.5	5.5	13.5	8.0	7.0	9.5	30.0	1.6
16-10T	10	7.8	5.5	15.0	10.9	9.6	9.5	35.5	1.5
16-12T	12	8.0	5.5	18.0	12.0	10.0	11.0	43.0	1.3
25-6T	6	9.4	7.0	13.8	8.8	6.2	12.0	32.5	2.4
25-8T	8	9.4	7.0	13.8	8.0	7.0	12.0	32.5	2.4
25-10T	10	9.4	7.0	16.0	10.9	9.6	12.0	38.0	2.1
25-12T	12	9.4	7.0	18.0	10.5	10.0	12.0	38.0	1.9
35-6T	6	10.6	8.2	15.3	8.8	6.2	14.0	35.0	2.4
35-8T	8	10.6	8.2	15.3	8.0	7.0	14.0	35.0	2.4
35-10T	10	10.6	8.2	15.3	10.9	9.6	14.0	40.5	2.4
35-12T	12	10.6	8.2	18.0	10.5	10.0	14.0	40.5	2.2
50-6T	6	11.9	9.5	17.4	8.8	6.2	14.9	37.0	2.5
50-8T	8	11.9	9.5	17.4	8.0	7.0	14.9	37.0	2.5
50-10T	10	11.9	9.5	17.4	10.9	9.6	14.9	42.5	2.5
50-12T	12	11.9	9.5	17.4	10.5	10.0	14.9	42.5	2.5
70-6T	6	14.5	11.5	20.9	8.8	6.2	17.0	40.5	3.0
70-8T	8	14.5	11.5	20.9	8.0	7.0	17.0	40.5	3.0
70-10T	10	14.5	11.5	20.9	10.9	9.6	17.0	46.0	3.0
70-12T	12	14.5	11.5	20.9	10.5	10.0	17.0	46.0	3.0

CABLE TERMINATIONS continued

Copper Tube Terminals continued

Part No.	Stud Size (mm)	A	B	W	E	F	D	L	T
70-14T	14	14.5	11.5	20.9	13.0	13.0	17.0	50.0	3.0
70-16T	16	14.5	11.5	20.9	13.0	13.0	17.0	50.0	3.0
95-8T	8	16.7	13.5	24.3	10.9	9.6	19.0	49.5	3.2
95-10T	10	16.7	13.5	24.3	10.9	9.6	19.0	49.5	3.2
95-12T	12	16.7	13.5	24.3	10.5	10.0	19.0	49.5	3.2
95-14T	14	16.7	13.5	24.3	13.0	13.0	19.0	56.0	3.2
95-16T	16	16.7	13.5	24.3	13.0	13.0	19.0	56.0	3.2
120-10T	10	19.0	15.0	27.3	14.4	9.6	20.0	55.5	4.0
120-12T	12	19.0	15.0	27.3	14.0	10.0	20.0	55.5	4.0
120-14T	14	19.0	15.0	27.3	13.2	10.8	20.0	55.5	4.0
120-16T	16	19.0	15.0	27.3	13.0	13.0	20.0	60.0	4.0
150-10T	10	21.0	16.5	30.2	14.0	10.0	23.0	62.0	4.5
150-12T	12	21.0	16.5	30.2	14.0	10.0	23.0	61.0	4.5
150-14T	14	21.0	16.5	30.2	13.2	13.0	23.0	61.0	4.5
150-16T	16	21.0	16.5	30.2	13.0	13.0	23.0	65.0	4.5
185-10T	10	23.0	18.5	33.3	15.5	9.2	29.0	66.5	4.5
185-12T	12	23.0	18.5	33.3	15.5	9.2	29.0	68.0	4.5
185-14T	14	23.0	18.5	33.3	15.5	9.2	29.0	68.0	4.5
185-16T	16	23.0	18.5	33.3	13.0	13.0	29.0	70.0	4.5
240-10T	10	26.0	21.0	37.7	18.0	17.0	32.0	88.0	5.0
240-12T	12	26.0	21.0	37.7	18.0	17.0	32.0	88.0	5.0
240-14T	14	26.0	21.0	37.7	18.0	17.0	32.0	88.0	5.0
240-16T	16	26.0	21.0	37.7	18.0	17.0	32.0	88.0	5.0
240-20T	20	26.0	21.0	37.7	18.0	17.0	32.0	88.0	5.0
300-10T	10	28.0	23.0	41.0	18.0	17.0	37.0	97.0	5.0
300-12T	12	28.0	23.0	41.0	18.0	17.0	37.0	97.0	5.0
300-14T	14	28.0	23.0	41.0	18.0	17.0	37.0	97.0	5.0
300-16T	16	28.0	23.0	41.0	18.0	17.0	37.0	97.0	5.0
300-20T	20	28.0	23.0	41.0	18.0	17.0	37.0	97.0	5.0
400-10T	10	32.0	27.0	47.3	22.0	22.0	38.0	108.0	5.0
400-12T	12	32.0	27.0	47.3	22.0	22.0	38.0	108.0	5.0
400-14T	14	32.0	27.0	47.3	22.0	22.0	38.0	108.0	5.0
400-16T	16	32.0	27.0	47.3	22.0	22.0	38.0	108.0	5.0
400-20T	20	32.0	27.0	47.3	22.0	22.0	38.0	108.0	5.0
500-14T	14	36.0	30.0	53.0	28.0	24.0	38.0	117.0	6.9
500-16T	15	36.0	30.0	53.0	28.0	24.0	38.0	117.0	6.9
500-20T	20	36.0	30.0	53.0	28.0	24.0	38.0	117.0	6.9
630-16T	16	44.0	33.8	63.0	25.0	23.0	46.0	127.0	10.2
630-20T	20	44.0	33.8	63.0	25.0	23.0	46.0	127.0	10.2
800-20T	20	49.0	38.0	70.0	34.0	34.0	56.0	164.0	11.0
1000-20T	20	53.0	42.5	77.0	34.0	34.0	56.0	169.0	10.5

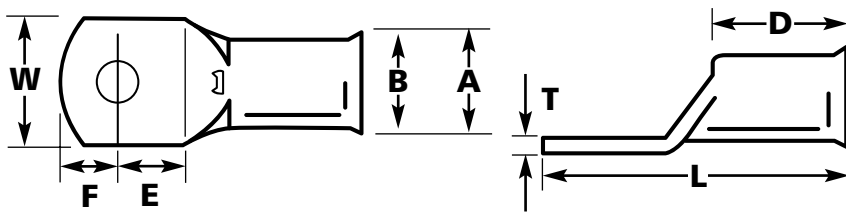
Cable Termination Components only offer high quality British made Copper Tube Terminals. These are made from CW024A (C106) Copper Tube as standard and Electro tin plated to a nominal thickness of 5 Microns. They are manufactured from seamless Copper Tube to BSEN12449. Our terminals are all bell-mouthed entry for easy termination to cable and have inspection holes to ensure cable is inserted correctly prior to crimping. As well as our standard range of copper tube terminals, we can offer a bespoke range of terminals made entirely to your specification to suit any application.

CABLE TERMINATIONS continued

Heavy Duty Copper Tube Terminals



MANUFACTURED
IN THE UK



The numerical part of the series reference denotes the conductor cross sectional area in mm². Thus to order, for example, a terminal for a 10mm² conductor and a M12 stud size the full ordering reference is CAT 10-12.

Part No.	Stud Size (mm)	A	B	W	E	F	D	L	T
HDT 1.5	4	3.6	1.9	8.0	5.0	4.0	6.0	18.0	0.9
	5	3.6	1.9	8.0	5.0	4.0	6.0	18.0	0.9
	6	3.6	1.9	10.0	6.0	5.5	6.0	20.0	0.6
HDT 2.5	4	3.9	2.4	7.7	5.0	4.0	7.5	20.0	1.0
	5	3.9	2.4	10.0	5.5	5.5	8.0	21.5	1.1
	6	3.9	2.4	10.0	6.5	5.5	8.0	21.5	0.6
	8	4.4	2.6	12.0	9.0	6.0	8.0	26.5	0.7
HDT 4	4	4.7	3.0	10.0	6.0	5.0	8.0	21.5	1.1
	5	4.7	3.0	10.0	5.5	5.5	8.0	21.5	1.1
	6	4.7	3.0	10.0	5.5	5.5	8.0	21.5	1.1
	8	4.7	3.0	12.0	9.0	6.0	7.5	26.5	0.9
HDT 6	4	5.5	3.8	10.0	5.9	54.1	8.5	24.5	1.2
	5	5.5	3.8	10.0	5.9	5.1	8.5	24.5	1.2
	6	5.5	3.8	10.0	5.9	54.1	8.5	24.5	1.2
	8	5.5	3.8	12.0	8.0	7.0	8.5	27.5	1.0
	10	5.5	3.8	15.0	13.0	8.0	8.5	34.0	0.9
HDT 10	B	6.9	4.4	11.0	5.9	5.1	9.0	27.0	2.0
	5	6.9	4.4	11.0	5.9	5.1	9.0	27.0	2.0
	6	6.9	4.4	11.0	5.9	5.1	9.0	27.0	2.0
	8	6.9	4.4	14.0	9.7	8.3	10.0	35.0	1.6
	10	6.9	4.4	16.0	12.0	10.0	10.0	39.0	1.5
	12	6.9	4.4	18.0	12.0	10.0	10.0	39.0	1.2
HDT 16	B	8.0	5.6	11.5	5.9	5.1	11.0	28.5	2.2
	5	8.0	5.6	11.5	5.9	5.1	11.0	28.5	2.2
	6	8.0	5.6	11.5	5.9	5.1	11.0	28.5	2.2
	8	8.0	5.6	14.0	9.7	8.3	13.0	38.0	1.8
	10	8.0	5.6	16.0	12.0	10.0	13.0	42.0	1.6
	12	8.0	5.6	18.0	12.0	10.0	13.0	42.0	1.3
HDT 25	B	9.5	7.0	13.5	9.7	8.3	13.0	40.0	2.4
	5	9.5	7.0	13.5	9.7	8.3	13.0	40.0	2.4
	6	9.5	7.0	13.5	9.7	8.3	13.0	40.0	2.4
	8	9.5	7.0	13.5	9.7	8.3	13.0	40.0	2.4
	10	9.5	7.0	16.0	12.0	10.0	13.0	44.0	2.0
	12	9.5	7.0	18.0	12.0	10.0	13.0	44.0	1.8

Nominal dimensions mm

NOTE: Series HDT 10 and above have chamfered entry. Series HDT 10 and above can be supplied as Right Angle terminals add suffix B90 The HD range can be supplied without inspection hole making them suitable for soldered joints. 2011V4P1

CABLE TERMINATIONS continued

Heavy Duty Copper Tube Terminals cont

Part No.	Stud Size (mm)	A	B	W	E	F	D	L	T
HDT 35	B	11.0	8.2	15.5	9.7	8.3	14.0	41.0	2.8
	5	11.0	8.2	15.5	9.7	8.3	14.0	41.0	2.8
	6	11.0	8.2	15.5	9.7	8.3	14.0	41.0	2.8
	8	11.0	8.2	15.5	9.7	8.3	14.0	41.0	2.8
	10	11.0	8.2	15.5	12.0	10.0	14.0	45.0	2.8
	12	11.0	8.2	18.0	12.0	10.0	14.0	45.0	2.5
HDT 50	B	12.1	9.5	17.2	9.7	8.3	18.0	46.0	2.6
	5	12.1	9.5	17.2	9.7	8.3	18.0	46.0	2.6
	6	12.1	9.5	17.2	9.7	8.3	18.0	46.0	2.6
	8	12.1	9.5	17.2	9.7	8.3	18.0	46.0	2.6
	10	12.1	9.5	17.2	12.0	10.0	18.0	50.0	2.6
	12	12.1	9.5	17.2	12.0	10.0	18.0	50.0	2.6
HDT 70	B	15.0	11.5	21.4	9.7	8.3	18.0	48.0	3.5
	5	15.0	11.5	21.4	9.7	8.3	18.0	48.0	3.5
	6	15.0	11.5	21.4	9.7	8.3	18.0	48.0	3.5
	8	15.0	11.5	21.4	9.7	8.3	18.0	48.0	3.5
	10	15.0	11.5	21.4	12.0	10.0	18.0	52.0	3.5
	12	15.0	11.5	21.4	12.0	10.0	18.0	52.0	3.5
	14	15.0	11.5	21.4	16.5	16.5	18.0	64.0	3.5
	16	15.0	11.5	21.4	16.5	16.5	18.0	64.0	3.5
HDT 95	B	17.0	13.5	24.5	12.0	10.0	24.0	58.0	3.5
	8	17.0	13.5	24.5	12.0	10.0	24.0	58.0	3.5
	10	17.0	13.5	24.5	12.0	10.0	24.0	58.0	3.5
	12	17.0	13.5	24.5	12.0	10.0	24.0	58.0	3.5
	14	15.0	11.5	21.4	16.5	16.5	18.0	64.0	3.5
	16	15.0	11.5	21.4	16.5	16.5	18.0	64.0	3.5
HDT 120	B	19.0	15.0	27.2	16.5	16.5	27.0	75.0	4.0
	8	19.0	15.0	27.2	16.5	16.5	27.0	75.0	4.0
	10	19.0	15.0	27.2	16.5	16.5	27.0	75.0	4.0
	12	19.0	15.0	27.2	16.5	16.5	27.0	75.0	4.0
	14	19.0	15.0	27.2	16.5	16.5	27.0	75.0	4.0
	16	19.0	15.0	27.2	16.5	16.5	27.0	75.0	4.0
	20	19.0	15.0	27.2	18.7	14.3	27.0	75.0	4.0
HDT 150	B	21.0	16.5	30.0	16.5	16.5	27.0	78.0	4.5
	8	21.0	16.5	30.0	16.5	16.5	27.0	78.0	4.5
	10	21.0	16.5	30.0	16.5	16.5	27.0	78.0	4.5
	12	21.0	16.5	30.0	16.5	16.5	27.0	78.0	4.5
	14	21.0	16.5	30.0	16.5	16.5	27.0	78.0	4.5
	16	21.0	16.5	30.0	16.5	16.5	27.0	78.0	4.5
	20	21.0	16.5	30.0	17.0	16.0	27.0	78.0	4.5
HDT 185	B	23.0	18.5	33.5	16.5	16.5	30.0	82.0	4.5
	8	23.0	18.5	33.5	16.5	16.5	30.0	82.0	4.5
	10	23.0	18.5	33.5	16.5	16.5	30.0	82.0	4.5
	12	23.0	18.5	33.5	16.5	16.5	30.0	82.0	4.5
	14	23.0	18.5	33.5	16.5	16.5	30.0	82.0	4.5
	16	23.0	18.5	33.5	16.5	16.5	30.0	82.0	4.5
	20	23.0	18.5	33.5	17.0	16.0	30.0	82.0	4.5

Nominal dimensions mm

Continued overleaf

Reduced Palm Tube Terminals



MANUFACTURED
IN THE UK

Part No.	Stud Ø	A	B	C	D	E	W	L
10-5TRP	M5	6.9	4.5	6.0	6.5	8.0	9.0	26.0
16-5TRP	M5	7.9	5.6	6.0	6.5	10.0	9.0	29.0
25-5TRP	M5	9.5	7.0	6.0	6.5	12.0	9.0	31.5
35-6TRP	M6	11.0	8.2	7.0	8.0	13.0	11.5	36.5
50-6TRP	M6	12.1	9.5	7.0	8.0	18.0	11.5	40.5
70-6TRP	M6	15.0	11.5	7.0	8.0	20.0	11.5	44.0
95-8TRP	M8	17.0	13.5	8.0	9.0	22.0	15.5	52.5
120-8TRP	M8	19.0	15.0	9.0	14.0	26.0	19.0	60.0
120-10TRP	M10	19.0	15.0	9.0	14.0	26.0	19.0	60.0
150-8TRP	M8	21.0	16.5	9.0	18.0	26.0	19.0	70.0
150-10TRP	M10	21.0	16.5	9.0	18.0	26.0	19.0	70.0
185-10TRP	M10	23.0	18.5	9.0	18.0	30.0	24.5	77.0
240-10TRP	M10	26.0	21.0	9.0	13.0	32.0	31.0	80.0
240-12TRP	M12	26.0	21.0	12.0	16.0	32.0	31.0	86.0
240-16TRP	M16	26.0	21.0	17.0	19.0	32.0	31.0	94.0
300-12TRP	M12	28.0	23.0	12.0	16.0	37.0	31.0	95.0

Other sizes available upon request.

Copper Butt Splices



Cable Termination Components
Copper Butt Splices are manufactured for joining low voltage conductors. These are manufactured with an internal taper at both ends and a central stop for correct termination.



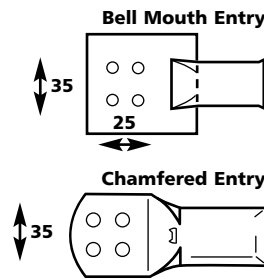
MANUFACTURED
IN THE UK

Part Number	Dimension A (mm)	Dimension B (mm)	Dimension L (mm)
CBS1.5	3.3	1.8	14.0
CBS2.5	4.2	2.3	16.0
CBS4	5.0	3.0	19.0
CBS6	6.0	4.0	22.0
CBS10	6.6	4.7	25.0
CBS16	7.5	5.6	30.0
CBS25	9.4	7.0	35.0
CBS35	10.6	8.2	40.0
CBS50	12.0	9.5	44.0
CBS70	14.7	11.5	44.0
CBS95	16.7	13.5	46.0
CBS120	19.0	15.0	50.0
CBS150	21.0	16.5	54.0
CBS185	23.0	18.5	56.0
CBS240	26.0	21.0	58.0
CBS300	28.0	23.0	60.0
CBS400	32.0	27.0	63.0
CBS500	38.1	30.0	135.0
CBS630	44.0	33.8	135.0
CBS800	49.0	38.0	135.0
CBS1000	53.0	42.5	135.0

CABLE TERMINATIONS continued

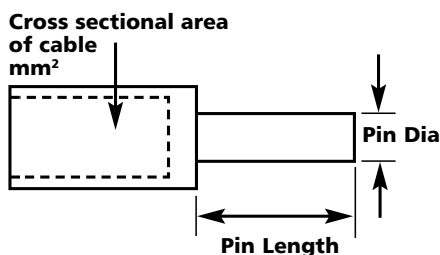
Copper Transformer Fixing Terminals

Part No.	Cable Size (mm)	Stud Size (mm)
CTFT 70	70	8
CTFT 95	95	8
CTFT 120	120	8
CTFT 150	150	8
CTFT 185	185	8
CTFT 240	240	8
CTFT 300	300	8
CTFT 400	400	8
CTFT 500	500	8
CTFT 630	630	8
CTFT 800	800	8
CTFT 1000	1000	8



Cable Termination Components Transformer Fixing Terminals are manufactured with four 8mm stud holes as standard, other stud holes and stud spacing's are available to order. Up to and including CTFT 300 are manufactured as brazed palm, CTFT 400 and above are manufactured from one single tube.

Copper Reducing Pins



Cable Termination Components Copper Reducing Pins are designed to reduce a conductor's size when cables are oversized. Our standard sizes are listed below and larger or special sizes can be manufactured to suit any application.

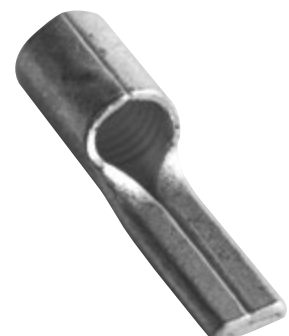


Part Number	Cable Size (mm ²)	Pin Length (mm)	Pin Diameter (mm)
CRP10	10	10	3.8
CRP16	16	13.5	3.7
CRP25	25	19	5.0
CRP35	35	19	7.5
CRP50	50	19.5	7.5
CRP70	70	18	8.0
CRP95	95	18	8.0
CRP120	120	24	10
CRP150	150	24	10
CRP185	185	25	8.0
CRP240	240	25	14
CRP300	300	32	16
CRP400	400	32	16

FLAT COPPER REDUCING PINS

Part No.	Pin Length (mm)	Pin Width (mm)
FRP10	13.2	4.3
FRP16	18.2	5.3
FRP25	18.5	7.0
FRP35	18.8	7.0
FRP50	19.2	8.4
FRP70	23.0	11.0
FRP95	23.0	12.5

Made from copper strip our Flat Copper Reducing Pins are manufactured in conductor sizes 10mm to 95mm and are designed to terminate conductors into contact blocks.



Copper Tube Terminals – Specials

RIGHT ANGLE CABLE LUGS

Our Right Angle Cable Lugs are available from stock with palm angles of 90/30/45/55/70 degree's. Our British made terminals can be made with any stud hole to suit any application.

TELECOMMUNICATION TERMINALS

Two hole fixing Telecommunication Terminals can be manufactured with any stud spacing.

NARROW PALM TERMINALS

Narrow Palm Terminals are manufactured with a special contained palm width to allow easier termination in such applications as LV circuit breakers with a reduced spaced terminal block and can be made to suit any application.



Mechanical Connectors

MECHANICAL CONNECTORS

Suitable for jointing copper/aluminium sector/circular cables.

Part Number	Cable & Range (mm ²)	Stud Hole Size (mm)
ML35-95	35-95	12
ML95-185	95-185	12
ML240-300	240-300	12



MECHANICAL INLINE CONNECTORS

Straight connectors for stranded or solid cables are made of brass and suitable for jointing copper/aluminium sector/circular cables.

Part Number	Size (mm)
MF1/1	10-95
MF1/2	95-185
MF1/3	185-300



BRASS MECHANICAL INLINE CONNECTORS

Straight through mechanical connectors with shear head bolts enable you to join copper to aluminium cables with the use of a brass gauze.

Part Number	Size (mm)
MC6-10	6-10
MC16-25	16-25
MC35-50	35-50
MC70-120	70-120



Crimping Tools



MC4 / MC3

This is a PV installer must have, this high precision MC4 crimping tool is specially designed for the MC4 connectors which are commonly found in PV systems. This MC4 tool provides 1.2 tons of power and ensures a strong connection with all MC4 connectors. MC3 crimping tool also available.



RTI-CH

Ratchet Crimper with cushion handles to suit 1.5-6mm insulated crimp terminals.



RTI

Ratchet Crimper to suit 1.5-6mm insulated crimp terminals.



RT16

Ratchet Crimper to suit 10 & 16 mm copper tube terminals.



RT1516

Ratchet Crimper to suit 1.5-16mm copper tube terminals.



RT625

Ratchet Crimper to suit 6-25 mm copper tube terminals.



CT650

Non Ratchet Hexagon Crimper to suit 6-50mm copper tube terminals.



CT25-150

Non Ratchet Hexagon Crimper to suit 2-150mm copper tube terminals.



CT10-120

Non Ratchet Indent Crimp tool to suit 10-120mm copper tube terminals.



RT6-150

Ratchet Crimp Tool to suit 6-150mm copper tube terminals c/w hexagonal dies and case.

Crimping Tools continued



HH10-185

Hydraulic Crimp Tool to suit 10-185mm copper tube terminals c/w hexagonal dies and case.



HH10-300

Hand Hydraulic Crimper to suit 10-300mm copper tube terminals c/w hexagonal dies and case.



HH10-400

Hand Hydraulic Crimper to suit 10-400mm copper tube terminals c/w hexagonal dies and case.



HCH400

Hydraulic Crimping Head Only, to accept hexagonal C dies 10-400mm, to be used with HFP1.



HFP1

Hydraulic Foot Pump with automatic release for use with HCH400 and hydraulic cutting heads.

Boot Lace Ferrule Crimpers



RTB0525

Ratchet Crimper to suit 0.5-2.5mm Insulated Ferrules.



RTB07510

Ratchet Crimper to suit 0.75-10mm Insulated Ferrules.



RTB56

Ratchet Crimper to suit 0.25-6mm Insulated Ferrules.



RTB616

Ratchet Crimper to suit 6-16mm Insulated Ferrules.



RTB1035

Ratchet Crimper to suit 10-35mm Insulated Ferrules.



RTB2550

Ratchet Crimper to suit 25-50mm Insulated Ferrules.

Cable Tie Guns



CTG2248 MET

All steel cable tie tensioning tool with cut off facility. For nylon ties 2.2mm - 4.8mm diameter.



CTG1

Cable tie tensioning tool with cut off facility. For nylon ties 2.2mm - 4.8mm diameter.



CTI-SST

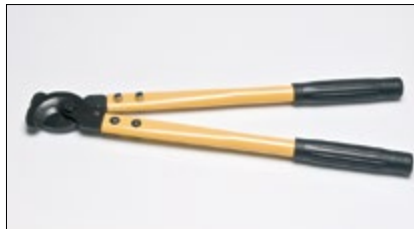
Semi-automatic cable tie tensioning tool with cut off facility. For stainless steel ties up to 9mm diameter.

Cable Cutters



CC38

Suitable for cutting copper and aluminium cables to 38mm².



CC1

Suitable to cutting copper and aluminium cables up to 125mm².



CC2

Suitable for cutting copper and aluminium cables up to 250mm².



CC3

Suitable for cutting copper and aluminium cables up to 500mm².



RCC240

Ratchet Cable Cutter for copper and aluminium cables up to 240mm².



RCC400HD

Heavy Duty Ratchet Cable Cutter for copper and aluminium cables up to 400mm².



MCT-1

Modular Crimp Tool.



PDT-1

Punch Down Tool.



VS1

Volt Stick.

TOOLING continued

Conduit Cutters



CC42

Conduit cutter suitable for round and box type PVC conduits. 42mm diameter maximum.

Wire Strippers



WS2

Triple action wire stripper for cables 0.5 – 4mm².



WS3

Light weight self adjusting wire stripper to suit cables 0.5-6mm².

Threaded Rod Cutter



Part Number	Description
RC10	Threaded Rod Cutter
RCBM6	Rod Cutter Spare Blade M6
RCBM8	Rod Cutter Spare Blade M8
RCBM10	Rod Cutter Spare Blade M10



Part Number	Description
TRECM8	Threaded Rod End Caps M8
TRECM10	Threaded Rod End Caps M10

Folding Sack Truck

FST1 FOLDING SACK TRUCK



TOOLING continued

Professional VDE Screwdrivers

Black Phosphate-tipped S2 steel blade with ergonomic polypropylene handle.

VDE Insulated Shank with slotted head working up to 1000V AC.

Standard VDE/IEC60900:2012.



Part Number	Description
CT771754	SL3 X 80mm VDE Screwdriver
CT584913	SL4 x 100mm VDE Screwdriver
CT572200	SL5.5 x 125mm VDE Screwdriver
CT759646	SL6.5 x 150mm VDE Screwdriver
CT525163	PZ0 x 75mm VDE Screwdriver
CT320202	PZ1 x 80mm VDE Screwdriver
CT452348	PZ2 x 100mm VDE Screwdriver
CT508615	PH0 x 75mm VDE Screwdriver
CT315644	PH1 x 80mm VDE Screwdriver
CT658798	PH2 x 100mm VDE Screwdriver

Additional Electrician Tools

Part Number	Description
C529073	Open Tote Tool Case
CT250192	5m Tough Tape Measure
CT251432	Electricians Knife
CT677484	Mains Tester
CT763591	16 oz Claw hammer
CT783103	Socket Tester 13amp
CT868714	M3.5 Re-Threading Tool
CT987512	Pocket Spirit Level
CTSW33	Junior Hacksaw
CTSW30	Heavy Duty Hacksaw
CTSW17	Pad Saw



Complete kit pictured available:

AETB1 **APPRENTICE ELECTRICIAN** **TOOLKIT**

CTLOCKOUT **ELECTRICAL LOCKOUT KIT**



TOOLING continued

Holesaws

HSS M3 BI-METAL HOLESAW

Part Number	Size (mm)
CHS14	14.00
CHS16	16.00
CHS17	17.00
CHS19	19.00
CHS20	20.00
CHS21	21.00
CHS22	22.00
CHS24	24.00
CHS25	25.00
CHS27	27.00
CHS28	28.00
CHS29	29.00
CHS30	30.00
CHS32	32.00
CHS33	33.00
CHS35	35.00
CHS37	37.00
CHS38	38.00
CHS40	40.00

Part Number	Size (mm)
CHS41	41.00
CHS43	43.00
CHS44	44.00
CHS46	46.00
CHS48	48.00
CHS51	51.00
CHS52	52.00
CHS54	54.00
CHS57	57.00
CHS59	59.00
CHS60	60.00
CHS64	64.00
CHS65	65.00
CHS67	67.00
CHS68	68.00
CHS70	70.00
CHS73	73.00
CHS76	76.00
CHS79	79.00



Part Number	Size (mm)
CHS83	83.00
CHS86	86.00
CHS89	89.00
CHS92	92.00
CHS95	95.00
CHS98	98.00
CHS102	102.00
CHS105	105.00
CHS108	108.00
CHS111	111.00
CHS114	114.00
CHS121	121.00
CHS127	127.00
CHS140	140.00
CHS146	146.00
CHS152	152.00

Part Number	Description
CHA1	9.50mm-HEX Suitable for Holesaw 14-30mm Arbor
CHA2	11.0mm-HEX Suitable for Holesaw 32-152mm Arbor
CHASDS3	SDS Shank Suitable for Holesaw 14-30mm Arbor
CHASDS4	SDS Shank Suitable for Holesaw 32-152mm Arbor
CHSPILOT	Pilot Drill Bit for Arbor



Next day delivery

Orders can be dispatched up until 4.00pm for next day delivery (provided items are in stock). No minimum order value.

TOOLING continued

Ladder Range

Part Number	Description
LAD4	4 Tread Fibreglass Step Ladder
LAD5	5 Tread Fibreglass Step Ladder
LAD6	6 Tread Fibreglass Step Ladder
LAD8	8 Tread Fibreglass Step Ladder
LAD10	10 Tread Fibreglass Step Ladder
ASTEP	Aluminium Step
FSTEP	Fibreglass step
PLAT4	4 Tread Fibreglass Platform Ladder
PLAT5	5 Tread Fibreglass Platform Ladder



Raaco Boxes

Part Number	Description
C136143	Raaco Box 12 Compartment
C136167	Raaco Box 18 Compartment
C136150	Raaco Box 9 Compartment
C136181	Raaco Box 36 Compartment
C136242	Raaco Handy Box Storage System - 4 Drawer
C715362	Raaco Assorted Box
C760331	Raaco Tool Bag Pro 16"
C760348	Raaco Tool Bag Pro 20"
C760355	Raaco Tool Bag Pro 24"
DC11-44	Raaco 44 draw cabinet



Kits & Kit Boxes



**CK3 – RATCHET TOOL
PRE-INSULATED KIT**



**QF-KIT-1 – QUICK FIT
PUSHIN CONNECTOR
KIT** c/w wire stripper



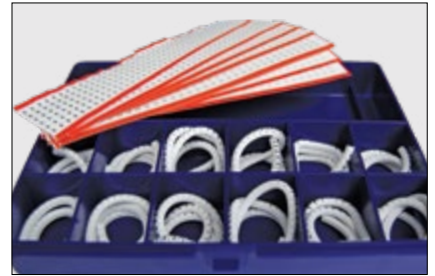
**BK1 – BOOTLACE
FERRULE KIT**



**COPK1 – COPPER
TUBE KIT BOX**



**CTCK-1 – COPPER
TUBE CRIMP KIT**
1.5 - 16mm



MAR-KIT
Marker kit 0-9 BLK on WHT cable
markers plus adhesive strips.



STOCK & DIE SET
20 - 25mm.



LARGE KIT BOX

TOOLING continued

Kits & Kit Boxes continued



E18FIRE-KIT

Contents:

- 1 x large robust box
- 1 x CT1-SST tensioner
- 200 x 200mm stainless steel ties
- 50 stainless cable tie bases
- 50 x FSC25 fire safe clips
- 50 x ILCR608RED Linian Clips
- 5 of each 20mm and 25mm metal saddles
- 50 x concrete direct screws

Also available:

E18FIRE-KIT(NOTOOL)

as above without tool



MARKIT-XL

Contains 200 of each 0-9, A-Z, L1, L2 AND L3 AND various symbols plus the metal applicator (9000 markers).



TVK1

10 piece mixed coax kit including coax ends, satellite connectors and F splitters in a smart Raaco box.



CFK18

180 piece fuse kit mixed

- 30 fuses for standard 13A plugs containing: 3A, 5A & 13A
- 60 fast acting glass 5x20mm fuses containing: 500mA, 1A, 2A, 2.5A, 3.15A & 5A
- 90 slow blow glass 5x20mm fuses containing: 1A, 1.25A, 1.6A, 2A, 2.5A, 3.15A, 5A, 6.3A & 10A
- 1 reusable, segmented flip-top box



HB-BATTERY

20 x AA, 20 x AAA and 10 x 9V

13A BS1362	5F 500mA	5F 1A	5F 2A	5F 2.5A	5F 3.15A
5A BS1362	5F 5A	5T 1A	5T 1.25A	5T 1.6A	5T 2A
3A BS1362	5T 2.5A	5T 3.15A	5T 5A	5T 6.3A	5T 10A

Kits & Kit Boxes continued

HANDY BOXES



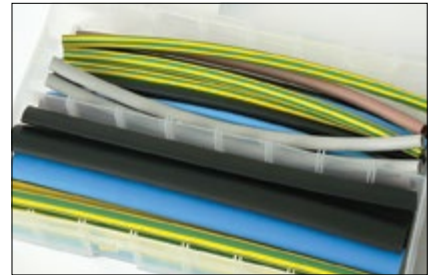
HB-SPLICE

Cable splicing kit 1.5 - 50mm.



HB-BOOT

Insulated bootlace ferrule kit
0.5 - 10mm.



HB-SHRINK

Heatshrink in all phase colours
and G/Y, 6.4, 9.5 and 12.7 O/D.



HB-COPP

Copper tube 6 - 25mm cable
entry with 6, 8, 10mm holes.



HB-CRIMP

Selection of pre-insulated
terminals 1.5 - 6mm over
1000 crimps.



HB-GROM

20 & 25mm open and blind
grommets.



HB-FIX

Cable ties – adhesive bases,
clips and fixing bolts.



HB-FUSE

Assorted glass fuses 20/30mm,
14 different amps.



HB-DFUSE

Assorted domestic fuses,
1,2,3,5,7,10 and 13 amp.



HB-S/TAP

Self tapping screws 6-12 gauge
BZP.



HB-P/CLIP

Nylon p-clips black 4.8mm -
27.9mm.



HB-BITS

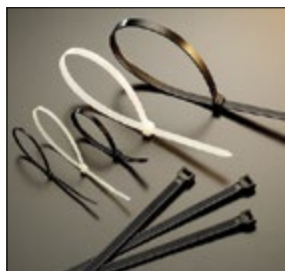
Screwdriver bits 25mm (PZ, slot,
PH, star and holders).

CABLE FIXINGS

Plastic Cable Ties

NATURAL & BLACK CABLE TIES

Nylon 6/6. UL94V2.
-40 - +85C. Please specify Natural or Black.
Pack of 100.



Part Number	Length (mm)	Width (mm)
CTC100-2.5	100	2.5
CTC140-3.6	140	3.6
CTC160-2.5	160	2.5
CTC160-4.8	160	4.8
CTC200-2.5	200	2.5
CTC200-4.8	200	4.8
CTC200-7.8	200	7.8
CTC300-3.6	300	3.6
CTC300-4.8	300	4.8
CTC300-7.8	300	4.8
CTC370-4.8	370	4.8
CTC370-7.8	370	7.8
CTC430-4.8	430	4.8
CTC500-12.6	500	12.6
CTC540-8.0	540	8.0
CTC750-8.0	750	8.0
CTC1000-12.6	1000	12.6

COLOURED CABLE TIES

Available in Blue, Red, Green, Yellow, Brown & Silver. Pack of 100.



Part Number	Length (mm)	Width (mm)
CT100-2.5	100	2.5
CT200-2.5	200	2.5
CT200-4.8	200	4.8
CT300-4.8	300	4.8

VELCRO ROLL

Available in Blue, Red, Green, Yellow, Brown & Silver.



Part Number	Length	Width
VELCRO10X25M	10mmx25m	Black

RELEASABLE CABLE TIES

Nylon 6/6. UL94V2. -40 - +85C. Please specify Natural or Black. Pack of 100.

Part Number	Length (mm)	Width (mm)
CT200-4.8B/REL	200	4.8
CT300-4.8B/REL	300	4.8
CT370-4.8B/REL	370	4.8
CT370-7.8B/REL	370	7.8



METAL DETECTABLE CABLE TIES

CTC Metal Detectable Cable Ties are designed for the food and pharmaceutical processing and chemical industries. The unique blue colour and metallic content throughout the cable tie ensures that they are detectable both visually and by metal process control equipment.

Part Number	Length (mm)	Width (mm)
MCT100-2.5	100	2.5
MCT140-3.5	140	3.5
MCT200-4.6	200	4.6
MCT280-4.6	280	4.6
MCT380-4.6	380	4.6
MCT360-7.5	360	7.5



CABLE FIXINGS continued

Plastic Cable Ties continued

PUSH MOUNTING CABLE TIES

Nylon 6/6. UL94V2. -40 - +85C. Please specify Natural or Black.
Pack of 100.



Part Number	Length (mm)	Width (mm)	Ø Hole (mm)	Panel Thickness (mm)	Maximum Bundle Dia. (mm)	Minimum Tensile Strength (mm)
CT200-4.8B/PM	200	4.8	6.3	3.6	50	22

CABLE TIES WITH MOUNTING HOLE

Nylon 6/6. UL94V2. -40 - +85C. Please specify Natural or Black. Pack of 100.

Part Number	Length (mm)	Width (mm)	Maximum Bundle Dia. (mm)	Minimum Tensile Strength (mm)	Screw Hole Size (mm)
CT150-3.6B/MH	150	3.6	32	13	4.5
CT200-4.8B/MH	200	4.8	54	22	4.5



MARKER CABLE TIES

Nylon 6/6. UL94V2. -40 - +85C. Please specify Natural or Black. Pack of 100.

Part Number	Length (mm)	Width (mm)	Tab Size (mm)	Maximum Bundle Dia. (mm)	Minimum Tensile Strength (mm)
CT100-2.5N/MAR	100	2.5	25 x 20	20	8
CT200-4.8N/MAR	200	4.8	25 x 20	20	8



Plastic Cable Tie Accessories

ADHESIVE BASES

with centre fixing hole

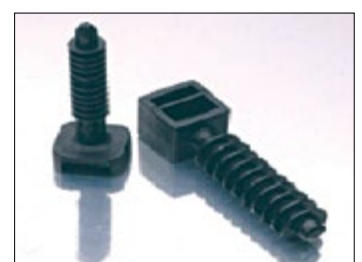
Part Number	Size (mm)
AB20N (Natural)	19 x 19
AB20B (Black)	19 x 19
AB28N (Natural)	28 x 28
AB28B (Black)	28 x 28

Part Number	Colour
AB20N-FIX	Natural
AB20B-FIX	Black
AB28N-FIX	Natural
AB28B-FIX	Black



MASONRY MOUNTS

Part Number	Size (mm)	Drill Hole Size
CTFB6	45	6
CTFB9	45	7



CABLE FIXINGS continued

Plastic Cable Tie Accessories continued

CABLE TIE CRADLES

Part Number	Colour
CRAD48B	Black
CRAD48N	Natural
CRAD78B	Black
CRAD78N	Natural



CABLE TIE EYELETS

Part Number	Colour
EL48B	Black
EL48N	Natural



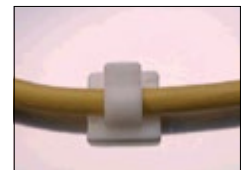
SELF ADHESIVE CLIPS

Part Number	Dia (mm)
SAF1	4 max
SAF2	8 max
SAF3	12 max



SELF ADHESIVE CABLE CLIPS

Part Number	Colour
ACC1	Natural
ACC2	Natural



PLASTIC P CLIPS

Part Number	Dia (mm)
PCB1	5
PCB2	6
PCB3	9
PCB4	12
PCB5	19
PCB6	25



FIXING BAND

(10m per box)



Part Number	Hole Size (mm)	Colours
FB12	5	Black, White, Red or Galvanised
FB17	7	Black, White, Red or Galvanised
FB26	8	Black, White, Red or Galvanised

Metal Cable Ties

STAINLESS STEEL CABLE TIES (Roller Ball Type)

316 Stainless Steel Cable Ties are ideal for use in hazardous environments, flame retardant with a high tensile strength. UL E227552, DNV E-6729. These are available in plain stainless steel or colour coated. Pack of 100.



Stainless Steel Cable ties 316 Grade

Part Number	Length (mm)	Width (mm)
SST150-4.6	150	4.6
SST200-4.6	200	4.6
SST300-4.6	300	4.6
SST360-4.6	360	4.6
SST520-4.6	520	4.6
SST200-7.9	200	7.9
SST300-7.9	300	7.9
SST360-7.9	360	7.9
SST520-7.9	520	7.9
SST1200-4.6	1200	4.6

Stainless Steel Cable ties 316 Grade Coated

Part Number	Length (mm)	Width (mm)
SST150-4.6C	150	4.6
SST200-4.6C	200	4.6
SST300-4.6C	300	4.6
SST360-4.6C	360	4.6
SST520-4.6C	520	4.6
SST200-7.9C	200	7.9
SST300-7.9C	300	7.9
SST360-7.9C	360	7.9
SST520-7.9C	520	7.9

CABLE FIXINGS continued

Cable Cleats

SINGLE FIXING CLEATS

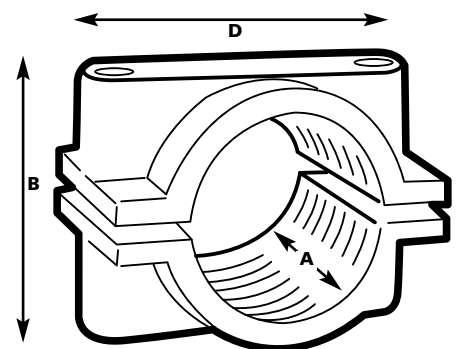
Part Number	Length (mm)	Cable Diameter (inches)	Bolt Holes (mm)
CC5	12.7	0.5	6
CC6	15.2	0.6	6
CC7	17.8	0.7	6
CC8	20.3	0.8	6
CC9	22.8	0.9	6
CC10	25.4	1.0	6
CC11	27.7	1.1	6
CC12	30.5	1.2	10
CC14	35.5	1.4	10
CC16	40.6	1.6	10
CC18	45.7	1.8	10
CC20	50.8	2.0	10



Please check cable diameter before ordering

2 PART CLAMPS (2 HOLE FIXING)

Part Number	Cable Dia (mm)	Cable Dia (inches)	A (mm)	B (mm)	D (mm)
TCC9	50.8-57.1	2-2.25	60.0	70.0	76.2
TCC10	57.0-63.5	2.25-2.5	60.0	77.0	76.2
TCC11	63.4-69.8	2.5-2.75	63.5	86.0	114.3
TCC12	69.7-76.2	2.75-3	63.5	93.0	114.3
TCC14	76.1-82.5	3-3.25	63.5	98.5	114.3
TCC15	82.5-105	3.25-4.25	75.0	120.0	147.0



CTC CABLES COPPER CONDUCTORS

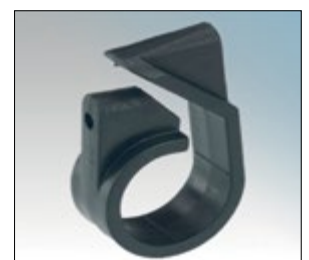
Cable Size	1	2	3	4	7	12	19	27
1.5	-	C5	C5	C6	C7	C8	C9	C10
2.5	-	C6	C6	C6	C7	C9	C10	C12
4.0	-	C6	C7	C7	C8	C11	-	-
6.0	-	C7	C8	C8	-	-	-	-
10	-	C8	C9	C9	-	-	-	-
16	-	C9	C10	C11	-	-	-	-
25	-	C12	C12	C12	-	-	-	-
35	-	C12	C12	C14	-	-	-	-
50	C8	C11	C12	C14	-	-	-	-
70	C9	C12	C14	C14	-	-	-	-
95	C10	C14	C16	C18	-	-	-	-

Cable Size	1	2	3	4
120	C11	C16	C18	C20
150	C12	C18	C20	TC9
185	C14	C20	TC9	TC10
240	C14	TC9	TC10	TC11
300	C16	TC9	TC10	TC12
400	C18	TC10	TC11	TC14
500	C18	-	-	-
630	C20	-	-	-
800	TC9	-	-	-
1000	TC10	-	-	-

600/1000V to BS6346 - Black polypropylene

TELE-CLEATS

Part Number	Size (mm)	Part Number	Size (mm)
385AA01	10.5 - 14.5mm	385AA05	21.7 - 28.5mm
385AA02	12.2 - 16.7mm	385AA06	26.2 - 34.2mm
385AA03	14.6 - 19.8mm	385AA07	31.9 - 41.6mm
385AA04	17.7 - 24.0mm	385AA08	39.3 - 51.1mm



CABLE FIXINGS continued

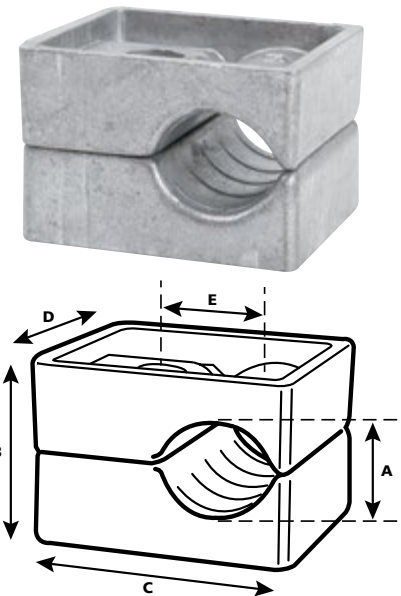
Aluminium Cable Cleats

Claw and two bolt cleats made of aluminium alloy. 10 - 114mm diameter, available in 19 sizes. Can be used for all types of cable routes. In plain finish for indoor normal industrial use or outdoor polluted areas. Epoxy coated for more hostile conditions. Operating temperature -60°C to +100°C.

CLAW CLEATS

Two piece single fixing design. Can be stacked to a maximum of three on one fixing.

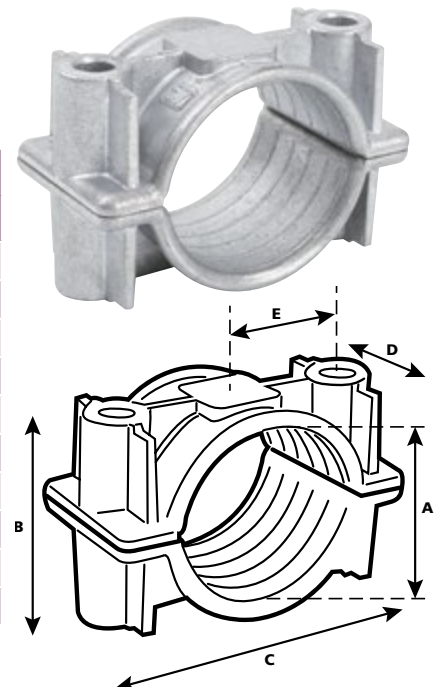
Part Number	Cable Ø A (mm)		B (mm)	C (mm)	D (mm)	E (mm)	Stud Size
	Min	Max					
C370BA01	10	13	21	38	46	16	M10
C370BA02	13	16	21	38	46	16	M10
C370BA03	16	19	24	41	46	18	M10
C370BA04	19	22	27	44	46	19	M10
C370BA05	22	25	30	48	46	21	M10
C370BA06	25	32	37	54	46	24	M10
C370BA07	32	38	43	60	46	27	M10
C370BA08	38	44	49	67	46	30	M10
C370BA09	44	51	56	73	46	34	M10



TWO BOLT CLEATS

Two piece double fixing design. Can be double stacked as a common fixing.

Part Number	Cable Ø A (mm)		B (mm)	C (mm)	D (mm)	E (mm)	Stud Size
	Min	Max					
C370BA10	51	57	68	98	49	38	M10
C370BA11	57	64	75	98	49	38	M10
C370BA12	64	70	84	135	64	57	M10
C370BA13	70	76	90	135	64	57	M10
C370BA14	76	83	96	140	64	57	M12
C370BA15	83	89	101	140	64	57	M12
C370BA16	89	95	114	152	76	63	M12
C370BA17	95	101	120	152	76	63	M12
C370BA18	101	108	134	165	76	70	M12
C370BA19	108	114	139	165	76	70	M12



Trefoil Aluminium Cable Cleats

Trefoil cleats made of aluminium alloy. 24 - 76mm diameter cables in trefoil groups, available in 33 sizes. Can be used for all types of cable routes. Supplied complete with top fastening. Available in a single or two fixing design. In plain finish for indoor normal industrial use or outdoor polluted areas. Epoxy coated for more hostile conditions. Operating temperature -60°C to +100°C.

These cleats are suitable for use at a maximum fault level of 30kA rms. Recommended maximum spacings, straight runs 900mm, vertical bends 300mm and horizontal bends on each support with, if necessary, intermediate unanchored cleats to limit restraint spacing 300mm.

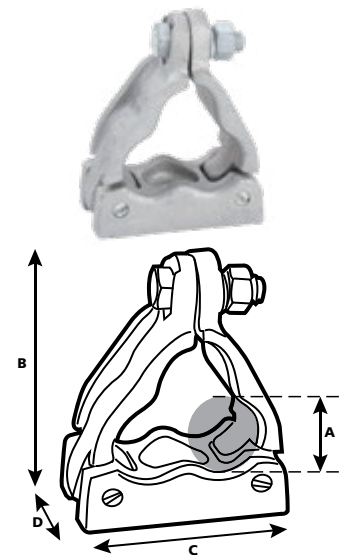
METHOD OF FIXING

In all applications the cleats should be mounted on either one or two M10 fixings as appropriate. It is essential that they are secured to supports that are capable of withstanding the prospective short circuit forces.

Part Number	Cable Ø A (mm)		B (mm)	D (mm)	C (mm) Single fix	C (mm) E (mm) Two fixing	
	Min	Max				C (mm)	E (mm)
C376AC01	24	25	94	38	75	128	102
C376AC02	25	27	97	38	75	128	102
C376AC03	27	28	100	38	75	128	102
C376AC04	28	30	103	38	76	130	104
C376AC05	30	32	105	38	79	133	107
C376AC06	32	34	105	38	83	135	109
C376AC07	34	35	109	38	86	137	110
C376AC08	35	36	113	38	89	138	113
C376AC09	36	38	116	38	92	140	114
C376AC10	38	40	119	38	95	145	118
C376AC11	40	41	122	38	99	147	121
C376AC12	41	43	124	38	105	149	123
C376AC13	43	44	127	38	108	150	124
C376AC14	44	46	130	38	112	154	128
C376AC15	46	48	133	38	114	156	129
C376AC16	48	49	137	38	118	159	133
C376AC17	49	51	140	38	121	165	135
C376AC18	51	53	143	38	124	165	137
C376AC19	53	55	146	38	127	172	141
C376AC20	54	56	155	44	133	183	152
C376AC21	56	57	158	44	137	187	155
C376AC22	57	59	160	44	141	189	157
C376AC23	59	60	163	44	145	191	160
C376AC24	60	62	165	44	148	194	162
C376AC25	62	64	168	44	152	196	165
C376AC26	64	65	172	44	156	199	168
C376AC27	65	67	176	44	160	202	170
C376AC28	67	68	178	44	164	205	173
C376AC29	68	70	181	44	168	208	176
C376AC30	70	72	187	44	171	215	183
C376AC31	72	73	190	44	175	217	186
C376AC32	73	74	193	44	179	220	188
C376AC33	74	76	197	44	183	222	192

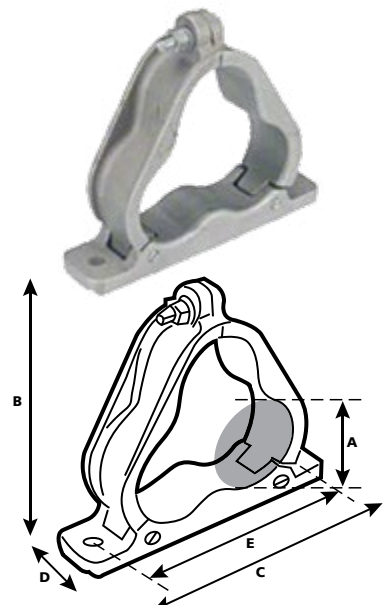
SINGLE FIXING

Plain finish – CTRAC



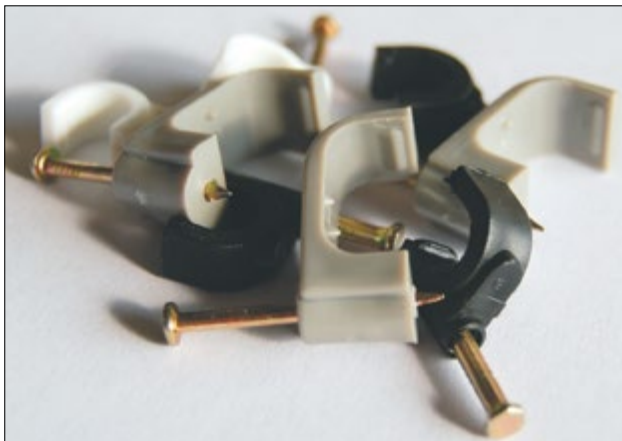
TWO FIXING

Plain finish – CTRAC2



CABLE FIXINGS continued

Cable Clips



FLAT-TYPE

Part Number	Size	Colour
Bell	2 x 4	White
Flat	3 x 5	White
T&E1	1mm	Grey/White
T&E15	1.5mm	Grey/White
T&E25	2.5mm	Grey/White
T&E4	4mm	Grey/White
T&E6	6mm	Grey/White
T&E10	10mm	Grey/White

ROUND-TYPE

Part Number	Size	Colour
35RWC	3.5mm	White
4RWC	4mm	White
5RWC	5mm	White
6RWC	6mm	White
7RWC	7mm	White
7RBLC	7mm	Black
7RBRC	7mm	Brown

E-TYPE

Part Number	Size	Colour
35EXCL	3-5mm	White/Black
57EXCL	5-7mm	White/Black
710EXCL	7-10mm	White/Black
710EXCL	7-10mm	Red
1014EXCL	10-14mm	White
710EXCL	7-10mm	White

Zip-Lock

Complete 'friction free' suspension sling for wrap-around installations. The clip is manufactured from a high quality zinc alloy. The oil impregnated sintered metal wedge is designed to offer the best locking solution. The stainless steel spring ensures the wedge engages first time. The galvanised high tensile wire rope supplied offers you a better SWL than others on the market. SWL 50Kg.



Part Number	Description
ZLS1	Zip Lock 1m length
ZLS1.5	Zip Lock 1.5m length
ZLS2	Zip Lock 2m length
ZLS3	Zip Lock 3m length
ZLS4	Zip Lock 4m length
ZLS5	Zip Lock 5m length
ZLS10	Zip Lock 10m length
ZLS15	Zip Lock 15m length
KL100	Zip Lock Clutch
GW-2MM-100M	2MM Gripple Wire 100m

PLASTIC WALL PLUGS

PWP

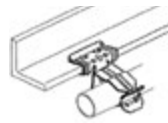


CABLE FIXINGS continued

Girder Clips

CONDUIT CLIPS

7kg load – box quantity 100/25.



Part Number	Beam Thickness	Conduit Diameter
CHH154-OCC1822	1.5-4mm	18-22mm
CHH154-OCC2230	1.5-4mm	22-30mm
CHH154-OCC3035	1.5-4mm	30-35mm
CHH410-OCC1822	4-10mm	18-22mm
CHH410-OCC2230	4-10mm	22-30mm
CHH410-OCC3035	4-10mm	30-35mm
CHH1015-OCC1822	10-15mm	18-22mm
CHH1015-OCC2230	10-15mm	22-30mm
CHH1015-OCC3035	10-15mm	30-35mm
CHH1520-OCC1822	15-20mm	18-22mm
CHH1520-OCC2230	15-20mm	22-30mm
CHH1520-OCC3035	15-20mm	30-35mm



11kg load – box quantity 100/25.

Part Number	Beam Thickness	Conduit Diameter
CHC37-OCC1822	3-7mm	18-22mm
CHC37-OCC2230	3-7mm	22-30mm
CHC37-OCC3035	3-7mm	30-35mm
CHC713-OCC1822	7-13mm	18-22mm
CHC713-OCC2230	7-13mm	22-30mm
CHC713-OCC3035	7-13mm	30-35mm
CHC1420-OCC1822	14-20mm	18-22mm
CHC1420-OCC2230	14-20mm	22-30mm
CHC1420-OCC3035	14-20mm	30-35mm



22kg load – box quantity 100/25.

Part Number	Rod Size	Conduit Size
CRC-313T	M6/M8/M10	≥20mm
CRC-320T	M6/M8/M10	≥40mm

T BAR CEILING CLIP & NUT

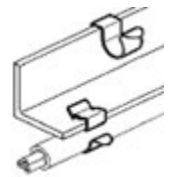
22kg load – box quantity 100/25.

Part Number	T Bar size/stud size/ stud length (mm)
CX-16S	25/6/16
CX-38S	25/6/38



EDGE CLIPS

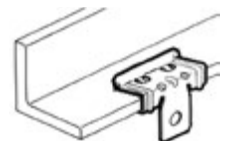
Box quantity 100.



Part Number	Girder Size	Conduit Diameter
CSEC-67	2-4mm	6-7mm
CSEC-89	2-4mm	8-9mm
CSEC-1011	2-4mm	10-11mm
CSEC-1214	2-4mm	12-14mm
CSEC-1518	2-4mm	15-18mm
CSEC-1924	2-4mm	19-24mm
CSEC-2530	2-4mm	5-30mm
CMEC-67	4-7mm	6-7mm
CMEC-89	4-7mm	8-9mm
CMEC-1011	4-7mm	10-11mm
CMEC-1214	4-7mm	12-14mm
CMEC-1518	4-7mm	15-18mm
CMEC-1924	4-7mm	19-24mm
CMEC-2530	4-7mm	25-30mm
CLEC-67	8-12mm	6-7mm
CLEC-89	8-12mm	8-9mm
CLEC-1011	8-12mm	10-11mm
CLEC-1214	8-12mm	12-14mm
CLEC-1518	8-12mm	15-18mm
CLEC-1924	8-12mm	19-24mm
CLEC-2530	8-12mm	25-30mm
CAEC1215	12-15mm	use with SEC
CAEC1520	15-20mm	use with SEC

HORIZONTAL HANGER

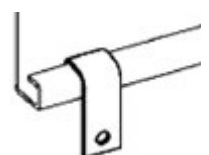
Box quantity 100.



Part Number	Beam Thickness	Load (kg)
CHH-154	1.5-4mm	70
CHH-410	4-10mm	90
CHH-1015	10-15mm	90
CHH-1520	15-20mm	90

VERTICAL HANGER

Box quantity 100.

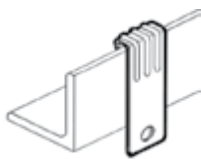


Part Number	Beam Thickness/ Return Depth	Load (kg)
CRCC-125	≤3mm / 12.5mm	20

CABLE FIXINGS continued

VERTICAL HANGER

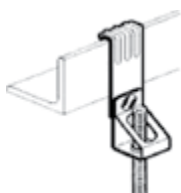
Box quantity 100.



Part Number	Beam Thickness	Load (kg)
CVH-155	1.5-5mm	70
CVH-57	5-7mm	70
CVH-37	3-7mm	70
CVH-410	4-10mm	70

VERTICAL ROD HANGER

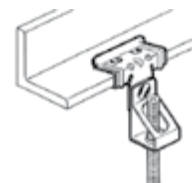
68kg load – box quantity 100/25.



Part Number	Beam Thickness	Rod Size
CVH155-VRH6T	1.5-5mm	M6
CVH155-VRH8T	1.5-5mm	M8
CVH155-VRH10T	1.5-5mm	M10
CVH57-VRH6T	5-7mm	M6
CVH57-VRH8T	5-7mm	M8
CVH57-VRH10T	5-7mm	M10
CVH37-VRH6T	3-7mm	M6
CVH37-VRH8T	3-7mm	M8
CVH37-VRH10T	3-7mm	M10
CVH410-VRH6T	4-10mm	M6
CVH410-VRH8T	4-10mm	M8
CVH410-VRH10T	4-10mm	M10

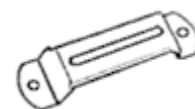
ROD HANGER

68kg load – box quantity 100/25.



Part Number	Beam Thickness	Rod Size
CHH154-VRH6T	1.5-4mm	M6
CHH154-VRH8T	1.5-4mm	M8
CHH154-VRH10T	1.5-4mm	M10
CHH410-VRH6T	4-10mm	M6
CHH410-VRH8T	4-10mm	M8
CHH410-VRH10T	4-10mm	M10
CHH1015-VRH6T	10-15mm	M6
CHH1015-VRH8T	10-15mm	M8
CHH1015-VRH10T	10-15mm	M10
CHH1520-VRH6T	15-20mm	M6
CHH1520-VRH8T	15-20mm	M8
CHH1520-VRH10T	15-20mm	M10

CABLE TRAY STAND OFF BRACKETS



Part Number	Beam Thickness	Rod Size
CSOB75LP	75mm	50
CSOB150LP	150mm	50
CSOB225LP	225mm	50
CSOB300LP	300mm	20
CSOB450LP	450mm	20

CTELE-16-26 TELESCOPIC BOX MOUNTING BRACKET 15"-26".



CALL

01453 821798



EMAIL

sales@ctcukltd



FAX

01453 823736

Free UK mainland delivery on orders over £100.

CABLE FIXINGS continued

Fixings

BRASS HEX SET SCREWS



Part Number	Description
BHSSM6X20	Brass Hex Set Screws M6x20
BHSSM6X25	Brass Hex Set Screws M6x25
BHSSM6X35	Brass Hex Set Screws M6x35
BHSSM6X50	Brass Hex Set Screws M6x50
BHSSM8X25	Brass Hex Set Screws M8x25
BHSSM8X40	Brass Hex Set Screws M8x40
BHSSM10X20	Brass Hex Set Screws M10x20
BHSSM10X25	Brass Hex Set Screws M10x25
BHSSM10X35	Brass Hex Set Screws M10x35
BHSSM10X50	Brass Hex Set Screws M10x50
BHSSM12x40	Brass Hex Set Screws M12x40

BRASS HEX NUT



Part Number	Description
BHNM6	Brass Hex Nut M6
BHNM8	Brass Hex Nut M8
BHNM10	Brass Hex Nut M10
BHNM12	Brass Hex Nut M12

BRASS HEX WASHER



Part Number	Description
BHWM6	Brass Hex Washer M6
BHWM8	Brass Hex Washer M8
BHWM10	Brass Hex Washer M10
BHWM12	Brass Hex Washer M12

MASONRY BOLTS



Part Number	Description
CMBM6	Masonry Bolts M6x50
CMBM8	Masonry Bolts M8x50
CMBM10	Masonry Bolts M10x50

FOLDED EYE BOLT



Part Number	Description
CFEBM6	Folded Eyebolt M6x80
CFEBM8	Folded Eyebolt M8x80
CFEBM10	Folded Eyebolt M10x80

EYE BOLT SHIELD



Part Number	Description
EBSM6	Eye Bolt Shield M6
EBSM8	Eye Bolt Shield M8
EBSM10	Eye Bolt Shield M10

LOOSE BOLT



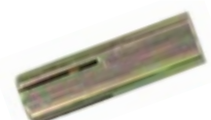
Part Number	Description
LBM6X50	Loose Bolt M6x50
LBM8X60	Loose Bolt M8x60
LBM8X80	Loose Bolt M8x80
LBM10X70	Loose Bolt M10x70
LBM10X90	Loose Bolt M10x90
LBM10X110	Loose Bolt M10x110

SPRING TOGGLE



Part Number	Description
STM5X50	Spring Toggle M5x50
STM5X75	Spring Toggle M5x75

DROP IN ANCHOR



Part Number	Description
DIAM6	Drop In Anchor M6
DIAM8	Drop In Anchor M8
DIAM10	Drop In Anchor M10

CABLE JOINTING

Resin Cable Joints

STRAIGHT JOINT KITS

Part Number	Cable Size (mm)	Cable Diameter (mm)
USJ10	1.5, 2.5, 4, 6, 10	8 - 20
USJ25	10, 16, 25	13 - 25
USJ50	25, 35, 50	18 - 30
USJ120	70, 95, 120	25 - 45
USJ240	150, 185, 240	45 - 60
USJ400	300, 400	50 - 100

Sizing chart for LV straight joints to suit 2, 3 and 4 core cables. Up to and including 35mm² connectors included.



BRANCH JOINT KITS

Part Number	Main/Branch Cable	Cable Size (mm)	Cable Diameter (mm)
UBJ10	Main Cable	4, 6, 10	8 – 20
	Branch Cable	1.5, 2.5, 4, 6, 10	8 – 20
UBJ25	Main Cable	10, 16, 25	13 – 30
	Branch Cable	1.5, 2.5, 4, 6, 10, 16, 25	8 – 25
UBJ50	Main Cable	25, 35, 50	18 – 30
	Branch Cable	1.5, 2.5, 4, 6, 10, 16, 25, 35	8 – 35
UBJ120	Main Cable	50, 70, 95, 120	25 – 45
	Branch Cable	1.5, 2.5, 4, 6, 10, 16, 25, 35	8 – 35
UBJ240	Main Cable	120, 150, 185, 240	45 – 60
	Branch Cable	1.5, 2.5, 4, 6, 10, 16, 25, 35	8 – 35
UBJ400	Main Cable	240, 300, 400	50 – 100
	Branch Cable	1.5, 2.5, 4, 6, 10, 16, 25, 35	8 – 35

Sizing chart for LV Branch Joints to suit 2, 3, 4 core cables. Up to and including 35mm² connectors included.

RESIN PACKS

Part Number	Pack Size (mm)
RP175	175ml
RP300	300ml
RP550	550ml
RP1000	1000ml (1 Litre)
RP2000	2000ml (2 Litres)
RP3000	3000ml (3 Litres)



CABLE JOINTING continued

ISO GEL

An easy to use non-toxic safe option for any application where a water tight seal is required. CTC ISO GEL is re-enterable and has no shelf life. Operating temperature -60 to +200C

Easy to mix with no waste.

Part Number	Description
CTCMG300	ISO GEL 500ml
CTCMG1000	ISO GEL 1000ml
GELBOX80	ISO GEL supplied with a 4x4 Junction Box
CTCGELCART	ISO GEL Cartridge 280ml



C391 POTTING COMPOUND

Protects electrical connections from moisture and is used for a variety of electrical applications including junction and conduit boxes.



Next day delivery

Orders can be dispatched up until 4.00pm for next day delivery (provided items are in stock). No minimum order value.

CABLE JOINTING continued

Plastic Enclosures

HEATING & LIGHTING JUNCTION BOXES (400v Rated)

Part Number	Description	Size (mm)	Specification
C3050	H&L Mini Junction Box	90x43	IP55 / IK07
C3051	H&L Mini Junction Box	75x75	IP55 / IK07
C3052	H&L Mini Junction Box	85x85	IP55 / IK07



MEMBRANE BOXES

Part Number	Description	Size (mm)	Specification
C3001	Membrane Box (Circle)	70x36	IP55 / IK08
C3002	Membrane Box	80x80x36	IP55 / IK08
C3003	Membrane Box	100x100x45	IP55 / IK08
C3011	Membrane Box	100x100x55	IP55 / IK08



SEALED BOXES

Part Number	Description	Size (mm)	Specification
C3062	Sealed Box	80x80x36	IP55 / IK08
C3063	Sealed Box	100x100x45	IP55 / IK08



SEALED SCREW LID BOXES

Part Number	Description	Size (mm)	Specification
C3071	Sealed Box	100x100x55	IP55 / IK08
C3072	Sealed Box	153x110x63	IP55 / IK08
C3073	Sealed Box	160x135x83	IP55 / IK08
C3074	Sealed Box	220x170x85	P55 / IK08



GRP MAGNA ENCLOSURES (c/w wall mounting kit)

Part Number	Description	Size (mm)	Specification
C39123	Magna Enclosure	280x210x130	IP65 / IK08
C39134	Magna Enclosure	400x300x165	IP65 / IK08
C39145	Magna Enclosure	500x400x175	IP65 / IK08
C39146	Magna Enclosure	600x400x200	IP65 / IK08
C39157	Magna Enclosure	700x500x245	IP65 IK08
C39168	Magna Enclosure	800x600x260	IP65 IK08



GARAGE UNITS

Part Number	Description	Size (mm)	Specification
C3902-T	4 MOD Enclosure	170x100x105	IP65 / IK08
C3908-T	8 MOD Enclosure	217x235x105	IP65 / IK08

Plastic Enclosures

Brand new
products from CTC

NEW



CJB-222 JUNCTION BOX

110x 110x 67mm junction box complete with 222 piano connectors, seals and bushes.

M20 and M25 knockouts as standard.



CJB-WIS JUNCTION BOX

80x80x52mm junction box.

Empty with soft M20 inlet membranes including rear entry.



CTERM-WIS TERMINAL BLOCK

Terminal Block to suit CJB-WIS
(sold separately).

CABLE JOINTING continued

Plugs, Couplers, Sockets, Splitters & Isolators

Part Number	Amp	Pins	Voltage	IP	Description
C13100	16	3P	110	44	Plug
C13200	16	3P	240	44	Plug
C13300	16	4P	415	44	Plug
C13301	16	5P	415	44	Plug



Part Number	Amp	Pins	Voltage	IP	Description
C23100	16	3P	110	44	Coupler/Connector
C23200	16	3P	240	44	Coupler/Connector
C23300	16	4P	415	44	Coupler/Connector
C23301	16	5P	415	44	Coupler/Connector



Part Number	Amp	Pins	Voltage	IP	Description
C23130	16	3P	110	44	Panel Mounted Socket
C23230	16	3P	240	44	Panel Mounted Socket
C23330	16	4P	415	44	Panel Mounted Socket
C23331	16	5P	415	44	Panel Mounted Socket



Part Number	Amp	Pins	Voltage	IP	Description
C23190	16	3P	110	44	Surface Socket
C23290	16	3P	240	44	Surface Socket
C23390	16	4P	415	44	Surface Socket
C23391	16	5P	415	44	Surface Socket



Part Number	Amp	Pins	Voltage	IP	Description
C3214G4	16	3P	110	44	Horizontal Switch Socket
C3214B6	16	3P	240	44	Horizontal Switch Socket
C3314R6	16	4P	415	44	Horizontal Switch Socket
C3414R6	16	5P	415	44	Horizontal Switch Socket



CABLE JOINTING continued

Plugs, Couplers, Sockets, Splitters & Isolators continued

Part Number	Amp	Pins	Voltage	IP	Description
C13102	32	3P	110	44	Plug
C13203	32	3P	240	44	Plug
C13302	32	4P	415	44	Plug
C13303	32	5P	415	44	Plug



Part Number	Amp	Pins	Voltage	IP	Description
C23102	32	3P	110	44	Coupler/Connector
C23203	32	3P	240	44	Coupler/Connector
C23302	32	4P	415	44	Coupler/Connector
C23303	32	5P	415	44	Coupler/Connector



Part Number	Amp	Pins	Voltage	IP	Description
C23132	32	3P	110	44	Panel Mounted Socket
C23233	32	3P	240	44	Panel Mounted Socket
C23332	32	4P	415	44	Panel Mounted Socket
C23333	32	5P	415	44	Panel Mounted Socket



Part Number	Amp	Pins	Voltage	IP	Description
C23192	32	3P	110	44	Surface Socket
C23292	32	3P	240	44	Surface Socket
C23392	32	4P	415	44	Surface Socket
C23393	32	5P	415	44	Surface Socket



Part Number	Amp	Pins	Voltage	IP	Description
C3234G4	32	3P	110	44	Horizontal Switch Socket
C3234B6	32	3P	240	44	Horizontal Switch Socket
C3334R6	32	4P	415	44	Horizontal Switch Socket
C3434R6	32	5P	415	44	Horizontal Switch Socket



Part Number	Amp	Pins	Voltage	IP	Description
C1401A	16	3P	110	44	3 Way Splitter
C1402A	16	3P	240	44	3 Way Splitter



CABLE JOINTING continued

Plugs, Couplers, Sockets, Splitters & Isolators continued

Part Number	Amp	Pins	Voltage	IP	Description
C14100	16	3P	110	67	Plug
C14200	16	3P	240	67	Plug
C14300	16	4P	415	67	Plug
C14301	16	5P	415	67	Plug



Part Number	Amp	Pins	Voltage	IP	Description
C24100	16	3P	110	67	Coupler/Connector
C24200	16	3P	240	67	Coupler/Connector
C24300	16	4P	415	67	Coupler/Connector
C24301	16	5P	415	67	Coupler/Connector



Part Number	Amp	Pins	Voltage	IP	Description
C24190	16	3P	110	67	Surface Socket
C24290	16	3P	240	67	Surface Socket
C24390	16	4P	415	67	Surface Socket
C24391	16	5P	415	67	Surface Socket



Part Number	Amp	Pins	Voltage	IP	Description
C14102	32	3P	110	67	Plug
C14203	32	3P	240	67	Plug
C14302	32	4P	415	67	Plug
C14303	32	5P	415	67	Plug



Part Number	Amp	Pins	Voltage	IP	Description
C24102	32	3P	110	67	Coupler/Connector
C24203	32	3P	240	67	Coupler/Connector
C24302	32	4P	415	67	Coupler/Connector
C24303	32	5P	415	67	Coupler/Connector



Part Number	Amp	Pins	Voltage	IP	Description
C24192	32	3P	110	67	Surface Socket
C24292	32	3P	240	67	Surface Socket
C24392	32	4P	415	67	Surface Socket
C24393	32	5P	415	67	Surface Socket



CABLE JOINTING continued

Plugs, Couplers, Sockets, Splitters & Isolators continued

Part Number	Amp	Pins	Voltage	IP	Description
C9155	63	2P+E	110	67	Plug
C9159	63	2P+E	240	67	Plug
C14304	63	3P+E	415	67	Plug
C14305	63	3P+N+E	415	67	Plug



Part Number	Amp	Pins	Voltage	IP	Description
C9055	63	2P+E	110	67	Coupler/Connector
C9059	63	2P+E	240	67	Coupler/Connector
C24304	63	3P+E	415	67	Coupler/Connector
C24305	63	3P+N+E	415	67	Coupler/Connector



Part Number	Amp	Pins	Voltage	IP	Description
C1259	63	2P+E	110	67	Surface Socket
C1263	63	2P+E	240	67	Surface Socket
C24394	63	3P+E	415	67	Surface Socket
C24395	63	3P+N+E	415	67	Surface Socket



Part Number	Amp	Pins	Voltage	IP	Description
C16263G4D	63	2P+E	110	67	Interlock Switch Socket
C16263B6D	63	2P+E	240	67	Interlock Switch Socket
C16363R6D	63	3P+E	415	67	Interlock Switch Socket
C16463R6D	63	3P+N+E	415	67	Interlock Switch Socket



Part Number	Amp	Pins	Voltage	IP	Description
C163214B6R	16	3P	240	44	RCD Switched Socket
C163414R6R	16	5P	415	44	RCD Switched Socket
C163234B6R	32	3P	240	44	RCD Switched Socket
C163434R6R	32	5P	415	44	RCD Switched Socket



INSULATION

Heatshrink Sleeves

HEATSHRINK SLEEVING

Cable Termination Components Heatshrink sleeving is available in Black, Clear, Blue, Brown, Grey, Yellow, White, Green, Red and Green/Yellow. Please specify which colour you require when ordering. We can supply on a roll or cut to length required. Our heatshrink has a continuous operating temperature of -55°C to 125°C and is flame retardant, UL Approved. Adhesive lined medium wall heatshrink and endcaps are also available ex stock.



Part Number	Inside Diameter (mm) (before shrinking)	Inside Diameter (mm) (after shrinking)
HS1.2	1.2	0.6
HS1.6	1.6	0.8
HS2.4	2.4	1.2
HS3.2	3.2	1.6
HS4.8	4.8	2.4
HS6.4	6.4	3.2
HS9.5	9.5	4.7
HS12	12.7	6.4
HS19	19.1	9.5
HS25	25.4	12.7
HS38	38.1	19.0
HS50	50.8	25.4
HS75	76.2	38.1
HS101	101.6	50.8

HS SLEEVING LAYFLAT DIMENSIONS

HS Size	Dimensions (mm)
3.2	5
4.8	8
6.4	11
9.5	17
12.7	21
19	31
25	44
38	60
50	83
75	128
100	160

NB all dimensions stated are nominal

HEATSHRINK PACKS

Part Number	Length (mm)
HSP6	6.4 - 3.2
HSP9.5	9.5 - 4.7
HSP12	12.7 - 6.4
HSP19	19.1 - 9.5
HSP25	25.4 - 12.7
HSP38	38.1 - 19.0



HEATSHRINK GUNS

Part Number	Voltage
HSG110V	110V
HSG240V	240V



HEATSHRINK BOXES

Available in Red, Yellow, Blue, Green/Yellow, Black, Grey, White, Clear and Brown.

Part Number	Box Quantity
HSB1.2	15m
HSB1.6	15m
HSB2.4	11m
HSB3.2	11m
HSB4.8	10m
HSB6.4	9m
HSB9.5	7m
HSB12	6m
HSB19	5m
HSB25	3.5m

INSULATION continued

Heatshrink Sleeves continued

DUAL WALLED ADHESIVE LINED 1.2m length.

Part Number	Inside Diameter (mm) (before shrinking)	Inside Diameter (mm) (after shrinking)
DW48	4.8	1.6
DW64	6.4	2.2
DW95	9.5	3.2
DW12	12.7	4.2
DW19	19.1	6.3
DW25	25.4	8.5
DW38	38.0	13.5



MANUFACTURED
IN THE UK



Insulation Sleeving

PVC SLEEVING

Supplied in a wide range of colours and sizes. Alternative diameters and wall thicknesses also available. Ideal for cable or harnessing covering. Coil size 100 metres. Nominal wall thickness 0.5mm.



Part Number	Reel Part Number	Inside Dia (mm)
PVC1.5*	N/A	1.5
PVC2*	PVC2*-REEL	2.0
PVC3*	PVC3*-REEL	3.0
PVC4*	PVC4*-REEL	4.0
PVC5*	N/A	5.0
PVC6*	N/A	6.0
PVC8*	N/A	8.0
PVC10*	N/A	10.0
PVC12*	N/A	12.0

* Suffix Part Number with the colour required e.g. green/yellow = PVC3G/Y.

Available in Red (RED), Yellow (YEL), Blue (BLU), Green/Yellow (G/Y), Black (BLK), Grey (GRY), White (WHI) and Brown (BRO).

PVC OVER SLEEVING MULTI REELS

High quality live, neutral and earth PVC over sleeving supplied on easy to use drums.

Part Number	Description
PVC2DMR	60m G/Y 20m BLU & BRO
PVC3DMR	60m G/Y 20m BLU & BRO
PVC4DMR	40m G/Y 10m BLU & BRO

HEAT RESISTANT SLEEVING

Available in Black, White, Blue, Brown and Red. Coil size 25 metres.

Part Number	Bore Size (mm)
HRS4	4
HRS6	6
HRS8	8
HRS10	10
HRS12	12
HRS16	16



CABLE MANAGEMENT

Spiral Wrap

Provides a fast, flexible and simple method of binding and protecting cables. Coil size 25 metres.

Part Number	Diameter (mm)
SW6	7-40
SW9	12-50
SW12	15-80
SW20	25-100



Push Back Jacket

Heat stabilised polyester. Available in Grey or Black. Lightweight, flexible screening that provides tough protection for bundles. Working temperature -50°C to +150°C.

Part Number	Diameter (mm)	Box Quantity (m)
PBJ5	5-10	100
PBJ10	8-14	100
PBJ15	12-20	50
PBJ20	18-25	50
PBJ25	22-30	25
PBJ30	26-35	25
PBJ40	35-45	25
PBJ50	45-55	25



Grommet Strip

A flexible grommet strip in Natural. Prevents chafing on panel openings and suitable for plate thicknesses from 1.0-6.5mm. Coil size 25 metres.

Part Number	Plate Thickness (mm)
GS2	1.0-1.1
GS3	1.5-2.1
GS4	2.5-3.3
GS5	4.0-4.9
GS6	4.5-6.5



Flexible Conduit

CONTRACTOR PACKS

Polypropylene packs available in black or white in 16mm, 20mm, 25mm and 32mm. Supplied in 10m pack complete with glands.

PVC metal lined contractor packs available in 20mm, 25mm and 32mm supplied in 10m pack c/w fixed or swivel glands.

Part Number	Size (mm)	Type	Coil Size (m)
CPM16	16	Polypropylene	10
CPM20	20	Polypropylene	10
CPM25	25	Polypropylene	10
CPM32	32	Polypropylene	10
CPM20 PVC MET	20	PVC metal lined	10
CPM25 PVC MET	25	PVC metal lined	10
CPM32/MET/PVC	32	PVC metal lined	10
CPM20/GALV	20	Galv only	10
CPM25/GALV	25	Galv only	10
CPM32/GALV	32	Galv only	5



FLEXIBLE CONDUIT COILS

Polypropylene packs available in black or white in 16mm, 20mm, coils available in black and white in 16mm - 50mm in any coil size to suit.

Plain galvanised and PVC metal lined coils available in 10mm - 100mm supplied in 50m, 30m, 20m and 10m coils.

Part Number	Size (mm)	Description	Coil Size (m)
FCM20-100M	20	Polypropylene	100
FCM25-50M	25	Polypropylene	50
FCM32-50M	32	Polypropylene	50
FCM40-25M	40	Polypropylene	25
FCM50-25M	50	Polypropylene	25
FCM20PVC/MET/50M	20	PVC metal lined	50
FCM25PVC/MET/50M	25	PVC metal lined	50
FCM25PVC/MET/25M	25	PVC metal lined	25
FCM32PVC/MET/25M	32	PVC metal lined	25
FCM20/GALV/50M	20	Galv only	50
FCM25/GALV/25M	25	Galv only	25



TWIN WALL BURIAL CONDUIT COILS

50 metre coils.

Part Number	Size (mm)
BC40 BLK	40
BC50 BLK	50
BC63 BLK	63
BC110 BLK	110
BC160 BLK	160



CABLE MANAGEMENT continued

Flexible Conduit Accessories



FLEXIBLE CONDUIT ACCESSORIES

Metal and PVC glands available in either fixed or swivel type: 16mm - 50mm.



RUBBER LINED & PLASTIC P-CLIPS

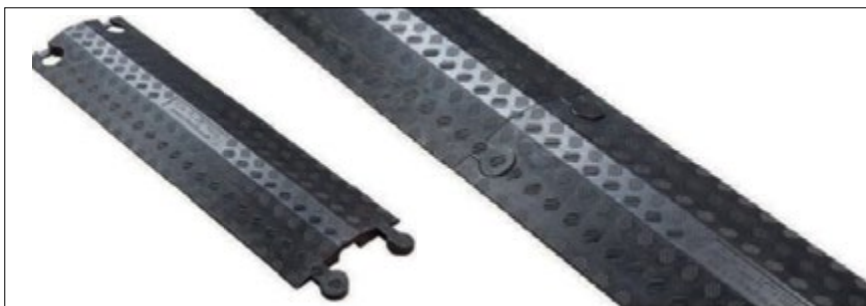
Rubber lined and plastic P Clips for use with all conduits 12mm - 63mm.



ELBOWS

FCEM20 and FCEM25.

Cable Protectors



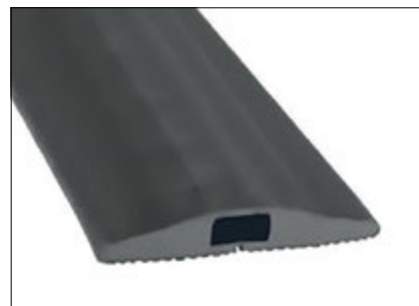
CTCP-45X20HD RIGID CABLE PROTECTOR

Suitable for 11.5 axle weight which is the heaviest loads permitted on roads in the United Kingdom.

Other sizes and styles available upon request.



Inner channel: 45mm (W) x 20mm (H)



CABPRO16X8 FLEXIBLE VINYL CABLE PROTECTOR

Prevents accidents in office areas caused by loose cables.

Other sizes and styles available upon request.



CALL

01453 821798



EMAIL

sales@ctcukltd

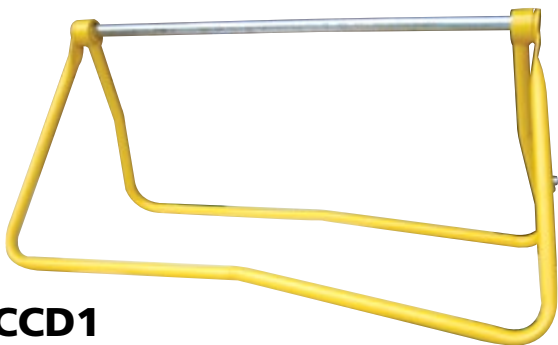


FAX

01453 823736

Free UK mainland delivery on orders over £100.

Cable Dispensers, Rotators & Rollers



**CCD1
CABLE DISPENSER**



**CDR2
CABLE DRUM
ROTATORS**



**CDR3
CABLE DRUM
ROTATORS**



**CJ3
3 TONNE
CABLE JACKS**

**CJ6
6 TONNE
CABLE JACKS**



**TRP125
CABLE ROLLERS**



**CDS1
CABLE STAND**

CABLE SOCKS Single Eye Pulling Socks

Part Number	Cable Size (mm)
CS13 - 19	13 - 19mm
CS19 - 25	19 - 25mm
CS25 - 38	25 - 38mm
CS38 - 50	38 - 50mm
CS50 - 63	50 - 63mm



TOMCAT PIPE LOCATOR

The Tomcat kit is an industry standard cable avoidance or cable location kit comprising of the 33 KHz Tomcat Cable Locator and the 33 KHz Signal Generator that provides the complete solution for location and avoidance of underground utilities.



HIRE TOOLING

CTC offer a full range of hire tooling which includes cable jacks, cable rollers, hydraulic crimpers and hydraulic armoured cable cutters.

CABLE GLANDS & ACCESSORIES

Dome Top Glands / IP68

Part Number Metric	Cable Range mm Min / Max
DTGM12	3 – 6.5
DTGM16	4 – 8
DTGM20S	6 – 12
DTGM20L	10 – 14
DTGM25	13 – 18
DTGM32	14 – 21
DTGM40	22 – 32
DTGM50	32 – 38
DTGM63	37 – 44



Available in Dark Grey, Light Grey, White, Blue, Red & Black. Please specify colour required when ordering.

Part Number	Cable Range mm Min / Max
DTGPG7	3 – 6.5
DTGPG9	4 – 8
DTGPG11	5 – 10
DTGPG13.5	6 – 12
DTGPG16	10 – 14
DTGPG21	13 – 18
DTGPG29	18 – 25
DTGPG36	22 – 32
DTGPG42	30 – 38
DTGPG48	34 – 44

EEXE Glands available on request

EMC Glands available on request



Entry Thread Washers



For use at the gland interface to maintain the IP rating of the equipment and gland.

Nylon

Fibre

Part Number Nylon	Part Number Fibre	To fit Thread Size
M16NW	M16FW	M16
M20NW	M20FW	M20
M25NW	M25FW	M25
M32NW	M32FW	M32
M40NW	M40FW	M40
M50NW	M50FW	M50
M63NW	M63FW	M63
M75NW	M75FW	M75

Serrated 'Shakeproof' Washers



For use on cable gland entry threads to dampen vibrations and avoid loosening of the cable gland or locknut. Made from mild steel with internal serrations. Manufactured to thread specification Isometric (ISO) to BS3543:1981.

Zinc plated and stainless steel available to order.

Part Number	To fit Thread Size
M20SW	M20
M25SW	M25
M32SW	M32
M40SW	M40
M50SW	M50
M63SW	M63

Brass Cable Gland Packs

BW GLANDS



Part Number
BW20SPK
BW20PK
BW25PK
BW32PK
BW40PK
BW50SPK
BW50PK
BW63SPK
BW63PK
BW75SPK
BW75PK
BW90PK

CW GLANDS



Part Number
CW20SPK
CW20PK
CW25PK
CW32PK
CW40PK
CW50SPK
CW50PK
CW63SPK
CW63PK
CW75SPK
CW75PK

A2 GLANDS



Part Number
A2/20SPK
A2/20PK
A2/25PK
A2/32PK
A2/40PK
A2/50SPK
A2/50PK
A2/63SPK
A2/63PK

EIW GLANDS



Part Number
EIW20SPK
EIW20PK
EIW25PK
EIW32PK
EIW40PK
EIW50PK
EIW63PK

CTX GLANDS



Part Number
CTX20SPK
CTX20PK
CTX25PK
CTX32PK
CTX40PK
CTX50SPK
CTX50PK

ALUMINIUM GLANDS



Part Number
CW25ALI-PK
CW32ALI-PK
CW40ALI-PK
CW50SALI-PK
CW50ALI-PK
CW63ALI-PK

EIFW GLANDS



Part Number
EIFW20/16PK
EIFW20SPK
EIFW20PK
EIFW25PK
EIFW32PK
EIFW40PK
EIFW50PK
EIFW63PK
EIFW75PK

LSF PACKS



All glands are available as LSF.

PLEASE REFER TO SIZING CHARTS ON PAGES 62 & 63

Consumer Unit Glands

Part Number	Description
CFFK2/1.5N	M20 Nylon Flat Form Gland Kit 2 x 1.0-1.5mm ²
CFFK1/2.5N	M20 Nylon Flat Form Gland Kit 1 x 2.5-4mm ²
CFFK2/2.5N	M25 Nylon Flat Form Gland Kit 2 x 2.5-4.0mm ²
CFFK1/4.0N	M25 Nylon Flat Form Gland Kit 1 x 4.0mm ²
CFFK1/6.0N	M25 Nylon Flat Form Gland Kit 1 x 6.0mm ²
CFFK1/10.0N	M25 Nylon Flat Form Gland Kit 1 x 10.0mm ²
CFFK1/16.0N	M32 Nylon Flat Form Gland Kit 1 x 16.0mm ²
CFFK2/1.5NP	M20 Brass NP Flat Form Gland Kit 2 x 1.0-1.5mm ²
CFFK1/2.5NP	M20 Brass NP Flat Form Gland Kit 1 x 2.5-4.0mm ²
CFFK2/2.5NP	M25 Brass NP Flat Form Gland Kit 2 x 2.5-4.0mm ²
CFFK1/4.0NP	M25 Brass NP Flat Form Gland Kit 1 x 4.0mm ²
CFFK1/6.0NP	M25 Brass NP Flat Form Gland Kit 1 x 6.0mm ²
CFFK1/10.0NP	M25 Brass NP Flat Form Gland Kit 1 x 10.0mm ²
CFFK1/16NP	M32 Brass NP Flat Form Gland Kit 1 x 16.0mm ²
CMTK3/16N	M32 Nylon Tail Kit Gland 2 x 16mm ² + 1 x 10.0mm ²
CMTK3/25N	M32 Nylon Tail Kit Gland 2 x 25mm ² + 1 x 16mm ²
CMTK3/16NP	M32 Brass NP Tail Kit Gland 2 x 16mm ² + 1 x 10.0mm ²
CMTK3/25NP	M32 Brass NP Tail Kit Gland 2 x 25mm ² + 1 x 16mm ²
CMTK316N	M32 Nylon Tail Kit Gland 3 x 16mm ²
CMTK22516N	M40 Nylon Tail Kit Gland 2 x 25mm ² + 1 x 16mm ²
CMTK4/25N	M50 Nylon Tail Kit Gland 4 x 25mm ² + 1 x 16mm ²
MG-KIT	Membrane grommet kit c/w 8x20mm, 3x25mm, 3x32mm



Grommets sold individually upon request.

Cable Gland Sizing Charts

XLPE / PVC / SWA – BS 4567

Conductor Size (mm ²)	No. of Cores	Approx Dia (mm)	Cable Gland Reference			
			BW	CW	E1W	E1FW
1.5	2	12.3	20S	20/16	20/16	20/16
	3	12.8				
	4	14.0				
	5	14.2				
	6	15.2				
2.5	2	13.6	20S	20S	20S	20S
	3	13.6	20	20	20	20
	4	14.7				
	5	16.3				
	6	17.1				
4	2	14.7	20	20S	20S	20S
	3	15.3	20	20	20	20
	4	16.4				
6	2	15.9	20	20	20	20S
	3	16.6				20
	4	18.7				20
10	2	18.0	20	20	20	20
	3	18.9			25	
	4	20.3			25	
16	2	20.0	25	25	20	20
	3	21.2			25	25
	4	22.9			25	25
25	2	24.1	25	25	25	25
	3	26.7	32	32	25	25
	4	28.9			32	32
35	2	27.9	32	32	32	32
	3	29.9				
	4	32.1				
50	2	25.8	25	25	25	25
	3	28.5	32	32	32	32
	4	32.0				
70	2	29.0	32	32	32	32
	3	32.2				
	4	37.7				
95	2	29.0	32	32	32	32
	3	37.0	40	40	40	40
	4	41.7	50S	50S	50S	40
120	2	36.1	40	40	40	40
	3	40.4			50S	
	4	47.1			50	

CABLE GLANDS & ACCESSORIES continued

Cable Gland Sizing Charts continued

XLPE / PVC / SWA – BS 4567 continued

Conductor Size (mm ²)	No. of Cores	Approx Dia (mm)	Cable Gland Reference			
			BW	CW	E1W	E1FW
150	2	39.3	40	40	40	40
	3	45.5	50	50	50S	50
	4	51.4			50	
185	2	44.7	50S	50S	50S	50
	3	49.8	50	50	50	
	4	56.6	63S	63S	63S	63
240	2	49.0	50	50	50	50
	3	55.1	63S	63S	63S	63
	4	63.0	63	63	63	
300	2	53.5	63S	63S	63S	63
	3	60.2	63	63	63	
	4	68.8	75S	75S	75S	75
400	2	59.0	63S	63S	63	63
	3	66.6	75S	75S	75S	75
	4	78.1	90	90	75	

Due to cable diameter variances between manufacturers, we strongly recommend that the cable diameter is checked where possible, prior to purchasing the products.

CTC Gland sizing charts are a guide only.

XLPE / PVC / AWA - PVC BS5467 (Copper core - aluminium armour)

Cable Size (mm ²)	Nominal Gland Dia (mm)	Cable Gland Reference
50	17.5	CW20AL - PK
70	20.2	CW20AL - PK
95	22.3	CW25AL - PK
120	24.2	CW25AL - PK
150	27.4	CW32AL - PK
185	30.0	CW32AL - PK
240	32.8	CW32AL - PK
300	35.6	CW40AL - PK
400	40.4	CW50SAL - PK
500	44.2	CW50SAL - PK
630	48.8	CW50AL - PK
800	55.4	CW63SAL - PK
1000	60.6	CW63AL - PK

CABLE GLANDS & ACCESSORIES continued

Cable Gland Sizing Charts continued

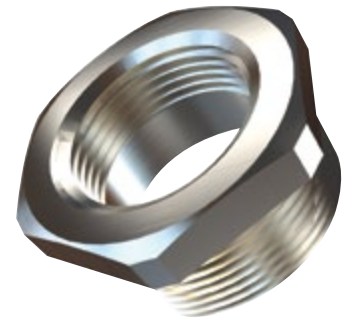
SY CABLE GLANDS

No. of Cores	Conductor Cross Section Area (mm ²)	Cable Cross Section Area (mm ²)	Overall Diameter (mm)	Gland Size	Cleat Size
2	0.75	40.72	7.2	20s	3
2	1.0	45.36	7.6	20s	3
2	1.5	55.42	8.4	20s	4
2	2.5		9.8	20s	4
3	0.75	44.18	7.5	20s	3
3	1.0	49.02	7.9	20s	4
3	1.5	60.82	8.8	20	4
3	2.5	83.32	10.3	20s	5
3	4.0	111.22	11.9	20	5
3	6.0	149.57	13.8	20	6
3	10.0	221.67	16.8	25	7
3	16.0	307.90	19.8	32	8
3	25.0	459.96	24.2	40	10
3	35.0	543.25	26.3	40	11
4	0.75	51.53	8.1	20s	4
4	1.0	59.45	8.7	20s	4
4	1.5	69.40	9.4	20s	4
4	2.5	96.77	11.1	20	5
4	4.0	130.70	12.9	20	6
4	6.0	176.71	15.0	25	6
4	10.0	263.02	18.3	32	8
4	16.0	376.68	21.9	32	8
4	25.0	547.40	26.4	40	11
4	35.0	716.31	30.2	40	12
4	50.0	924.01	34.3	50	14
4	70.0	1164.16	38.5	50	16
4	95.0	1452.20	43.0	63	18
5	0.75	62.21	8.9	20s	4
5	1.0	69.40	9.4	20s	4
5	1.5	84.95	10.4	20s	5
5	2.5	116.90	12.2	20	5
5	4.0	151.75	13.9	25	6
5	6.0	213.82	16.0	25	7
5	10.0	314.16	20.0	32	8
5	16.0	448.63	23.9	32	10
5	25.0	651.44	28.8	40	12
5	35.0	839.82	32.7	50	14
7	0.75	70.88	9.5	20s	4
7	1.0	84.95	10.4	20s	5
7	1.5	107.51	11.7	20	5
7	2.5	143.14	13.5	20	6
12	0.75	132.73	13.0	20	6
12	1.0	136.85	13.2	20	6
12	1.5	179.08	15.1	25	6
12	2.5	243.28	17.6	25	7
18	0.75	176.71	15.0	25	6
18	1.0	198.56	15.9	25	7
18	1.5	243.29	17.6	25	8
18	2.5	333.29	20.6	32	9

CABLE GLANDS & ACCESSORIES continued

Brass Reducers

Brass nickel plated, IP66 if fitted with sealing washer.



Part Number	Male	Female	Min Male Thread Length
M16MXM12F	M16	M12	10
M20MXM16F	M20	M16	13
M25MXM16F	M25	M16	13
M25MXM20F	M25	M20	13
M32MXM20F	M32	M20	13
M32MXM25F	M32	M25	13
M40MXM20F	M40	M20	13
M40MXM25F	M40	M25	13
M40MXM32F	M40	M32	13
M50MXM20F	M50	M20	13
M50MXM25F	M50	M25	13
M50MXM32F	M50	M32	13
M50MXM40F	M50	M40	13
M63MXM20F	M63	M20	13
M63MXM25F	M63	M25	13
M63MXM32F	M63	M32	13
M63MXM40F	M63	M40	13
M63MXM50F	M63	M50	13
M75MXM63F	M75	M63	13

Brass Adaptors

Brass nickel plated, IP66 if fitted with sealing washer.



Part Number	Male	Female	Min Male Thread Length
M16MXM20F	M16	M20	13
M20MXM25F	M20	M25	13
M25MXM32F	M25	M32	13
M32MXM40F	M32	M40	13
M40MXM50F	M40	M50	13
M50MXM63F	M50	M63	13
M63MXM75F	M63	M75	13

NYLON AND BRASS STOP PLUGS AVAILABLE ON REQUEST

FIRE SAFETY PRODUCTS

Fire Safe Clips to BS5839-1

Supplied in packs of 25.

Part Number	Description
FSC25	To fit trunking up to 30mm wide
FSC40	To fit trunking up to 40mm wide
FSC50	To fit trunking up to 50mm wide



316 Stainless Steel Cable Tie Base

Supplied in packs of 25.

Part Number	Description
SSTB4	316 Stainless Steel Cable Tie Base with M4 Fixing Hole
SSTB6	316 Stainless Steel Cable Tie Base with M6 Fixing Hole



Concrete Direct Screws

Supplied in packs of 25.

Part Number	Description
CDS4.8X45	Concrete Direct Fixing Screws



Metal Saddles

Part Number	Description
SBSM20W	20mm White Metal Saddle
SBSM25W	25mm White Metal Saddle
SBSM20B	20mm Black Metal Saddle
SBSM25B	25mm Black Metal Saddle



Fire Safe Fixing Kit

Part Number	Description
FSFK	25 x SST200-4.6 Stainless Steel Cable Ties 25 x SSTB6 Stainless Steel Cable Tie Bases 25 x CDS4.8X45 Concrete Direct Fixing Screws



FIRE SAFETY PRODUCTS

Metal Cable Ties

STAINLESS STEEL CABLE TIES (Roller Ball Type)

316 Stainless Steel Cable Ties are ideal for use in hazardous environments, flame retardant with a high tensile strength. UL E227552, DNV E-6729. These are available in plain stainless steel or colour coated. Pack of 100.



Part Number	Length (mm)	Width (mm)
SST150-4.6	150	4.6
SST200-4.6	200	4.6
SST300-4.6	300	4.6
SST360-4.6	360	4.6
SST520-4.6	520	4.6
SST200-7.9	200	7.9
SST300-7.9	300	7.9
SST360-7.9	360	7.9
SST520-7.9	520	7.9
SST1200-4.6	1200	4.6



Metal Dowel Fastening Nail

MFD521 METAL DOWEL FASTENING NAIL

Fits a 6mm Drill Hole. Fire resistant tested up to 120 min. Fasten at the push of a thumb



Fire Kit Box

E18FIRE-KIT

Contents:

- 1 x large robust box
- 1 x CT1-SST tensioner
- 200 x 200mm stainless steel ties
- 50 stainless cable tie bases
- 50 x FSC25 fire safe clips
- 50 x ILCR608RED Linian Clips
- 5 of each 20mm and 25mm metal saddles
- 50 x concrete direct screws

Also available:

E18FIRE-KIT(NOTOOL) as above without tool

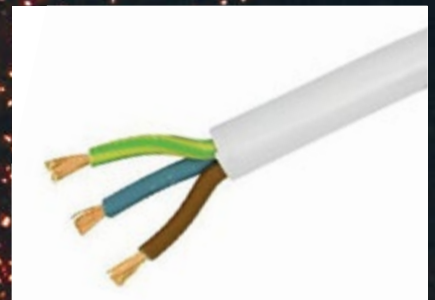


New products designed to comply with the new BS7671:2015 amendments

Firesafe P Clip Range



Suitable for Steel Wired Armoured, Flexible Cables and Flexible Conduit



Supplied in packs of 100.

Part Number	Description
FSPC5	4-5mm Firesafe P clip
FSPC6	5-6mm Firesafe P Clip
FSPC8	6-8mm Firesafe P Clip
FSPC10	8-10mm Firesafe P Clip
FSPC13	10-13mm Firesafe P Clip
FSPC16	13-16mm Firesafe P clip
FSPC19	16-19mm Firesafe P Clip
FSPC21	19-21mm Firesafe P Clip
FSPC25	21-25mm Firesafe P Clip
FSPC29	25-29mm Firesafe P Clip
FSPC35	29-35mm Firesafe P Clip
FSPC40	35-40mm Firesafe P Clip
FSPC50	40-50mm Firesafe P Clip

**SOLUTIONS FOR
18th EDITION**

MICC Accessories



RPSL & RPS POTS & SEALS

RPSL are complete with earth tail RPS – standard.



RGM GLANDS

Mineral insulated glands RGM. For use on mineral insulated cables Zone 1 & 2 BASEFFA Approved ATEX Zones 1 & 2 EEXD.



RZP/RZE SLEEVING

Available in Red or Black. Sold in 3 metre packs.



RHG SHROUDS

Available in 20mm, 25mm & 32mm. Suitable for use with RGM glands. Pack quantity 10.

Shroud Part No.	Cable Size	Gland Part No.	Standard Type Plain Seals Part No.	Earth Tail Seals Part No.
RHG20	2L1.0	RM2L1.0	RPS2L1.0	RPSL2L1.0
RHG20	2L1.5	RM2L1.5	RPS2L1.5	RPSL2L1.5
RHG20	2L2.5	RM2L2.5	RPS2L2.5	RPSL2L2.5
RHG20	3L1.0	RM3L1.0	RPS3L1.0	RPSL3L1.0
RHG20	3L1.5	RM3L1.5	RPS3L1.5	RPSL3L1.5
RHG20	4L1.0	RM4L1.0	RPS4L1.0	RPSL4L1.0
RHG20	4L1.5	RM4L1.5	RPS4L1.5	RPSL4L1.5



MICC/FP200 CLIPS

Available in single P clip or 2 way saddle, LSF coated or bare copper.



Coated Single Clips	Bare	Cable range mm	Prysmian Equiv.	RSFL Saddle
RCHL26	RC26	6.5 - 6.9	AP6	272
RCHL28	RC28	7.0 - 7.4	AP7	302
RCHL30	RC30	7.5 - 7.9	AP8	342
RCHL32	RC32	8.0 - 8.4	AP8	342
RCHL34	RC34	8.5 - 9.0	AP9	342
RCHL37	RC37	9.1 - 10.0	AP9	382
RCHL40	RC40	10.1 - 10.7	AP10	422
RCHL43	RC43	10.8 - 11.7	AP11	502
RCHL47	RC47	11.8 - 12.7	AP12	542
RCHL51	RC51	12.8 - 14.0	AP13	632

Colours: Red, White, Black, Orange and Bare Copper. Other sizes available to order. Please note the cable O/D size will determine the best fit.

MICC Tooling



ZRC ROTARY CUTTING TOOL

Used to cut copper sheath at desired point.



ZPC20 CAPPING TOOL



ZPT20 POTTING TOOL

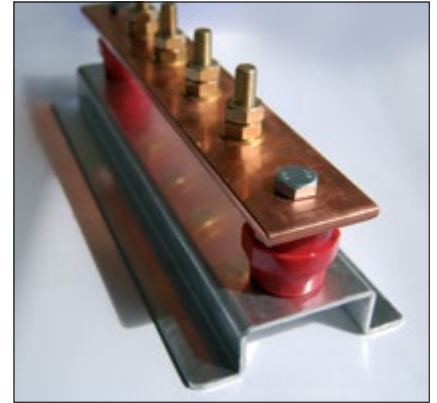


JS1 JOY STRIPPER

EARTHING COMPONENTS & ACCESSORIES

CTC Earth Bars

CTC offer a bespoke service for Earth Bars and can manufacture any size or style of Earth Bar required.



PLAIN EARTH BARS

Part Number	Number of Studs	Insulators	Overall Length (mm)
EBC004	4 x M10	2	205
EBC006	6 X M10	2	275
EBC008	8 X M10	2	345
EBC010	10 X M10	3	415
EBC012	12 X M10	3	485

SINGLE LINK EARTH BARS

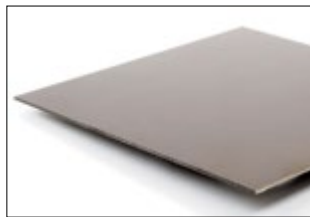
Part Number	Number of Studs	Insulators	Overall Length (mm)
EBC104C/WLINK	4 x M10	4	330
EBC106C/WLINK	6 x M10	4	400
EBC108C/WLINK	8 x M10	4	470
EBC110C/WLINK	10 x M10	4	540
EBC112C/WLINK	12 x M10	5	610

Earthing Accessories



NICKEL PLATED EARTH BLOCKS

Available in 4 – **TB4** and 8 way – **TB8** blocks.



PAXOLINE SHEETS

PAX600 – 600 x 600
PAX1200 – 1200 x 1200

Phenolic paper laminate Paxoline sheet.



12 WAY STRIP CONNECTORS

SC3A SC5A SC15A
SC30A SC60A



EARTHING NUTS

20mm – **M20EN**
25mm – **M25EN**
32mm – **M32EN**



PORCELAIN CONNECTORS

PC5A-1P 5 amp 1 pole	PC15A-1P 15 amp 1 pole	PC30A-1P 30 amp 1 pole
PC5A-2P 5 amp 2 pole	PC15A-2P 15 amp 2 pole	PC30A-2P 30 amp 2 pole
PC5A-3P 5 amp 3 pole	PC15A-3P 15 amp 3 pole	

EARTHING COMPONENTS & ACCESSORIES continued

Earthing Accessories continued



5/8 COUPLER
5/8COUPLER



**5/8 CABLE TO
ROD EARTH
CLAMP EC5/8**



**EARTH ROD
1200MM
ER5/8**



**EARTH ROD
1200MM
ER3/8**



**3/8 CABLE TO
ROD EARTH
CLAMP EC3/8**



**25X3 TAPE CLIP
25X3TP**



**25X3 ROD TO
TAPE CLAMP
25X3RTC**



**25X3 COPPER
TAPE 25X3-C/T**



**25X3 PVC
COATED COPPER
TAPE CLIP
25X3TC-COLOUR**



**INSULATORS
M10-INS**



**5/8 DRIVING
STUD
5/8DRIV-STUD**



**25X3 CROSS
TAPE CLIP
25X3-SQ/CLIP**



**EARTH PIT
PEP1**



**CONCRETE
EARTH PIT CEP1**



**COPPER EARTH
LATTICE LEM600**

TAPES, SEALANTS, LUBRICANTS & AEROSOLS

Tapes



PVC ADHESIVE TAPE

Available in Black, Blue, Brown, Green, Red, White, Yellow and Green/Yellow.

Part Number	Size
19X33	19mm x 33m
25X33	25mm x 33m
50X33	50mm x 33m



ADHESIVE BARRIER TAPE

Part Number	Size
ABT-RED/WHITE	50mm x 33m
ABT-BLK/YELL	50mm x 33m



UNDERGROUND WARNING TAPE

Tracer wire also available.

Part Number	Size
UWT	356m



GAFFER TAPE

Part Number	Size
GTS SILVER	50mm x 50m
GTS BLACK	50mm x 50m



PTFE TAPE 0.076mm thick. WRAS approved BS4375.

Part Number	Size
PTFE	12mm x 12m



ALUMINIUM FOIL TAPE 30 micron thick.

Part Number	Size
AFT48X45	48mm x 45m



SELF AMALGAMATING TAPE

Part Number	Size
CP62	19mm wide



RAPTILE RESCUE EMERGENCY REPAIR TAPE ERT3BLACK ERT3RED ERT3WHITE ERT3CLEAR

TAPES, SEALANTS, LUBRICANTS & AEROSOLS cont

Sealants, Adhesives, Paint etc



CTCMW300
MULTI WIPES Tub 300
CTCMW100
MULTI WIPES Tub 100



CTCHDMW
MONSTER
WIPES
Tub 80



CTCB1
B1 FIRE
RESISTANT
PU FOAM



CTCABR
CHEMICAL
ANCHOR BOND
RESIN SYSTEM



CTCFS4
FS4 ACRYLIC
FIRESHIELD
INTUMESCENT
SEALANT



CTCLN1
LN11 FIRE
SCREEN
SILICONE
SEALANT



CTC-CAULK
DECORATORS
CAULK



CT1-WHITE
CT1-CLEAR
CT1-BLACK
UNIQUE
SEALANT AND
CONSTRUCTION
ADHESIVE
White, Clear or Black



CTC-
MULTISOLVE
SEALANT
AND
ADHESIVE
REMOVER



RMP-1 Red
YMP-1 Yellow
WMP-1 White
BMP-1 Blue
LINE MARKER
PAINT



CTC-CG1
SEALANT GUN

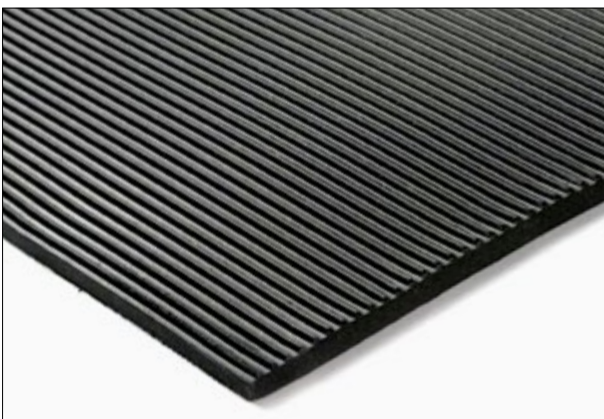
Aerosols



AEROSOLS 400ML

Part Number	Description
GALV-400	Zinc galvanised spray
CPO-400	Clear penetrating oil
ADH-400	Adhesive spray
ECC-400	Electrical contact cleaner
SS-400	Silicone spray
BTS-400	Battery terminal spray
WG-400	White grease with PTFE
CUT-400	Cutting-tapping spray
YEL77	Pulling lubricant
AIR-400	Air duster spray

Rubber Matting



Specification	Working Voltage	Available Finishes	Colour	Thickness	Width
IEC61111 CLASS 0	1000V AC	Smooth/Fine Ribbed/Diamond	Black/Red	4.5mm	0.914m/1m/ 1.22m
IEC61111 CLASS 0	1000V AC	Smooth/Fine Ribbed/Diamond	Black	6mm	0.914m/1m/ 1.22m
IEC61111 CLASS 1	7500V AC	Smooth/Fine Ribbed/Diamond	Black	6mm	0.914m/1m/ 1.22m
IEC61111 CLASS 2	17000V AC	Smooth/Fine Ribbed/Diamond	Black	8mm	0.914m/1m/ 1.22m
IEC61111 CLASS 3	26500V AC	Smooth/Fine Ribbed/Diamond	Black	9.5mm	0.914m/1m/ 1.22m
IEC61111 CLASS 4	36000V AC	Smooth/Fine Ribbed/Diamond	Grey	6.5mm	0.914m/1m/ 1.22m
Tested to 15000V	650V AC	Smooth/Fine Ribbed	Black	9.5mm	0.914m/1m/ 1.22m
Tested to 15000V	450V AC	Smooth/Fine Ribbed	Black	6mm	0.914m/1m/ 1.22m

MISCELLANEOUS

Cable Installation

CABLE RODDING SYSTEM 6MM FERRET

Highest quality 6mm coated fibreglass rod with polypropylene sheath. Brass end fittings with smooth profile brass guiding tip. Rugged steel construction, zinc plated. Integral fully adjustable brake system fitted as standard.

700mm high x 580mm wide x 250mm deep.

Lengths: 30 to 120 metres.

Other sizes available.



Transformers

PORTABLE TOOL TRANSFORMERS

Part Number	Description
TF750/1	750VA 1 x 16 amp socket
TF1000/2	1000VA 2 x 16 amp socket
TF1500/2	1500VA 2 x 16 amp socket
TF2000/2	2000VA 2 x 16 amp socket
TF3000/2	3000VA 2 x 16 amp socket

Inspection Cameras

RIDGID MICRO EXPLORER CA300 INSPECTION CAMERA

Onboard SD for recording video and stills. Comes with 4 super bright LEDs. Easily rotate the active image counter-clockwise to see in any situation.

17mm camera head.

1 metre shaft extendable to 10 metres. 6mm and 9.5mm camera cable available.

Other models available.



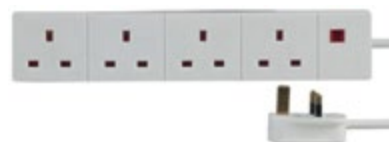
Extension Leads

4EXT-25M 4 GANG EXTENSION REEL 25 metre



4GEXT 4 GANG EXTENSION LEAD

c/w 2 metre flex



Coax & Satellite Connectors

Sold as a kit (TVK1) or as individual packs.



Part Number	Description
MCP10	Male Coax Plugs pk10
FCP10	Female Coax Plugs pk10
MB2B2	Male back to back pk2
FB2B2	Female Back to back pk2
Y-SPLIT2	Y Splitter Plastic Pk2
SFTYPE10	Satellite F Plug pk10
SF2M10	Satellite Female to Male pk10
SFST-SPLIT2	Satellite F type T Splitter pk2
SM2F10	Satellite Male to Female pk10
SFFC10	Satellite F Female connector Pk10
TVK1	10 piece Coax Kit (pictured)

HDMI Leads



Part Number	Description
HDMI3	3 metre HDMI lead
HDMI5	5 metre HDMI Lead
HDMI10	10 metre HDMI Lead

MISCELLANEOUS

Health & Safety Products

CFAB3 – FIRST AID KIT for up to 20-people



CFAB15 – BURNS KIT



CFAB13 – EYE WASH STATION (Wall Mounted)



HIVIS HI-VIS WAISTCOAT

Large/XL



BLUE ROLL



RUBBLE SACKS



CTC PROFILES

CTC Fire Rated Sealants and Trade Wipes Profile

Qty	CTC Part Number
2	CTCMW300 Multi Wipes
3	CTCMW100 Multi Wipes
3	CTCHDMW Monster Wipes
4	CTCB1-Firefoam
10	CTCABR Anchor Resin
12	CTCFS4 Acrylic Fireshield
12	CTCLN1 Fire Screen
12	CTC-CAULK Decorators Caulk
6	CT1-Black
6	CT1-Clear
6	CT1-White
1	Display Stand



Firesafe P Clip Range Profile

Qty	CTC	Description
100	FSPC5	4-5mm Firesafe P clip
100	FSPC6	5-6mm Firesafe P Clip
100	FSPC8	6-8mm Firesafe P Clip
100	FSPC10	8-10mm Firesafe P Clip
100	FSPC13	10-13mm Firesafe P Clip
100	FSPC16	13-16mm Firesafe P clip
100	FSPC19	16-19mm Firesafe P Clip
100	FSPC21	19-21mm Firesafe P Clip
100	FSPC25	21-25mm Firesafe P Clip
100	FSPC29	25-29mm Firesafe P Clip
100	FSPC35	29-35mm Firesafe P Clip
100	FSPC40	35-40mm Firesafe P Clip
100	FSPC50	40-50mm Firesafe P Clip



Suitable for Steel Wired Armoured, Flexible Cable and Flexible Conduit



CTC PROFILES

CTC Industrial Rotary Isolator Profile



Qty	Part No.	Amp	Pole	Voltage	Enclosure Size
10	RI-20A-4P	20	4	415	125x100x120mm
10	RI-32A-4P	32	4	415	125x100x120mm
10	RI-20A-4PL	20	4	415	175x114x135mm
10	RI-32A-4PL	32	4	415	175x114x135mm
5	RI-63A-4P	63	4	415	175x114x135mm
1	RI-100A-4P	100	4	415	240x160x165mm

CTC Stainless Steel Cable Ties Profile

Qty	Part Number
2000	SST200-4.6
1000	SST300-4.6
500	SST360-4.6
200	SSTB6 Metal Cable Tie Base
1	CT1-SST Gun



CTC PROFILES

CTC Resin Joint Kit Profile

Qty	CTC	Description
10	USJ10	Straight Joint Kit 1.5 – 10mm 4 core
10	USJ16	Straight Joint Kit 1.5 – 16mm 4 core
5	USJ25	Straight Joint Kit 10 - 25mm 4 core
2	USJ50	Straight Joint Kit 25 - 50mm 4 core
2	USJ120	Straight Joint Kit 50 – 120mm 4 core
1	USJ240	Straight Joint Kit 120 – 240mm 4 core
2	UBJ10	Branch Joint Kit – Up to 10mm 4 core
1	UBJ25	Branch Joint Kit – Up to 10mm 4 core
1	USBJ50	Branch Joint Kit – Up to 10mm 4 core



CTC Din Rail Terminals and Control Products Profile

Qty	CTC	Description
4	CTB01C	10 x 2.5mm grey din terminals + 10 markers
3	CTB02C	10 x 4.0mm grey din terminals + 10 markers
2	CTB03C	5 X 10mm grey din terminals + 10 markers
2	CTB06C	Din Rail accessory pack c/w 2 x end plates, 2 x end brackets, 2 x partition, 2 x 4mm earth terminals, 1 x 4mm neutral & 10 markers
2	CTB09C	5 x 4mm Earth din terminals
3	CT-JUMPER	10 each 2.5mm & 4mm jumper bars
5	CTS35DIN-RAIL	2 metre din rail
2	CTRL01C	Relay 10amp 230vac 8pin
2	CTRL02C	Relay 10amp 230vac 11pin
2	CTRL05C	Relay 10amp 24vac 8pin
2	CTRL06C	Relay 10amp 24vdc 8pin
2	CTRL07C	Relay 10amp 24vac 11pin
2	CTRL08C	Relay 10amp 24vdc 11pin
6	CTBA01C	Relay base 8pin
6	CTBA02C	Relay base 11pin
2	CTM34C	Multifunction timer 12-240c ac/dc din mounted
2	CTCR40C	Contactor 20amp 2 pole 240v ac
2	CTCR41C	Contactor 25amp 4 pole 240v ac
2	CTCR44C	Contactor 40amp 2 pole 240v ac
2	CTCR42C	Contactor 40amp 4 pole 240v ac
2	CTES-TR	Emergency pushbutton station twist release
2	CTES-KR	Emergency pushbutton station key release complete



CTC PROFILES

CTC Girder Clip Profile



Qty	CTC	Description
25	CHH410-OCC1822	Conduit Clip
25	CHH1015-OCC1822	Conduit Clip
25	CHH1520-OCC1822	Conduit Clip
25	CHH1520-OCC2235	Conduit Clip
25	CX-16S	T bar Ceiling clip & nut
25	CSOB75LP	75mm Cable Tray Stand off Brackets
25	CSOB150LP	150mm Cable Tray Stand off Brackets
25	CSOB225LP	225mm Cable Tray Stand Off Brackets
25	CHH410-VRH8T	Rod Hanger 4-10mm Beam M8 Rod
25	CHH1015-VRH6T	Rod Hanger 10-15mm Beam M6 Rod
25	CHH1015-VRH8T	Rod Hanger 10-15mm Beam M8 Rod
25	CVH155-VRH8T	Vertical Rod Hanger 1.5-5mm Beam M8 Rod
25	CVH155-VRH10T	Vertical Rod Hanger 1.5-5mm Beam M10 Rod
100	CSEC-89	Edge Clips 2-4mm Girder 8-9mm Conduit
100	CSEC-1011	Edge Clips 2-4mm Girder 10-11mm Conduit
100	CSEC-1214	Edge Clips 2-4mm Girder 12-14mm Conduit
100	CSEC-1518	Edge Clips 2-4mm Girder 15-18mm Conduit
100	CSEC-1924	Edge Clips 2-4mm Girder 19-24mm Conduit
100	CSEC-2530	Edge Clips 2-4mm Girder 25-30mm Conduit
100	CMEC-89	Edge Clips 4-7mm Girder 8-9mm Conduit
100	CMEC-1011	Edge Clips 4-7mm Girder 10-11mm Conduit
100	CMEC-1214	Edge Clips 4-7mm Girder 12-14mm Conduit
100	CMEC-1518	Edge Clips 4-7mm Girder 15-18mm Conduit
100	CMEC-1924	Edge Clips 4-7mm Girder 19-24mm Conduit
100	CMEC-2530	Edge Clips 4-7mm Girder 25-30mm Conduit
100	CLEC-89	Edge Clips 8-12mm Girder 8-9mm Conduit
100	CLEC-1011	Edge Clips 8-12mm Girder 10-11mm Conduit
100	CLEC-1214	Edge Clips 8-12mm Girder 12-14mm Conduit
100	CLEC-1518	Edge Clips 8-12mm Girder 15-18mm Conduit
100	CLEC-1924	Edge Clips 8-12mm Girder 19-24mm Conduit
100	CLEC-2530	Edge Clips 8-12mm Girder 25-30mm Conduit
50	CHH-410	Horizontal Hanger Beam 4-10mm
50	CHH-1015	Horizontal Hanger Beam 10-15mm
50	CHH-1520	Horizontal Hanger Beam 15-20mm
50	CVH-155	Vertical Hanger Beam 1.5-5mm
25	CHC-37	Horizontal Beam Clip 3-7mm
25	CHC-713	Horizontal Beam Clip 7-13mm
25	CHC-1420	Horizontal Beam Clip 14-20mm

CTC PROFILES

CTC Copper Tube Profile



Qty	CTC	Description
100	10-6T	Copper Tube Terminals
100	10-8T	Copper Tube Terminals
100	10-10T	Copper Tube Terminals
100	16-6T	Copper Tube Terminals
100	16-8T	Copper Tube Terminals
100	16-10T	Copper Tube Terminals
100	16-12T	Copper Tube Terminals
100	25-8T	Copper Tube Terminals
100	25-10T	Copper Tube Terminals
100	25-12T	Copper Tube Terminals
50	35-8T	Copper Tube Terminals
50	35-10T	Copper Tube Terminals
50	35-12T	Copper Tube Terminals
50	50-8T	Copper Tube Terminals
50	50-10T	Copper Tube Terminals
50	50-12T	Copper Tube Terminals
25	70-8T	Copper Tube Terminals
25	70-10T	Copper Tube Terminals
25	70-12T	Copper Tube Terminals
25	95-8T	Copper Tube Terminals
25	95-10T	Copper Tube Terminals
25	95-12T	Copper Tube Terminals
25	120-8T	Copper Tube Terminals
25	120-10T	Copper Tube Terminals
25	120-16T	Copper Tube Terminals
25	150-10T	Copper Tube Terminals
25	150-12T	Copper Tube Terminals
25	150-16T	Copper Tube Terminals
12	185-12T	Copper Tube Terminals
12	185-16T	Copper Tube Terminals
12	240-12T	Copper Tube Terminals
12	240-16T	Copper Tube Terminals
12	300-12T	Copper Tube Terminals
12	300-16T	Copper Tube Terminals

Qty	CTC	Description
100	CBS10	Copper Tube Butt Splices
100	CBS16	Copper Tube Butt Splices
100	CBS25	Copper Tube Butt Splices
50	CBS35	Copper Tube Butt Splices
25	CBS50	Copper Tube Butt Splices
25	CBS70	Copper Tube Butt Splices
25	CBS95	Copper Tube Butt Splices
25	CBS120	Copper Tube Butt Splices
12	CBS150	Copper Tube Butt Splices
12	CBS185	Copper Tube Butt Splices
8	CBS240	Copper Tube Butt Splices
8	CBS300	Copper Tube Butt Splices

CTC PROFILES

CTC Pre-Insulated Terminal Profile



Qty	CTC	Description
500	RIR37	3.7mm Red Ring Terminal
500	RIR43	4.3mm Red Ring Terminal
500	RIR53	5.3mm Red Ring Terminal
500	RIR65	6.5mm Red Ring Terminal
500	RIF37	3.7mm Red Fork Terminal
500	RIF43	4.3mm Red Fork Terminal
500	RIF53	5.3mm Red Fork Terminal
500	RIP12	12mm Red Pin Terminal
500	RIB18	18mm Red Blade Terminal
500	RIMP63	6.3mm Red Male Push On Terminal
500	RIFP63	6.3mm Red Female Push on Terminal
500	RIFPT63	6.3mm Red Fully Insulated Female Push on
500	RIPIG63	6.3mm Red Piggy Back Terminal
500	RIBS	Red Butt Splices
500	BIR37	3.7mm Blue Ring Terminal
500	BIR43	4.3mm Blue Ring Terminal
500	BIR53	5.3mm Blue Ring Terminal
500	BIR65	6.5mm Blue Ring Terminal
500	BIF37	3.7mm Blue Fork Terminal
500	BIF43	4.3mm Blue Fork Terminal
500	BIF53	5.3mm Blue Fork Terminal
500	BIP12	12mm Blue Pin Terminal
500	BIB18	18mm Blue Blade Terminal
500	BIMP63	6.3mm Blue Male Push On Terminal
500	BIFP63	6.3mm Blue Female Push on Terminal
500	BIFPT63	6.3mm Blue Fully Insulated Female Push on
500	BIPIG63	6.3mm Blue Piggy Back Terminal
500	BIBS	Blue Butt Splices

Qty	CTC	Description
500	YIR43	4.3mm Yellow Ring Terminal
500	YIR53	5.3mm Yellow Ring Terminal
500	YIR65	6.5mm Yellow Ring Terminal
500	YIR85	8.5mm Yellow Ring Terminal
500	YIF43	4.3mm Yellow Fork Terminal
500	YIF53	5.3mm Yellow Fork Terminal
500	YIP14	14mm Yellow Pin
500	YIMP63	6.3mm Yellow Male Push on Terminal
500	YIFP63	6.3mm Yellow Female Push on
500	YIBS	Yellow Butt Splices

TOOL HIRE SOLUTIONS

Hiring made easy and convenient by CTC

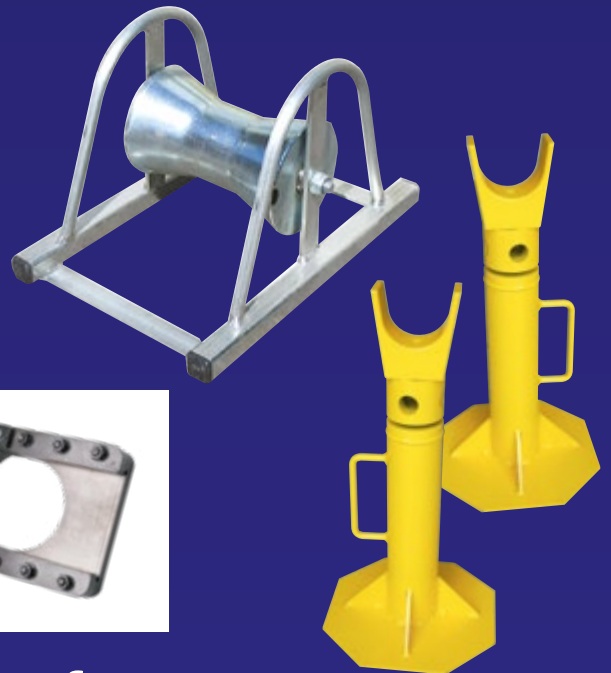
All our tools offered for hire are regularly serviced and are fully checked and tested before dispatch.

CTC also offer a tool repair, calibration and servicing facility.



Don't forget...

- Cable Cleats
- Cable Glands
- Cable Joints
- Cable Pulling Socks
- Cable Ties
- Copper Tube Terminals
- Heatshrink Sleeve
- Under Ground Warning Tape



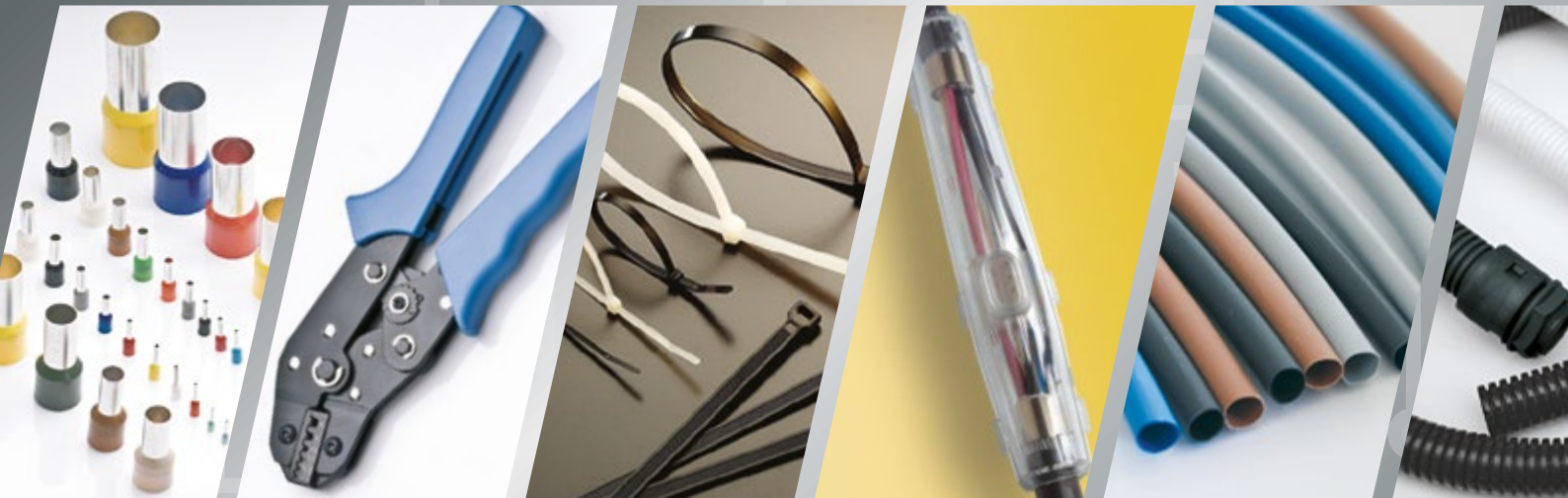
It's really easy to hire from CTC

All items are usually available for next day delivery (Monday-Friday) anywhere in the UK (morning delivery service available at extra cost).

Our hire periods vary from 2 to 7 days (or longer on request) just contact our team for more information.

CTC

Cable Termination Components



SUPPORTING UK BUSINESSES

Cable Termination Components Limited
Unit G, Brunel Court, Stroudwater Business Park, Stonehouse GL10 3SW

Tel: 01453 821798 Fax: 01453 823736
Web: www.ctcukltd Email: sales@ctcukltd.co.uk