



INTEGRITY
LIGHTING SOLUTIONS



V1 product guide



INTEGRITY LED TAPE RANGE

Our range of LED tape is produced to our own exacting standards. Every product in our LED tape range has been designed and manufactured to meet the below key requirements.

Certification & Approval -

- **CE & ROHS Marked** - Meets and exceeds all UK and EU safety & performance standards
- **TUV Approved** - Rigorously tested and approved by German testing house TUV
- **UL Intertek Approved** - Meets all requirements for use within the USA

Quality & Performance -

- **LM79 & LM80 Approved** - Tested to IESNA approved standards for LED performance over time. 50,000 hours for LED output to reduce to 80% of original light output
- **SDCM3** - LED tape produced with tight binning controls to ensure no batch variation in colour of LEDs
- **High CRI** - All LED tapes meet a minimum 80+ CRI ensuring a high-quality light suitable for a wide variety of applications. CRI90, CRI95 and CRI98 products are also available to custom order

Service & Aftersales -

- All **Integrity** LED tapes are supplied with a minimum 3 year warranty, with extended warranties available on enquiry
- Available to purchase by the reel or supplied fully bespoke to your requirements from our UK manufacturing facility
- Full technical support available with all data sheets available to download at www.integrity.lighting

IP20 INDOOR LED TAPE

Low-output 5w per metre LED tape ideal for plinth lighting and effect lighting. Built using high-quality 2oz copper PCB and next-generation 2835 LEDs for optimum brightness and efficiency. Available in 12v and 24v DC



LED PER METRE	LED CHIP TYPE	CUT INCREMENT	WIDTH
60	2835	50mm / 100mm (12V / 24V)	8MM



PART CODE	CONSUMPTION	VOLTAGE	MAXIMUM RUN LENGTH
LS5W - 5W PER METRE LED STRIP - UP TO 450 LUMENS PER METRE - CRI 80+ - SDCM3			
AVAILABLE IN 2700K, 3000K, 4000K, 6000K (OTHER COLOURS AVAILABLE ON REQUEST)			
LS5W-12V-* (27K, 3K, 4K, 6K)	5W/M	12V DC	5M
LS5W-24V-* (27K, 3K, 4K, 6K)	5W/M	24V DC	10M

LS10W Range

High density 10w per metre LED tape ideal for under cabinet and display lighting. Built using high-quality 2oz copper PCB and next-generation 2835 LEDs for optimum brightness and efficiency. Available in 12v and 24v DC



LED PER METRE	LED CHIP TYPE	CUT INCREMENT	WIDTH
120	2835	25mm / 50mm (12V / 24V)	8MM



PART CODE	CONSUMPTION	VOLTAGE	MAXIMUM RUN LENGTH
LS10W - 10W PER METRE LED STRIP - UP TO 900 LUMENS PER METRE - CRI 80+ - SDCM3			
AVAILABLE IN 2700K, 3000K, 4000K, 6000K (OTHER COLOURS AVAILABLE ON REQUEST)			
LS10W-12V-* (27K, 3K, 4K, 6K)	10W/M	12V DC	5M
LS10W-24V-* (27K, 3K, 4K, 6K)	10W/M	24V DC	10M

EXPERTS IN BESPOKE LINEAR LIGHTING SOLUTIONS

At Integrity Lighting Solutions, quality is our mission. Our customers work with us because we produce high quality products, with unrivaled customer service and a fast turnaround

All of our products carry a minimum 3 year warranty and we only use class-leading components from trusted manufacturers

We supply custom LED lighting solutions to a number of sectors including retail POS, hospitality, architectural design and residential

Our extensive knowledge of the LED lighting industry has enabled us to become the preferred supplier to a number of leading companies across the UK

Our vast range of products includes LED tape, aluminium extrusion profiles, LED drivers & controllers and LED signage solutions



Our commitment to UK manufacture has seen us become members of Made In Britain. The vast majority of our products undergo a substantial and transformative change at our bespoke manufacturing facility in Leicester

We are proud to be producing bespoke lighting solutions here in the UK which are installed all over the UK, Europe and worldwide

Get in touch to find out how we could support you on your next project with our custom-built lighting products

IP20 INDOOR LED TAPE

LS15W Range

High density 15w per metre LED tape ideal for applications requiring a higher lumen output. Built using high-quality 2oz copper PCB and next-generation 2835 LEDs for optimum brightness and efficiency



LED PER METRE	LED CHIP TYPE	CUT INCREMENT	WIDTH
120	2835	50MM	8MM



PART CODE	CONSUMPTION	VOLTAGE	MAXIMUM RUN LENGTH
LS15W - 15W PER METRE LED STRIP - UP TO 1350 LUMENS PER METRE - CRI 80+ - SDCM3			
AVAILABLE IN 2700K, 3000K, 4000K, 6000K (OTHER COLOURS AVAILABLE ON REQUEST)			
LS15W-24V-* (27K, 3K, 4K, 6K)	15W/M	24V DC	10M

LS17W Range

High output 17w per metre LED tape ideal for demanding applications and can be used as primary lighting. Built using high-quality 3oz copper PCB and next-generation 2835 LEDs for optimum brightness and efficiency



LED PER METRE	LED CHIP TYPE	CUT INCREMENT	WIDTH
240	2835	25MM	10MM



PART CODE	CONSUMPTION	VOLTAGE	MAXIMUM RUN LENGTH
LS17W - 17W PER METRE LED STRIP - UP TO 2000 LUMENS PER METRE - CRI 80+ - SDCM3			
AVAILABLE IN 2700K, 3000K, 4000K, 6000K (OTHER COLOURS AVAILABLE ON REQUEST)			
LS17W-24V-* (27K, 3K, 4K, 6K)	17W/M	24V DC	10M

CRI90 CONTINUOUS LED TAPE

COB Range

Our new range of COB LED tape is designed to provide a homogenous effect, even when installed into shallow extrusion profiles. CRI90 as standard for premium light quality. Available in both 5w and 10w output to suit a variety of applications



LED PER METRE	LED CHIP TYPE	CUT INCREMENT	WIDTH
CONTINUOUS	COB	47MM	8MM

PART CODE	CONSUMPTION	VOLTAGE	MAXIMUM RUN LENGTH
CB5W - 5W PER METRE LED STRIP - UP TO 500 LUMENS PER METRE - CRI 90+ - SDCM3			
AVAILABLE IN 2700K, 3000K, 4000K, 6000K (OTHER COLOURS AVAILABLE ON REQUEST)			
CB5W-24V-* (27K, 3K, 4K, 6K)	5W/M	24V DC	5M

PART CODE	CONSUMPTION	VOLTAGE	MAXIMUM RUN LENGTH
CB10W - 10W PER METRE LED STRIP - UP TO 1000 LUMENS PER METRE - CRI 90+ - SDCM3			
AVAILABLE IN 2700K, 3000K, 4000K, 6000K (OTHER COLOURS AVAILABLE ON REQUEST)			
CB10W-24V-* (27K, 3K, 4K, 6K)	10W/M	24V DC	5M

IP65 ENCAPSULATED LED TAPE

IP5W Range

Low-output 5w per metre LED tape ideal for step lighting and effect lighting. Built using high-quality 2oz copper PCB and next-generation 2835 LEDs for optimum brightness and efficiency



LED PER METRE	LED CHIP TYPE	CUT INCREMENT	WIDTH
60	2835	100MM	10MM



PART CODE	CONSUMPTION	VOLTAGE	MAXIMUM RUN LENGTH
IP5W - 5W PER METRE LED STRIP - UP TO 450 LUMENS PER METRE - CRI 80+ - SDCM3			
AVAILABLE IN 2700K, 3000K, 4000K, 6000K (OTHER COLOURS AVAILABLE ON REQUEST)			
IP5W-24V-* (27K, 3K, 4K, 6K)	5W/M	24V DC	10M

This product is fully encapsulated in an IP68 silicone sleeving. Achieving IP68 rating is only possible with correct installation and appropriate cable termination

IP10W Range

High density 10w per metre LED tape ideal for illuminating external walls and features. Built using high-quality 2oz copper PCB and next-generation 2835 LEDs for optimum brightness and efficiency



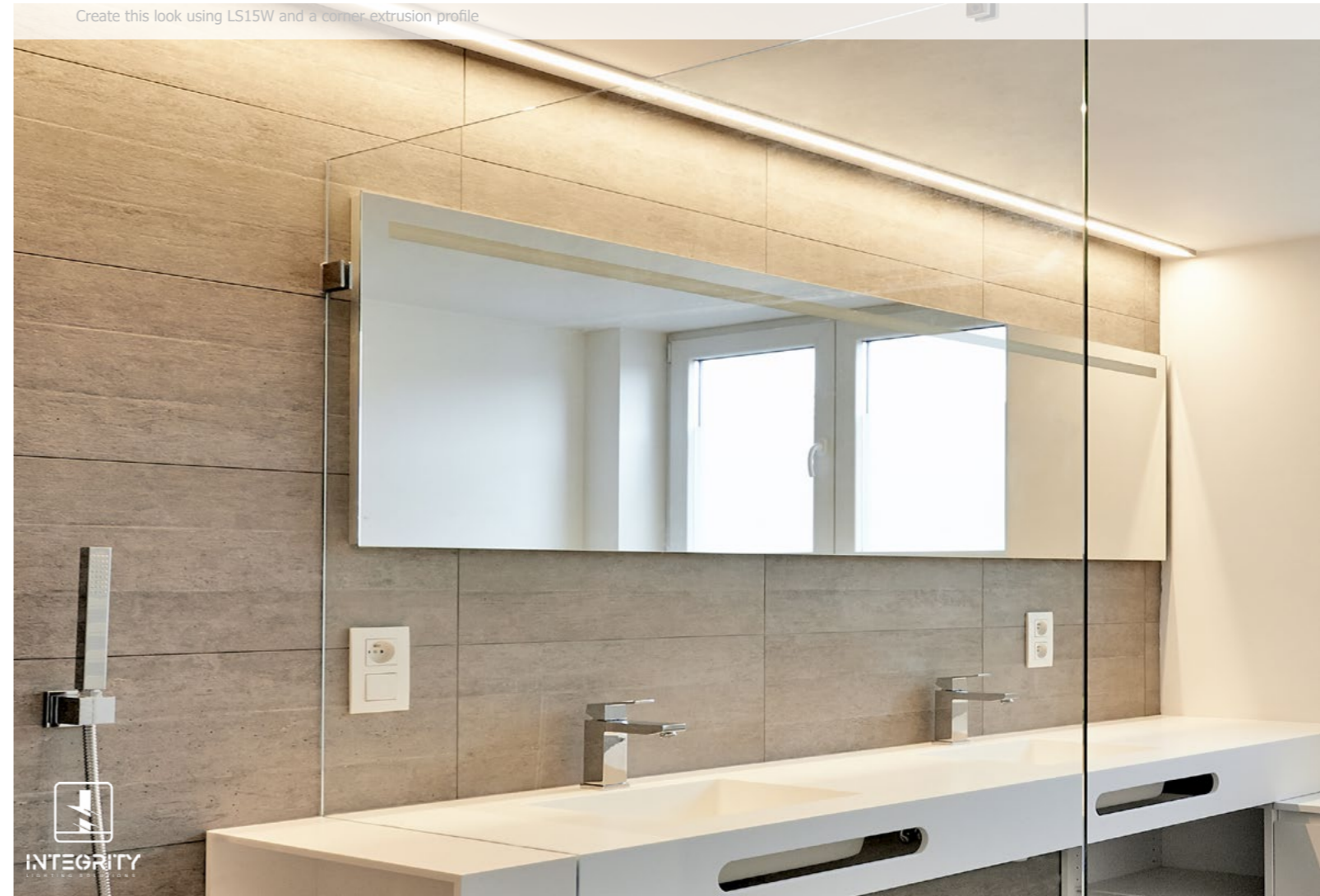
LED PER METRE	LED CHIP TYPE	CUT INCREMENT	WIDTH
120	2835	50MM	10MM



PART CODE	CONSUMPTION	VOLTAGE	MAXIMUM RUN LENGTH
IP10W - 10W PER METRE LED STRIP - UP TO 900 LUMENS PER METRE - CRI 80+ - SDCM3			
AVAILABLE IN 2700K, 3000K, 4000K, 6000K (OTHER COLOURS AVAILABLE ON REQUEST)			
IP10W-24V-* (27K, 3K, 4K, 6K)	10W/M	24V DC	10M

This product is fully encapsulated in an IP68 silicone sleeving. Achieving IP68 rating is only possible with correct installation and appropriate cable termination

Create this look using LS15W and a corner extrusion profile



IP20 COLOUR CHANGING LED TAPE

LSRGB Range

High output 15w per metre RGB LED tape ideal for applications requiring a bold burst of colour. Built using high-quality 2oz copper PCB and next-generation 5050 LEDs. Integrated RGB LEDs create a smooth and colourful RGB mixing effect when used with RGB controller



LED PER METRE	LED CHIP TYPE	CUT INCREMENT	WIDTH
60	5050	100MM	10MM



PART CODE	CONSUMPTION	VOLTAGE	MAXIMUM RUN LENGTH
LSRGB15 - 15W PER METRE LED STRIP - UP TO 620 LUMENS PER METRE - CRI 80+ - SDCM3			
LSRGB-24V	15W/M	24V DC	10M

LSRGBW Range

High output 20w per metre RGB LED tape with integrated white LED chip. Built using high-quality 2oz copper PCB and next-generation 5050 LEDs. Integrated RGB LEDs and white LED allows for a flexible product which can create soft pastel hues, intense colour and pure white illumination



LED PER METRE	LED CHIP TYPE	CUT INCREMENT	WIDTH
60	5050	100MM	12MM



PART CODE	CONSUMPTION	VOLTAGE	MAXIMUM RUN LENGTH
LSRGBW - 20W PER METRE LED STRIP - UP TO 820 LUMENS PER METRE - CRI 80+ - SDCM3			
AVAILABLE IN 3000K, 4000K (OTHER COLOURS AVAILABLE ON REQUEST)			
LSRGBW-24V-3K	20W/M	24V DC	10M
LSRGBW-24V-4K	20W/M	24V DC	10M

IP65 COLOUR CHANGING LED TAPE

IPRGB Range

High output 15w per metre RGB LED tape ideal for applications requiring a bold burst of colour. Built using high-quality 2oz copper PCB and next-generation 5050 LEDs. Integrated RGB LEDs create a smooth and colourful RGB mixing effect when used with RGB controller



LED PER METRE	LED CHIP TYPE	CUT INCREMENT	WIDTH
60	5050	100MM	12MM



PART CODE	CONSUMPTION	VOLTAGE	MAXIMUM RUN LENGTH
IPRGB - 15W PER METRE LED STRIP - UP TO 620 LUMENS PER METRE - CRI 80+ - SDCM3			
IPRGB-24V	15W/M	24V DC	10M
This product is fully encapsulated in an IP68 silicone sleeving. Achieving IP68 rating is only possible with correct installation and appropriate cable termination			

IPRGBW Range

High output 20w per metre RGB LED tape with integrated white LED chip. Built using high-quality 2oz copper PCB and next-generation 5050 LEDs. Integrated RGB LEDs and white LED allows for a flexible product which can create soft pastel hues, intense colour and pure white illumination



LED PER METRE	LED CHIP TYPE	CUT INCREMENT	WIDTH
60	5050	10 0MM	14MM



PART CODE	CONSUMPTION	VOLTAGE	MAXIMUM RUN LENGTH
IPRGBW - 20W PER METRE LED STRIP - UP TO 820 LUMENS PER METRE - CRI 80+ - SDCM3			
IPRGBW-24V-3K	20W/M	24V DC	10M
IPRGBW-24V-4K	20W/M	24V DC	10M
This product is fully encapsulated in an IP68 silicone sleeving. Achieving IP68 rating is only possible with correct installation and appropriate cable termination			

LED CONTROLLERS

PART CODE	DESCRIPTION
WALL PLATE CONTROL	
WP1	RGB & RGBW SINGLE ZONE CONTROLLER (DMX & RF)
WP2	RGB & RGBW FOUR ZONE CONTROLLER (DMX & RF)
RD1	WIRED DMX RECIEVER FOR WP1 & WP2
RF1	WIRELESS RF RECIEVER FOR WP1, WP2 & RM3
REMOTE CONTROL	
RM1	SINGLE ZONE RGB/RGBW REMOTE WITH RECEIVER
RM2	SINGLE ZONE STATIC COLOUR DIMMER REMOTE WITH RECEIVER
RM3	FOUR ZONE RGB/RGBW REMOTE (MUST BE PURCHASED WITH RF1 RECEIVER)



WP1 Single Zone



WP2 Four Zone



RM1



RM3



RD1



RF1



- Compact and light-weight plastic case
- Short circuit, overload and over temperature protection
- SELV, MM and F rated
- Shielded screw terminal connections
- 3 year warranty



- Compact and light-weight plastic case
- Short circuit, overload and over temperature protection
- SELV, MM and F rated
- Shielded screw terminal connections
- 3 year warranty
- Competitively priced Philips branded PSU

NON-DIMMABLE LED DRIVERS

PART CODE	MAX LOAD
PS SCREW TERMINAL CONSTANT VOLTAGE - 12V OR 24V DC	
PS-15	15W
PS-30	30W
PS-50	50W
PS-75	75W
PS-100	100W
PS-150	150W
PS-200	200W

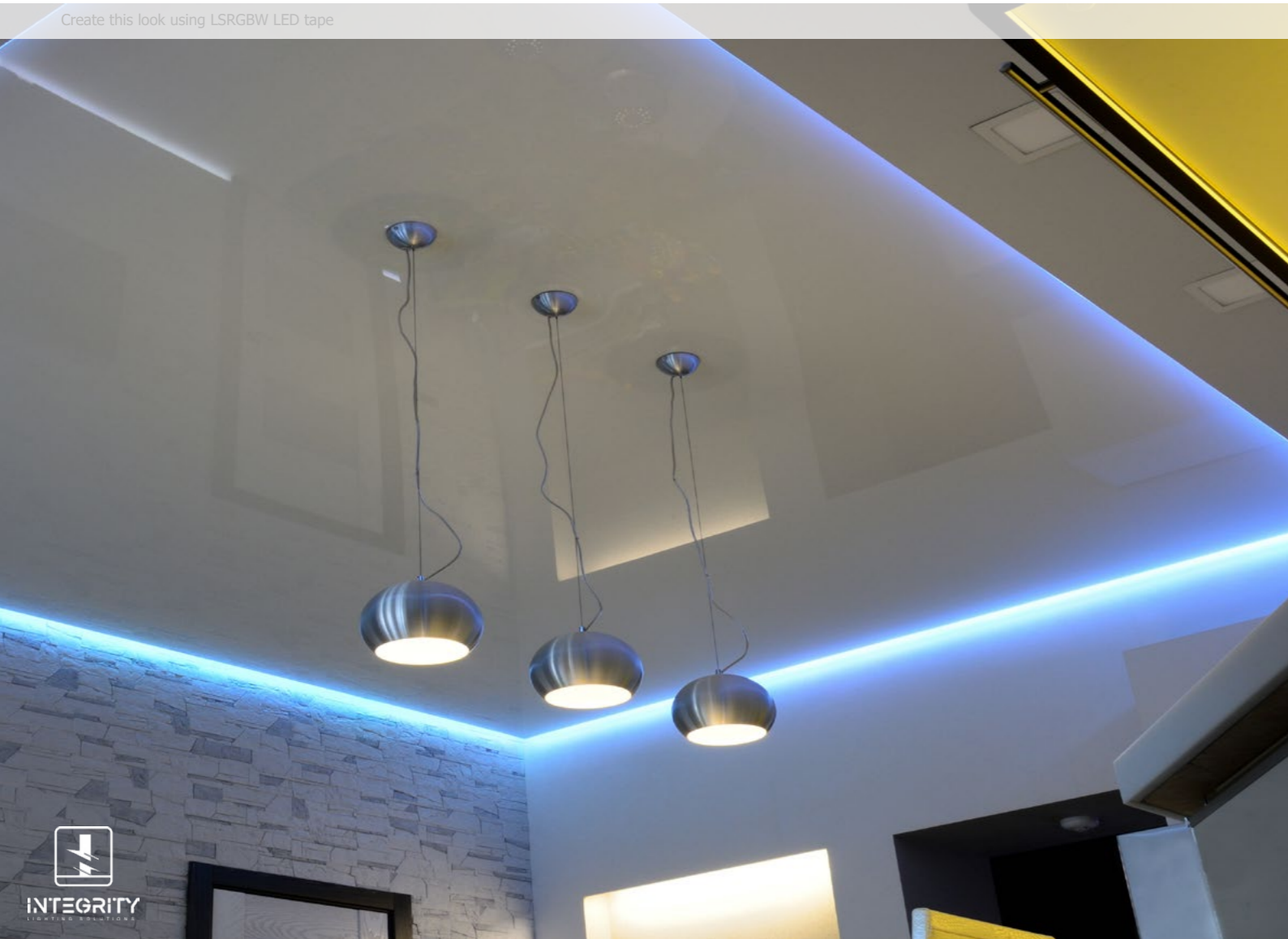
PART CODE	MAX LOAD
PHILIPS XLT SCREW TERMINAL CONSTANT VOLTAGE - 12V	
XLT-20	20W
XLT-30	30W
XLT-45	45W
XLT-60	60W
XLT-100	100W

IP-RATED NON-DIMMABLE LED DRIVERS

PART CODE	MAX LOAD
EPV IP67 CONSTANT VOLTAGE - 12V OR 24V DC	
PSIP-40	40W
PSIP-60	60W
PSIP-100	100W



PART CODE	MAX LOAD
MEANWELL HLG SERIES IP67 CONSTANT VOLTAGE - 12V OR 24V DC	
HLG-320	320W
HLG-480	480W



Create this look using LSRGBW LED tape

SLIMLINE NON-DIMMABLE LED DRIVERS



PART CODE	MAX LOAD
SLIMLINE NON-DIMMABLE LED DRIVERS 12V OR 24V	
PSSLIM-30	30W
PSSLIM-45	45W
PSSLIM-60	60W
PSSLIM-100	100W

TRIAC MAINS-DIMMABLE LED DRIVERS



PART CODE	MAX LOAD
TRIAC MAINS DIMMABLE PWM LED DRIVERS 12V OR 24V	
PSTRIAC-25	25W
PSTRIAC-50	50W
PSTRIAC-100	100W
PSTRIAC-200	200W

0-10V ANALOGUE DIMMABLE LED DRIVERS



PART CODE	MAX LOAD
0-10V ANALOGUE DIMMABLE PWM LED DRIVERS 12V OR 24V	
PSVDIM-25	25W
PSVDIM-50	50W
PSVDIM-100	100W
PSVDIM-200	200W

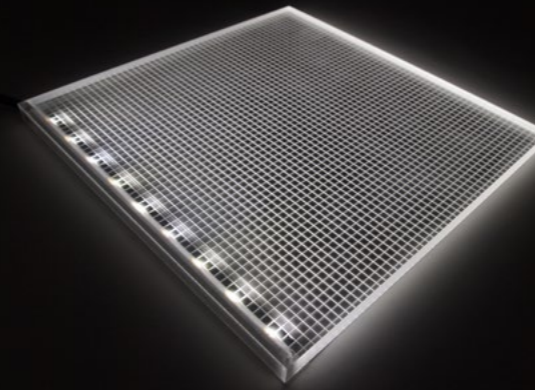
DALI DIMMABLE LED DRIVERS



PART CODE	MAX LOAD
DALI DIMMABLE PWM LED DRIVERS 12V OR 24V	
PSDALI-25	25W
PSDALI-50	50W
PSDALI-100	100W
PSDALI-200	200W

DISPLAY LIGHTING RANGE

LED Light Sheet

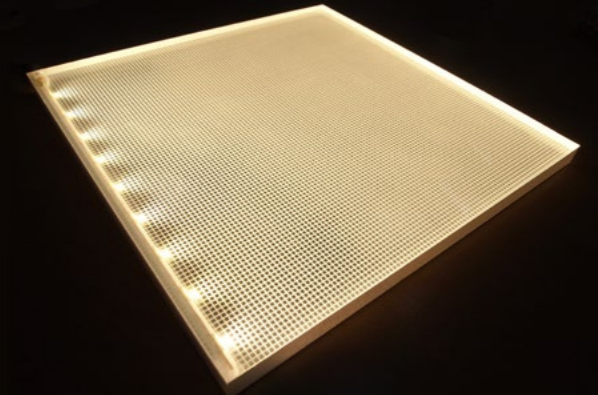


LED light sheet panels are perfect for applications requiring effective backlighting and even illumination, even where depth is limited. Light sheets are acrylic sheets which have been screen printed or etched with a pattern to allow for even light distribution across the size of the panel. The LED light source is then embedded into the edge of the panel to provide effective illumination for lightboxes, displays, shelving and many other applications

Integrity produce competitively priced LED panels produced in the UK to exceptionally high standards. Holding several patents, including thermal management for effective heat dissipation, our LED panels are widely regarded to be the best available and are produced bespoke to order

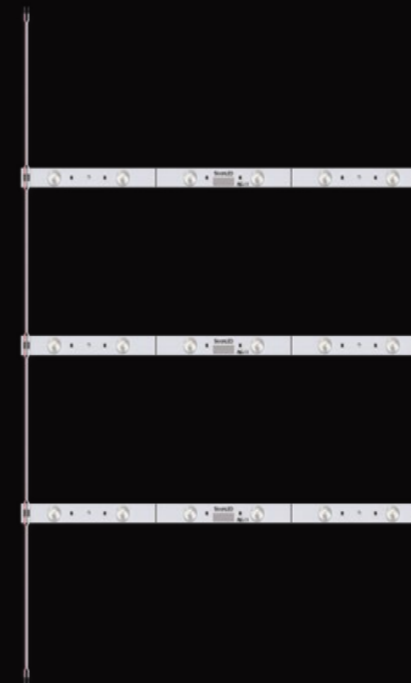
Our panels are available in a wide variety of colour temperatures, including RGBW and CCT colour adjustable. We can produce panels to a number of different panel thicknesses (dependent on size) to suit almost any application

On average our LED panels are 20% brighter than competitor products and we can supply them as part of a fully bespoke assembly along with any of our other products for a truly plug-and-play project solution



Contact us with your project requirements for advice and pricing

Sloane Brightline



Our lightbox LED modules ensure that your brand or message stands out from the crowd

Integrity Brightline modules are designed to be mounted to the back of a lightbox to provide even illumination to your graphic or brand logo. These are suitable for use in lightboxes from 40mm to 200mm in depth and provide excellent output whilst ensuring that there is no spotting or dotting from the individual LEDs

Integrity have partnered with Sloane LED, one of the most renowned names in LED signage products, to supply their Brightline range of LED light bars





INTEGRITY
LIGHTING SOLUTIONS



Product Shown - GL3 Glass Extrusion Profile

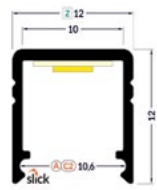
OUR EXTRUSION PROFILE RANGE

Our aluminium extrusion range is manufactured in the EU and is a comprehensive range of surface, recessed, corner, specialist and glass profiles to suit a wide range of applications

Our profiles are available in 2m lengths, or customised to order. As standard they are available in anodised aluminium, raw aluminium, white and black, We can also colour match to any RAL colour to suit your project needs

Product Shown - SF2 Surface Profile and LS5 LED tape





SURFACE PROFILE

DIFFUSERS



FIXING CLIPS



MAX LED STRIP WIDTH

8mm



SF1 - SIMPLE SURFACE PROFILE				
PART CODE	FINISH	LENGTH		
SF1-A	ANODISED	2M		
SF1-R	RAW ALUMINIUM	2M		
SF1-B	BLACK ANODISED	2M		
SF1-W	WHITE ANODISED	2M		
DIFFUSER COVERS	FINISH	LENGTH	TYPE	
CVR-A-O	OPAL	2M	SLIDE-IN	
CVR-A-F	FROSTED	2M	SLIDE-IN	
CVR-A-T	TRANSPARENT	2M	SLIDE-IN	
CVR-C2-O	OPAL	2M	CLIP-IN	
CVR-C2-T	TRANSPARENT	2M	CLIP-IN	



SURFACE PROFILE

DIFFUSERS

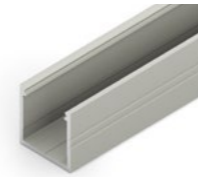


FIXING CLIPS

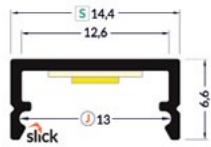


MAX LED STRIP WIDTH

16mm



SF5 - SIMPLE LARGE SURFACE PROFILE			
PART CODE	FINISH	LENGTH	
SF5-A	ANODISED	2M	
SF5-R	RAW ALUMINIUM	2M	
SF5-B	BLACK ANODISED	2M	
SF5-W	WHITE ANODISED	2M	
DIFFUSER COVERS	FINISH	LENGTH	TYPE
CVR-B-O	OPAL	2M	SLIDE-IN
CVR-B-F	FROSTED	2M	SLIDE-IN
CVR-B-T	TRANSPARENT	2M	SLIDE-IN
CVR-C3-O	OPAL	2M	CLIP-IN
CVR-C3-T	TRANSPARENT	2M	CLIP-IN



SURFACE PROFILE

DIFFUSERS



FIXING CLIPS

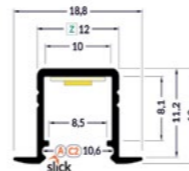


MAX LED STRIP WIDTH

12mm



SF2 - SLIM SURFACE PROFILE			
PART CODE	FINISH	LENGTH	
SF2-A	ANODISED	2M	
SF2-R	RAW ALUMINIUM	2M	
SF2-B	BLACK ANODISED	2M	
SF2-W	WHITE ANODISED	2M	
DIFFUSER COVERS	FINISH	LENGTH	TYPE
CVR-J-O	OPAL	2M	SLIDE-IN
CVR-J-F	FROSTED	2M	SLIDE-IN
CVR-J-T	TRANSPARENT	2M	SLIDE-IN
CVR-C-O	OPAL	2M	CLIP-IN
CVR-C-T	TRANSPARENT	2M	CLIP-IN



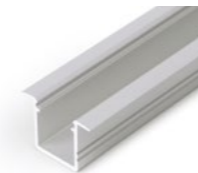
RECESSED PROFILE

DIFFUSERS

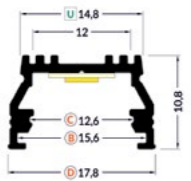


MAX LED STRIP WIDTH

8mm



RC1 - SIMPLE RECESSED PROFILE			
PART CODE	FINISH	LENGTH	
RC1-A	ANODISED	2M	
RC1-R	RAW ALUMINIUM	2M	
RC1-B	BLACK ANODISED	2M	
RC1-W	WHITE ANODISED	2M	
DIFFUSER COVERS	FINISH	LENGTH	TYPE
CVR-A-O	OPAL	2M	SLIDE-IN
CVR-A-F	FROSTED	2M	SLIDE-IN
CVR-A-T	TRANSPARENT	2M	SLIDE-IN



SURFACE PROFILE

DIFFUSERS



FIXING CLIPS

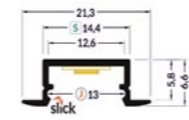


MAX LED STRIP WIDTH

12mm



SF3 - UNIVERSAL SURFACE PROFILE			
PART CODE	FINISH	LENGTH	
SF3-A	ANODISED	2M	
SF3-R	RAW ALUMINIUM	2M	
SF3-B	BLACK ANODISED	2M	
SF3-W	WHITE ANODISED	2M	
DIFFUSER COVERS	FINISH	LENGTH	TYPE
CVR-B-O	OPAL	2M	SLIDE-IN
CVR-B-F	FROSTED	2M	SLIDE-IN
CVR-B-T	TRANSPARENT	2M	SLIDE-IN
CVR-C-O	OPAL	2M	CLIP-IN
CVR-C-T	TRANSPARENT	2M	CLIP-IN
CVR-D-O	DOMED OPAL	2M	CLIP-IN



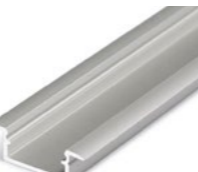
RECESSED PROFILE

DIFFUSERS

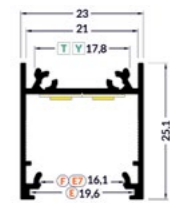


MAX LED STRIP WIDTH

12mm



RC2 - LOW-PROFILE RECESSED PROFILE			
PART CODE	FINISH	LENGTH	
RC2-A	ANODISED	2M	
RC2-R	RAW ALUMINIUM	2M	
RC2-B	BLACK ANODISED	2M	
RC2-W	WHITE ANODISED	2M	
DIFFUSER COVERS	FINISH	LENGTH	TYPE
CVR-J-O	OPAL	2M	SLIDE-IN
CVR-J-F	FROSTED	2M	SLIDE-IN
CVR-J-T	TRANSPARENT	2M	SLIDE-IN
CVR-C-O	OPAL	2M	CLIP-IN
CVR-C-T	TRANSPARENT	2M	CLIP-IN



SURFACE PROFILE

DIFFUSERS



FIXING CLIPS

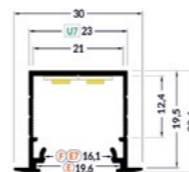


MAX LED STRIP WIDTH

20mm



SF4 - LARGE LINEAR SURFACE PROFILE			
PART CODE	FINISH	LENGTH	
SF4-A	ANODISED	2M	
SF4-R	RAW ALUMINIUM	2M	
SF4-B	BLACK ANODISED	2M	
SF4-W	WHITE ANODISED	2M	
DIFFUSER COVERS	FINISH	LENGTH	TYPE
CVR-E-O	OPAL	2M	SLIDE-IN
CVR-E-F	FROSTED	2M	SLIDE-IN
CVR-E-T	TRANSPARENT	2M	SLIDE-IN
CVR-F-O	OPAL	2M	CLIP-IN
CVR-F-T	TRANSPARENT	2M	CLIP-IN



RECESSED PROFILE

DIFFUSERS



MAX LED STRIP WIDTH

20mm



RC3 - LARGE LINEAR RECESSED PROFILE			
PART CODE	FINISH	LENGTH	
RC3-A	ANODISED	2M	
RC3-R	RAW ALUMINIUM	2M	
RC3-B	BLACK ANODISED	2M	
RC3-W	WHITE ANODISED	2M	
DIFFUSER COVERS	FINISH	LENGTH	TYPE
CVR-E-O	OPAL	2M	SLIDE-IN
CVR-E-F	FROSTED	2M	SLIDE-IN
CVR-E-T	TRANSPARENT	2M	SLIDE-IN
CVR-F-O	OPAL	2M	CLIP-IN
CVR-F-T	TRANSPARENT	2M	CLIP-IN



RECESSED PROFILE

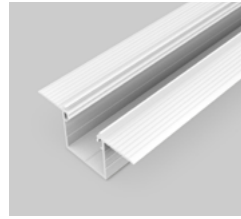
DIFFUSERS

- E
- F

MAX LED STRIP WIDTH

20mm

RC4 - PLASTER-IN LINEAR RECESSED PROFILE				
PART CODE	FINISH	LENGTH		
RC4-A	ANODISED	2M		
RC4-R	RAW ALUMINIUM	2M		
RC4-B	BLACK ANODISED	2M		
RC4-W	WHITE ANODISED	2M		
DIFFUSER COVERS	FINISH	LENGTH	TYPE	
CVR-E-O	OPAL	2M	SLIDE-IN	
CVR-E-F	FROSTED	2M	SLIDE-IN	
CVR-E-T	TRANSPARENT	2M	SLIDE-IN	
CVR-F-O	OPAL	2M	CLIP-IN	
CVR-F-T	TRANSPARENT	2M	CLIP-IN	



RECESSED PROFILE

DIFFUSERS

- B
- C3

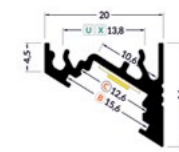
FIXING CLIPS

- U4

MAX LED STRIP WIDTH

16mm

RC5 - SIMPLE LARGE RECESSED PROFILE				
PART CODE	FINISH	LENGTH		
RC5-A	ANODISED	2M		
RC5-R	RAW ALUMINIUM	2M		
RC5-B	BLACK ANODISED	2M		
RC5-W	WHITE ANODISED	2M		
DIFFUSER COVERS	FINISH	LENGTH	TYPE	
CVR-B-O	OPAL	2M	SLIDE-IN	
CVR-B-F	FROSTED	2M	SLIDE-IN	
CVR-B-T	TRANSPARENT	2M	SLIDE-IN	
CVR-C3-O	OPAL	2M	CLIP-IN	
CVR-C3-T	TRANSPARENT	2M	CLIP-IN	



CORNER PROFILE

DIFFUSERS

- B
- C

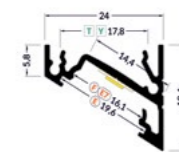
FIXING CLIPS

- U

MAX LED STRIP WIDTH

10mm

CR1 - SMALL CORNER PROFILE				
PART CODE	FINISH	LENGTH		
CR1-A	ANODISED	2M		
CR1-R	RAW ALUMINIUM	2M		
CR1-B	BLACK ANODISED	2M		
CR1-W	WHITE ANODISED	2M		
DIFFUSER COVERS	FINISH	LENGTH	TYPE	
CVR-B-O	OPAL	2M	SLIDE-IN	
CVR-B-F	FROSTED	2M	SLIDE-IN	
CVR-B-T	TRANSPARENT	2M	SLIDE-IN	
CVR-C-O	OPAL	2M	CLIP-IN	
CVR-C-T	TRANSPARENT	2M	CLIP-IN	



CORNER PROFILE

DIFFUSERS

- E
- F

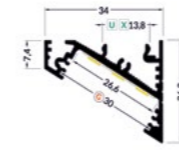
FIXING CLIPS

- Y

MAX LED STRIP WIDTH

14mm

CR2 - MEDIUM CORNER PROFILE				
PART CODE	FINISH	LENGTH		
CR2-A	ANODISED	2M		
CR2-R	RAW ALUMINIUM	2M		
CR2-B	BLACK ANODISED	2M		
CR2-W	WHITE ANODISED	2M		
DIFFUSER COVERS	FINISH	LENGTH	TYPE	
CVR-E-O	OPAL	2M	SLIDE-IN	
CVR-E-F	FROSTED	2M	SLIDE-IN	
CVR-E-T	TRANSPARENT	2M	SLIDE-IN	
CVR-F-O	OPAL	2M	CLIP-IN	
CVR-F-T	TRANSPARENT	2M	CLIP-IN	



CORNER PROFILE

DIFFUSERS

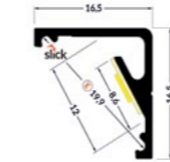
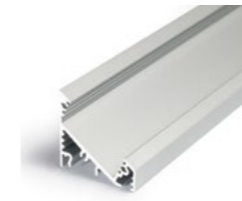
- G

FIXING CLIPS

- U

MAX LED STRIP WIDTH

27mm



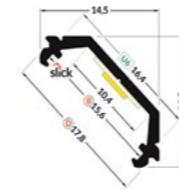
CORNER PROFILE

DIFFUSERS

- E

MAX LED STRIP WIDTH

12mm



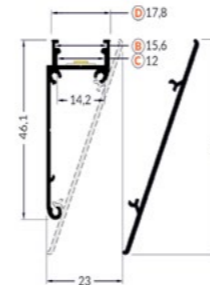
CORNER PROFILE

DIFFUSERS

- B
- D

MAX LED STRIP WIDTH

10mm



SPECIALIST PROFILE

DIFFUSERS

- B
- C
- D

MAX LED STRIP WIDTH

12mm

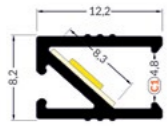


CR3 - LARGE CORNER PROFILE				
PART CODE	FINISH	LENGTH		
CR3-A	ANODISED	2M		
CR3-R	RAW ALUMINIUM	2M		
CR3-B	BLACK ANODISED	2M		
CR3-W	WHITE ANODISED	2M		
DIFFUSER COVERS	FINISH	LENGTH	TYPE	
CVR-G-O	OPAL	2M	SLIDE-IN	
CVR-G-F	FROSTED	2M	SLIDE-IN	
CVR-G-T	TRANSPARENT	2M	SLIDE-IN	

CR4 - CABINET CORNER PROFILE				
PART CODE	FINISH	LENGTH		
CR4-A	ANODISED	2M		
CR4-R	RAW ALUMINIUM	2M		
CR4-B	BLACK ANODISED	2M		
CR4-W	WHITE ANODISED	2M		
DIFFUSER COVERS	FINISH	LENGTH	TYPE	
CVR-E-O	OPAL	2M	SLIDE-IN	
CVR-E-F	FROSTED	2M	SLIDE-IN	
CVR-E-T	TRANSPARENT	2M	SLIDE-IN	

CR5 - VERSATILE CORNER PROFILE				
PART CODE	FINISH	LENGTH		
CR5-A	ANODISED	2M		
DIFFUSER COVERS	FINISH	LENGTH	TYPE	
CVR-B-O	OPAL	2M	SLIDE-IN	
CVR-B-F	FROSTED	2M	SLIDE-IN	
CVR-B-T	TRANSPARENT	2M	SLIDE-IN	
CVR-D-O	DOMED OPAL	2M	CLIP-IN	

SP1 - SPECIALIST COVING PROFILE				
PART CODE	FINISH	LENGTH		
SP1-A	ANODISED	2M		
SP1-R	RAW	2M		
SP1-W	WHITE	2M		
SP1-A-C	ANODISED FRONT COVER	2M		
SP1-R-C	RAW FRONT COVER	2M		
SP1-W-C	WHITE FRONT COVER	2M		
DIFFUSER COVERS	FINISH	LENGTH	TYPE	
CVR-B-O	OPAL	2M	SLIDE-IN	
CVR-B-F	FROSTED	2M	SLIDE-IN	
CVR-B-T	TRANSPARENT	2M	SLIDE-IN	
CVR-C-O	OPAL	2M	CLIP-IN	
CVR-C-T	TRANSPARENT	2M	CLIP-IN	
CVR-D-O	DOMED OPAL	2M	CLIP-IN	



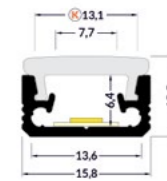
SPECIALIST PROFILE

SP2 - FURNITURE SPECIALIST PROFILE			
PART CODE	FINISH	LENGTH	
SP2-A	ANODISED	2M	
DIFFUSER COVERS	FINISH	LENGTH	TYPE
CVR-C1-O	OPAL	2M	CLIP-IN

DIFFUSERS
C1



MAX LED STRIP WIDTH
8mm



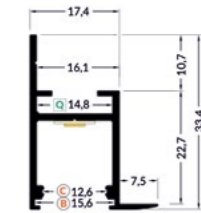
SPECIALIST PROFILE

SP3 - WALKOVER SPECIALIST PROFILE			
PART CODE	FINISH	LENGTH	
SP3-A	ANODISED	2M	
DIFFUSER COVERS	FINISH	LENGTH	TYPE
CVR-K-O	OPAL	2M	CLIP-IN

DIFFUSERS
K



MAX LED STRIP WIDTH
12mm



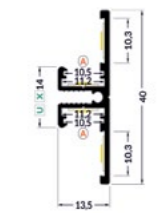
SPECIALIST PROFILE

SP4 - CEILING GRID SPECIALIST PROFILE			
PART CODE	FINISH	LENGTH	
SP4-A	ANODISED	2M	
SP4-R	RAW	2M	
SP4-W	WHITE	2M	
DIFFUSER COVERS	FINISH	LENGTH	TYPE
CVR-B-O	OPAL	2M	SLIDE-IN
CVR-B-F	FROSTED	2M	SLIDE-IN
CVR-B-T	TRANSPARENT	2M	SLIDE-IN
CVR-C-O	OPAL	2M	CLIP-IN
CVR-C-T	TRANSPARENT	2M	CLIP-IN

DIFFUSERS
B C



MAX LED STRIP WIDTH
14mm



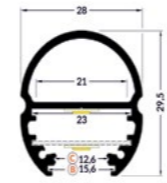
SPECIALIST PROFILE

SP5 - HALO SPECIALIST PROFILE			
PART CODE	FINISH	LENGTH	
SP5-A	ANODISED	2M	
SP5-R	RAW	2M	
SP5-W	WHITE	2M	
SP5-B	BLACK	2M	
DIFFUSER COVERS	FINISH	LENGTH	TYPE
CVR-A-O	OPAL	2M	SLIDE-IN
CVR-A-F	FROSTED	2M	SLIDE-IN
CVR-A-T	TRANSPARENT	2M	SLIDE-IN

DIFFUSERS
A



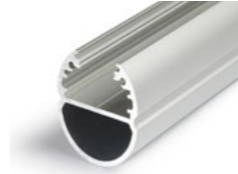
MAX LED STRIP WIDTH
14mm



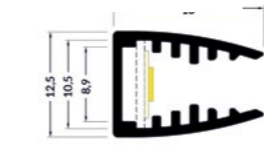
SPECIALIST PROFILE

SP6 - HANGING RAIL SPECIALIST PROFILE			
PART CODE	FINISH	LENGTH	
SP6-A	ANODISED	2M	
DIFFUSER COVERS	FINISH	LENGTH	TYPE
CVR-B-O	OPAL	2M	SLIDE-IN
CVR-B-F	FROSTED	2M	SLIDE-IN
CVR-B-T	TRANSPARENT	2M	SLIDE-IN
CVR-C-O	OPAL	2M	CLIP-IN
CVR-C-T	TRANSPARENT	2M	CLIP-IN

DIFFUSERS
B C

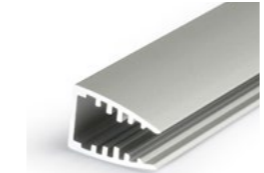


MAX LED STRIP WIDTH
14mm

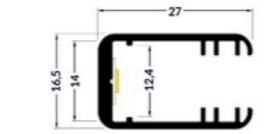


GLASS PROFILE

GL1 - GLASS PROFILE		
PART CODE	FINISH	LENGTH
GL1-A	ANODISED	2M

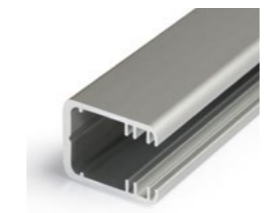


MAX LED STRIP WIDTH
8mm

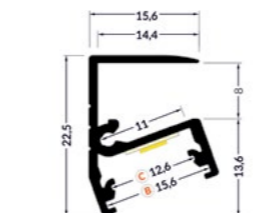


GLASS PROFILE

GL2 - GLASS PROFILE		
PART CODE	FINISH	LENGTH
GL2-A	ANODISED	2M



MAX LED STRIP WIDTH
14mm



GLASS PROFILE

GL3 - GLASS/SHELF PROFILE			
PART CODE	FINISH	LENGTH	
GL3-A	ANODISED	2M	
GL3-R	RAW	2M	
GL3-W	WHITE	2M	
GL3-B	BLACK	2M	
DIFFUSER COVERS	FINISH	LENGTH	TYPE
CVR-B-O	OPAL	2M	SLIDE-IN
CVR-B-F	FROSTED	2M	SLIDE-IN
CVR-B-T	TRANSPARENT	2M	SLIDE-IN
CVR-C-O	OPAL	2M	CLIP-IN
CVR-C-T	TRANSPARENT	2M	CLIP-IN

DIFFUSERS
B C



MAX LED STRIP WIDTH
10mm



INTEGRITY
LIGHTING SOLUTIONS

8 Cross Street,
Syston,
Leicester
LE7 2JG

(+44) 0116 260 3947

www.integrity.lighting

sales@integrity.lighting